

**LPGAT1 Antibody (aa49-198)**  
**Rabbit Polyclonal Antibody**  
**Catalog # ALS16381****Specification**

---

**LPGAT1 Antibody (aa49-198) - Product Information**

Application	WB, IHC
Primary Accession	<a href="#">Q92604</a>
Reactivity	Human
Host	Rabbit
Clonality	Polyclonal
Calculated MW	43kDa KDa

**LPGAT1 Antibody (aa49-198) - Additional Information****Gene ID** 9926**Other Names**

Acyl-CoA:lysophosphatidylglycerol acyltransferase 1, 2.3.1.-, LPGAT1, FAM34A, KIAA0205

**Target/Specificity**

Human LPGAT1.

**Reconstitution & Storage**

Store at -20°C for up to one year.

**Precautions**

LPGAT1 Antibody (aa49-198) is for research use only and not for use in diagnostic or therapeutic procedures.

**LPGAT1 Antibody (aa49-198) - Protein Information****Name** LPGAT1 ([HGNC:28985](#))**Function**

Lysophospholipid acyltransferase involved in fatty acyl chain remodeling of glycerophospholipids in the endoplasmic reticulum membrane (By similarity). Selectively catalyzes the transfer and esterification of saturated long-chain fatty acids from acyl-CoA to the sn-1 position of 1-lyso-2-acyl phosphatidylethanolamines (1-lyso-PE, LPE), with a preference for stearoyl CoA over palmitoyl CoA as acyl donor (PubMed:<a href="http://www.uniprot.org/citations/36049524" target="\_blank">36049524</a>). Acts in concert with an unknown phospholipase A1 to convert palmitate phosphatidylethanolamine (PE) species into stearate ones. Provides substrates to the PE methylation pathway, controlling stearate/palmitate composition of PE and phosphatidylcholine (PC) species with an overall impact on de novo hepatic lipid synthesis, body fat content and life span (By similarity). Can acylate lysophosphatidylglycerols (LPG) using various saturated fatty acyl-CoAs as acyl donors (PubMed:<a href="http://www.uniprot.org/citations/15485873" target="\_blank">15485873</a>). Can also acylate monoacylglycerols with a preference for 2-monoacylglycerols over 1-monoacylglycerols (By similarity). Has no activity toward

lysophosphatidic acids (LPA) (By similarity).

#### Cellular Location

Endoplasmic reticulum membrane; Multi-pass membrane protein

#### Tissue Location

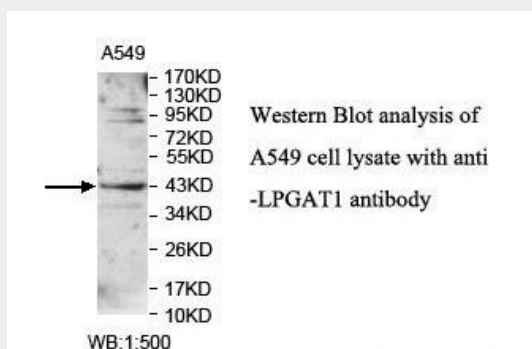
Highly expressed in liver and placenta. Also expressed in peripheral blood, lung, kidney and brain. Detected at lower levels in colon. High expression is detected in brain and testis

### LPGAT1 Antibody (aa49-198) - Protocols

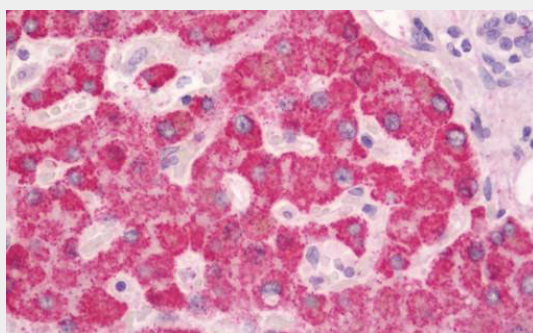
Provided below are standard protocols that you may find useful for product applications.

- [Western Blot](#)
- [Blocking Peptides](#)
- [Dot Blot](#)
- [Immunohistochemistry](#)
- [Immunofluorescence](#)
- [Immunoprecipitation](#)
- [Flow Cytometry](#)
- [Cell Culture](#)

### LPGAT1 Antibody (aa49-198) - Images



0



Human Liver: Formalin-Fixed, Paraffin-Embedded (FFPE)

### LPGAT1 Antibody (aa49-198) - Background

Lysophosphatidylglycerol (LPG) specific acyltransferase that recognizes various acyl-CoAs and LPGs as substrates but demonstrates a clear preference for long chain saturated fatty acyl-CoAs and oleoyl-CoA as acyl donors. Prefers oleoyl-LPG over palmitoyl-LPG as an acyl receptor and oleoyl-CoA

over lauroyl-CoA as an acyl donor.

#### **LPGAT1 Antibody (aa49-198) - References**

Yang Y.,et al.J. Biol. Chem. 279:55866-55874(2004).

Ji D.,et al.Submitted (FEB-2004) to the EMBL/GenBank/DDBJ databases.

Nagase T.,et al.DNA Res. 3:321-329(1996).

Mural R.J.,et al.Submitted (SEP-2005) to the EMBL/GenBank/DDBJ databases.