

XRG8 / XKR8 Antibody (C-Terminus)
Rabbit Polyclonal Antibody
Catalog # ALS16428**Specification**

XRG8 / XKR8 Antibody (C-Terminus) - Product Information

Application	IF
Primary Accession	O9H6D3
Reactivity	Human
Host	Rabbit
Clonality	Polyclonal
Calculated MW	45kDa KDa

XRG8 / XKR8 Antibody (C-Terminus) - Additional Information**Gene ID** 55113**Other Names**

XK-related protein 8, hXkr8, XK-related protein 8, processed form, XKR8, XRG8

Target/Specificity

XKR8 antibody is human reactive. At least two isoforms are known to exist; this antibody will detect both isoforms.

Reconstitution & Storage

Long term: -20°C; Short term: +4°C. Avoid repeat freeze-thaw cycles.

Precautions

XRG8 / XKR8 Antibody (C-Terminus) is for research use only and not for use in diagnostic or therapeutic procedures.

XRG8 / XKR8 Antibody (C-Terminus) - Protein Information**Name** XKR8 {ECO:0000303|PubMed:23845944, ECO:0000312|HGNC:HGNC:25508}**Function**

[XK-related protein 8, processed form]: Phospholipid scramblase that promotes phosphatidylserine exposure on apoptotic cell surface (PubMed:23845944, PubMed:25231987). Phosphatidylserine is a specific marker only present at the surface of apoptotic cells and acts as a specific signal for engulfment (PubMed:23845944). Required for the clearance of apoptotic cells, such as engulfment of apoptotic germ cells by Sertoli cells, clearance of senescent neutrophils or regulation of bipolar cell numbers in the retina (By similarity). Has no effect on calcium-induced exposure of phosphatidylserine (PubMed:23845944). Promotes myoblast differentiation and survival (PubMed:28881496).

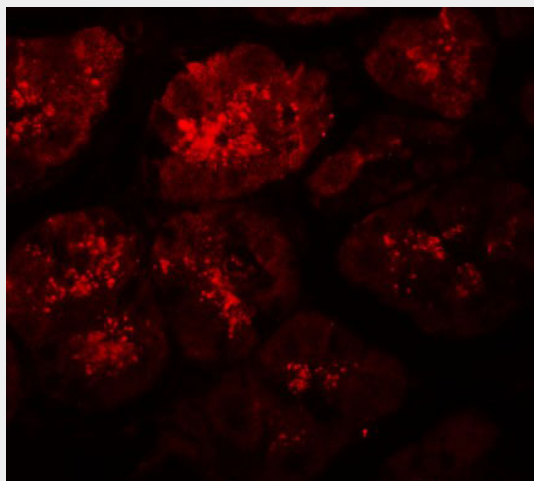
Cellular Location

Cell membrane; Multi-pass membrane protein. Cytoplasm, perinuclear region

XRG8 / XKR8 Antibody (C-Terminus) - Protocols

Provided below are standard protocols that you may find useful for product applications.

- [Western Blot](#)
- [Blocking Peptides](#)
- [Dot Blot](#)
- [Immunohistochemistry](#)
- [Immunofluorescence](#)
- [Immunoprecipitation](#)
- [Flow Cytometry](#)
- [Cell Culture](#)

XRG8 / XKR8 Antibody (C-Terminus) - Images

Immunofluorescence of XKR8 in human stomach tissue with XKR8 antibody at 20 ug/ml.

XRG8 / XKR8 Antibody (C-Terminus) - Background

Promotes phosphatidylserine exposure on apoptotic cell surface, possibly by mediating phospholipid scrambling. Phosphatidylserine is a specific marker only present at the surface of apoptotic cells and acts as a specific signal for engulfment. Has no effect on calcium-induced exposure of phosphatidylserine. Activated upon caspase cleavage, suggesting that it does not act prior the onset of apoptosis.

XRG8 / XKR8 Antibody (C-Terminus) - References

Huang C.-H., et al. Submitted (JAN-2004) to the EMBL/GenBank/DDBJ databases.
Ota T., et al. Nat. Genet. 36:40-45(2004).
Gregory S.G., et al. Nature 441:315-321(2006).
Mayya V., et al. Sci. Signal. 2:RA46-RA46(2009).
Suzuki J., et al. Science 341:403-406(2013).