

**VCL / Vinculin Antibody (Internal)**  
**Rabbit Polyclonal Antibody**  
**Catalog # ALS16433****Specification**

---

**VCL / Vinculin Antibody (Internal) - Product Information**

Application	IHC
Primary Accession	<a href="#">P18206</a>
Reactivity	Human, Mouse, Rat
Host	Rabbit
Clonality	Polyclonal
Calculated MW	124kDa KDa

**VCL / Vinculin Antibody (Internal) - Additional Information****Gene ID** 7414**Other Names**

Vinculin, Metavinculin, MV, VCL

**Target/Specificity**

Vinculin antibody is human, mouse and rat reactive. At least three isoforms of Vinculin are known to exist.

**Reconstitution & Storage**

Long term: -20°C; Short term: +4°C. Avoid repeat freeze-thaw cycles.

**Precautions**

VCL / Vinculin Antibody (Internal) is for research use only and not for use in diagnostic or therapeutic procedures.

**VCL / Vinculin Antibody (Internal) - Protein Information****Name** VCL**Function**

Actin filament (F-actin)-binding protein involved in cell- matrix adhesion and cell-cell adhesion. Regulates cell-surface E- cadherin expression and potentiates mechanosensing by the E-cadherin complex. May also play important roles in cell morphology and locomotion.

**Cellular Location**

Cell membrane {ECO:0000250|UniProtKB:P12003}; Peripheral membrane protein {ECO:0000250|UniProtKB:P12003}; Cytoplasmic side {ECO:0000250|UniProtKB:P12003}. Cell junction, adherens junction {ECO:0000250|UniProtKB:P12003}. Cell junction, focal adhesion {ECO:0000250|UniProtKB:P12003}. Cytoplasm, cytoskeleton {ECO:0000250|UniProtKB:P85972}. Cell membrane, sarcolemma {ECO:0000250|UniProtKB:Q64727}; Peripheral membrane protein {ECO:0000250|UniProtKB:Q64727}; Cytoplasmic side {ECO:0000250|UniProtKB:Q64727}. Cell projection, podosome {ECO:0000250|UniProtKB:Q64727}. Note=Recruitment to cell-cell junctions

occurs in a myosin II-dependent manner. Interaction with CTNNB1 is necessary for its localization to the cell-cell junctions {ECO:0000250|UniProtKB:P12003}

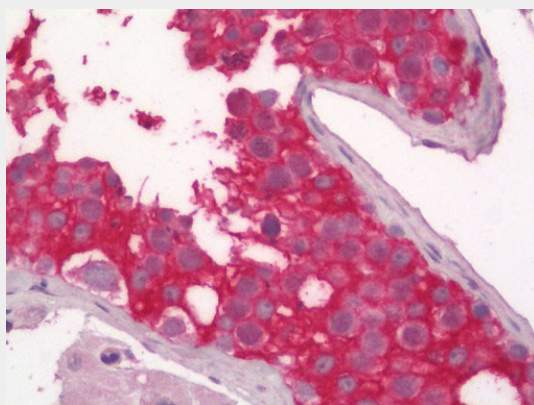
**Tissue Location**

Metavinculin is muscle-specific.

**VCL / Vinculin Antibody (Internal) - Protocols**

Provided below are standard protocols that you may find useful for product applications.

- [Western Blot](#)
- [Blocking Peptides](#)
- [Dot Blot](#)
- [Immunohistochemistry](#)
- [Immunofluorescence](#)
- [Immunoprecipitation](#)
- [Flow Cytometry](#)
- [Cell Culture](#)

**VCL / Vinculin Antibody (Internal) - Images**

Human Testis: Formalin-Fixed, Paraffin-Embedded (FFPE)

**VCL / Vinculin Antibody (Internal) - Background**

Actin filament (F-actin)-binding protein involved in cell-matrix adhesion and cell-cell adhesion. Regulates cell- surface E-cadherin expression and potentiates mechanosensing by the E-cadherin complex. May also play important roles in cell morphology and locomotion.

**VCL / Vinculin Antibody (Internal) - References**

Weller P.A.,et al.Proc. Natl. Acad. Sci. U.S.A. 87:5667-5671(1990).  
Bechtel S.,et al.BMC Genomics 8:399-399(2007).  
Deloukas P.,et al.Nature 429:375-381(2004).  
Moiseyeva E.P.,et al.J. Biol. Chem. 268:4318-4325(1993).  
Lubec G.,et al.Submitted (DEC-2008) to UniProtKB.