

PDCL3 Antibody (C-Terminus)
Rabbit Polyclonal Antibody
Catalog # ALS16439**Specification**

PDCL3 Antibody (C-Terminus) - Product Information

Application	IHC, IF
Primary Accession	O9H2J4
Reactivity	Human, Mouse, Rat
Host	Rabbit
Clonality	Polyclonal
Calculated MW	28kDa KDa

PDCL3 Antibody (C-Terminus) - Additional Information**Gene ID** 79031**Other Names**

Phosducin-like protein 3, HTPHLP, PhPL3, Viral IAP-associated factor 1, VIAF-1, PDCL3, PhLP2A, VIAF1

Target/Specificity

PDCL3 antibody is human, mouse and rat reactive. PDCL3 antibody is predicted to not cross-react with other members of the PDCL protein family.

Reconstitution & Storage

Long term: -20°C; Short term: +4°C. Avoid repeat freeze-thaw cycles.

Precautions

PDCL3 Antibody (C-Terminus) is for research use only and not for use in diagnostic or therapeutic procedures.

PDCL3 Antibody (C-Terminus) - Protein Information**Name** PDCL3**Synonyms** PhLP2A, VIAF1**Function**

Acts as a chaperone for the angiogenic VEGF receptor KDR/VEGFR2, increasing its abundance by inhibiting its ubiquitination and degradation (PubMed:23792958, PubMed:26059764). Inhibits the folding activity of the chaperonin-containing T-complex (CCT) which leads to inhibition of cytoskeletal actin folding (PubMed:17429077). Acts as a chaperone during heat shock alongside HSP90 and HSP40/70 chaperone complexes (By similarity). Modulates the activation of caspases during apoptosis (PubMed:15371430)

target="_blank">15371430).

Cellular Location

Cytoplasm. Cytoplasm, perinuclear region. Endoplasmic reticulum

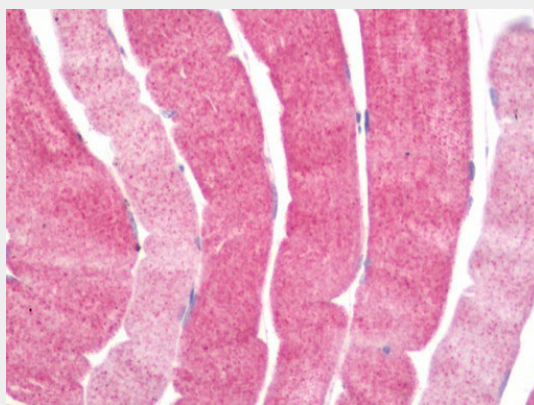
Tissue Location

Expressed in endothelial cells (at protein level) (PubMed:26059764). Expressed in all tissues examined including spleen, thymus, prostate, testis, ovary, small intestine and colon (PubMed:15371430).

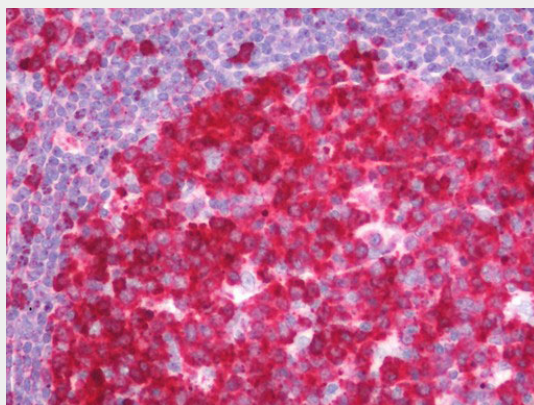
PDCL3 Antibody (C-Terminus) - Protocols

Provided below are standard protocols that you may find useful for product applications.

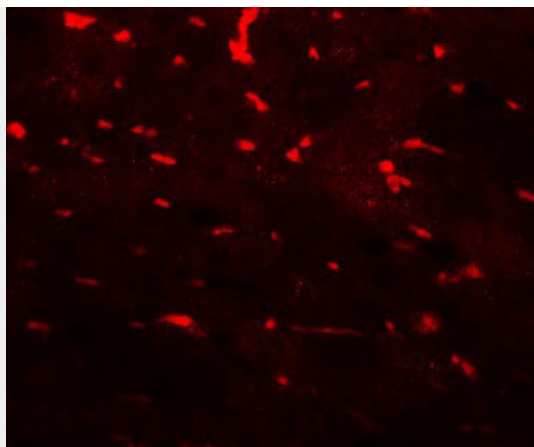
- [Western Blot](#)
- [Blocking Peptides](#)
- [Dot Blot](#)
- [Immunohistochemistry](#)
- [Immunofluorescence](#)
- [Immunoprecipitation](#)
- [Flow Cytometry](#)
- [Cell Culture](#)

PDCL3 Antibody (C-Terminus) - Images

Human Skeletal Muscle: Formalin-Fixed, Paraffin-Embedded (FFPE)



Human Tonsil: Formalin-Fixed, Paraffin-Embedded (FFPE)



Immunofluorescence of PDCL3 in mouse liver tissue with PDCL3 antibody at 20 ug/mL.

PDCL3 Antibody (C-Terminus) - Background

Acts as a chaperone for the angiogenic VEGF receptor KDR/VEGFR2, controlling its abundance and inhibiting its ubiquitination and degradation. Modulates the activation of caspases during apoptosis. Is a substrate for *Orgyia pseudotsugata* multicapsid polyhedrosis virus (OpMNPV) IAP-mediated ubiquitination.

PDCL3 Antibody (C-Terminus) - References

- Wilkinson J.C.,et al.J. Biol. Chem. 279:51091-51099(2004).
- Xu X.,et al.Submitted (MAY-2000) to the EMBL/GenBank/DDBJ databases.
- Ota T.,et al.Nat. Genet. 36:40-45(2004).
- Hillier L.W.,et al.Nature 434:724-731(2005).
- Mural R.J.,et al.Submitted (SEP-2005) to the EMBL/GenBank/DDBJ databases.