

**SKIL / SNO / SnoN Antibody (clone 2F6)**  
**Mouse Monoclonal Antibody**  
**Catalog # ALS16452****Specification**

---

**SKIL / SNO / SnoN Antibody (clone 2F6) - Product Information**

|                   |                                |
|-------------------|--------------------------------|
| Application       | WB, IHC                        |
| Primary Accession | <a href="#">P12757</a>         |
| Reactivity        | Human, Mouse, Rat, Monkey, Dog |
| Host              | Mouse                          |
| Clonality         | Monoclonal                     |
| Calculated MW     | 77kDa KDa                      |

**SKIL / SNO / SnoN Antibody (clone 2F6) - Additional Information****Gene ID** 6498**Other Names**

Ski-like protein, Ski-related oncogene, Ski-related protein, SKIL, SNO

**Target/Specificity**

Human SKIL / SNO / SnoN

**Reconstitution & Storage**

Store at -20°C. Minimize freezing and thawing.

**Precautions**

SKIL / SNO / SnoN Antibody (clone 2F6) is for research use only and not for use in diagnostic or therapeutic procedures.

**SKIL / SNO / SnoN Antibody (clone 2F6) - Protein Information****Name** SKIL**Synonyms** SNO**Function**

May have regulatory role in cell division or differentiation in response to extracellular signals.

**Tissue Location**

Isoform SNOA and isoform SNOB are widely expressed. Highest expression is found in skeletal muscle, followed by placenta and lung. Lowest expression in heart, brain and pancreas. Isoform SNOI expression is restricted to skeletal muscle

**Volume**

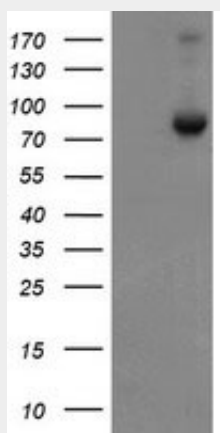
50 µl

## SKIL / SNO / SnoN Antibody (clone 2F6) - Protocols

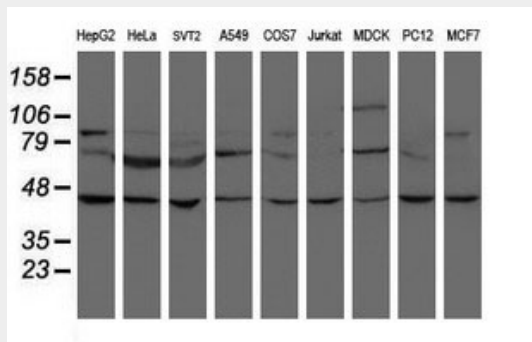
Provided below are standard protocols that you may find useful for product applications.

- [Western Blot](#)
- [Blocking Peptides](#)
- [Dot Blot](#)
- [Immunohistochemistry](#)
- [Immunofluorescence](#)
- [Immunoprecipitation](#)
- [Flow Cytometry](#)
- [Cell Culture](#)

## SKIL / SNO / SnoN Antibody (clone 2F6) - Images



HEK293T cells were transfected with the pCMV6-ENTRY control (Left lane) or pCMV6-ENTRY SKIL...



Western blot of extracts (35 ug) from 9 different cell lines by using anti-SKIL monoclonal...



Human Skeletal Muscle: Formalin-Fixed, Paraffin-Embedded (FFPE)

**SKIL / SNO / SnoN Antibody (clone 2F6) - Background**

May have regulatory role in cell division or differentiation in response to extracellular signals.

**SKIL / SNO / SnoN Antibody (clone 2F6) - References**

Nomura N.,et al.Nucleic Acids Res. 17:5489-5500(1989).  
Pearson-White S.H.,et al.Nucleic Acids Res. 25:2930-2937(1997).  
Ota T.,et al.Nat. Genet. 36:40-45(2004).  
Muzny D.M.,et al.Nature 440:1194-1198(2006).  
Pearson-White S.,et al.Nucleic Acids Res. 21:4632-4638(1993).