

C2CD3 Antibody (Internal)
Rabbit Polyclonal Antibody
Catalog # ALS16457**Specification**

C2CD3 Antibody (Internal) - Product Information

Application	IHC
Primary Accession	Q4AC94
Reactivity	Human, Mouse, Rat
Host	Rabbit
Clonality	Polyclonal
Calculated MW	260kDa KDa

C2CD3 Antibody (Internal) - Additional Information**Gene ID** 26005**Other Names**

C2 domain-containing protein 3, C2CD3

Target/Specificity

C2CD3 antibody is human, mouse and rat reactive.

Reconstitution & Storage

Long term: -20°C; Short term: +4°C. Avoid repeat freeze-thaw cycles.

Precautions

C2CD3 Antibody (Internal) is for research use only and not for use in diagnostic or therapeutic procedures.

C2CD3 Antibody (Internal) - Protein Information**Name** C2CD3**Function**

Component of the centrioles that acts as a positive regulator of centriole elongation (PubMed:24997988). Promotes assembly of centriolar distal appendage, a structure at the distal end of the mother centriole that acts as an anchor of the cilium, and is required for recruitment of centriolar distal appendages proteins CEP83, SCLT1, CEP89, FBF1 and CEP164. Not required for centriolar satellite integrity or RAB8 activation. Required for primary cilium formation (PubMed:23769972). Required for sonic hedgehog/SHH signaling and for proteolytic processing of GLI3.

Cellular Location

Cytoplasm, cytoskeleton, cilium basal body. Cytoplasm, cytoskeleton, microtubule organizing center, centrosome, centriole. Note=Localizes to centrioles and procentrioles both in interphase and mitosis. Localizes to centriolar satellites, localization is dependent on PCM1 and

dynein-mediated retrograde transport. Also localizes to the distal ends of the mother and daughter centrioles

C2CD3 Antibody (Internal) - Protocols

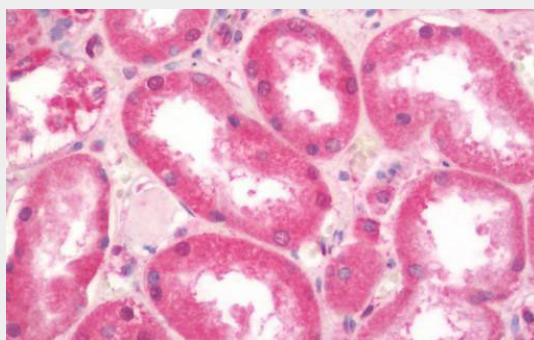
Provided below are standard protocols that you may find useful for product applications.

- [Western Blot](#)
- [Blocking Peptides](#)
- [Dot Blot](#)
- [Immunohistochemistry](#)
- [Immunofluorescence](#)
- [Immunoprecipitation](#)
- [Flow Cytometry](#)
- [Cell Culture](#)

C2CD3 Antibody (Internal) - Images



Human Colon: Formalin-Fixed, Paraffin-Embedded (FFPE)



Human Kidney: Formalin-Fixed, Paraffin-Embedded (FFPE)

C2CD3 Antibody (Internal) - Background

Component of the centrioles that acts as a positive regulator of centriole elongation (PubMed:24997988). Promotes assembly of centriolar distal appendage, a structure at the distal end of the mother centriole that acts as an anchor of the cilium, and is required for recruitment of centriolar distal appendages proteins CEP83, SCLT1, CEP89, FBF1 and CEP164. Not required for centriolar satellite integrity or RAB8 activation. Required for primary cilium formation (PubMed:23769972). Required for sonic hedgehog/SHH signaling and for proteolytic processing of GLI3.

C2CD3 Antibody (Internal) - References

Totoki Y.,et al.Submitted (AUG-2005) to the EMBL/GenBank/DDBJ databases.
Taylor T.D.,et al.Nature 440:497-500(2006).
Ota T.,et al.Nat. Genet. 36:40-45(2004).
Bechtel S.,et al.BMC Genomics 8:399-399(2007).
Liu T.,et al.J. Proteome Res. 4:2070-2080(2005).