

PACS2 Antibody (Internal)
Rabbit Polyclonal Antibody
Catalog # ALS16458**Specification**

PACS2 Antibody (Internal) - Product Information

| | |
|-------------------|------------------------|
| Application | IHC |
| Primary Accession | Q86VP3 |
| Reactivity | Human, Mouse, Rat |
| Host | Rabbit |
| Clonality | Polyclonal |
| Calculated MW | 98kDa KDa |

PACS2 Antibody (Internal) - Additional Information**Gene ID** 23241**Other Names**

Phosphofurin acidic cluster sorting protein 2, PACS-2, PACS1-like protein, PACS2, KIAA0602, PACS1L

Target/Specificity

PACS2 antibody is human, mouse and rat reactive. At least three isoforms of PACS2 are known to exist; this antibody will detect all three. PACS2 antibody is predicted to not cross-react with PACS1.

Reconstitution & Storage

Long term: -20°C; Short term: +4°C. Avoid repeat freeze-thaw cycles.

Precautions

PACS2 Antibody (Internal) is for research use only and not for use in diagnostic or therapeutic procedures.

PACS2 Antibody (Internal) - Protein Information**Name** PACS2 ([HGNC:23794](#))**Synonyms** KIAA0602, PACS1L**Function**

Multifunctional sorting protein that controls the endoplasmic reticulum (ER)-mitochondria communication, including the apposition of mitochondria with the ER and ER homeostasis. In addition, in response to apoptotic inducer, translocates BIB to mitochondria, which initiates a sequence of events including the formation of mitochondrial truncated BID, the release of cytochrome c, the activation of caspase-3 thereby causing cell death. May also be involved in ion channel trafficking, directing acidic cluster-containing ion channels to distinct subcellular compartments.

Cellular Location

Endoplasmic reticulum. Mitochondrion

Tissue Location

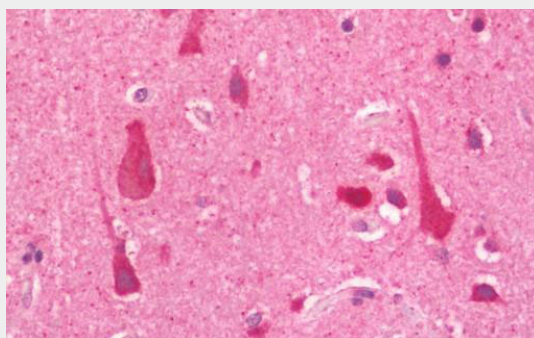
Broadly expressed, with greatest levels in skeletal muscle followed by heart, brain, pancreas and testis

PACS2 Antibody (Internal) - Protocols

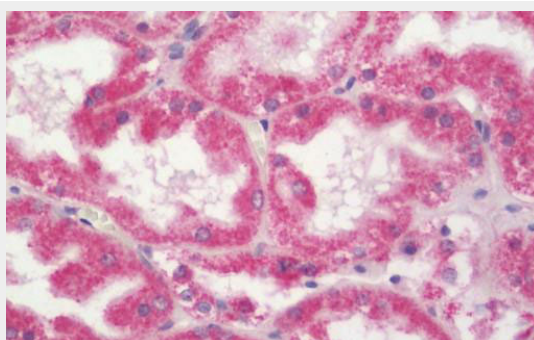
Provided below are standard protocols that you may find useful for product applications.

- [Western Blot](#)
- [Blocking Peptides](#)
- [Dot Blot](#)
- [Immunohistochemistry](#)
- [Immunofluorescence](#)
- [Immunoprecipitation](#)
- [Flow Cytometry](#)
- [Cell Culture](#)

PACS2 Antibody (Internal) - Images



Human Brain, Cortex: Formalin-Fixed, Paraffin-Embedded (FFPE)



Human Kidney: Formalin-Fixed, Paraffin-Embedded (FFPE)

PACS2 Antibody (Internal) - Background

Multifunctional sorting protein that controls the endoplasmic reticulum (ER)-mitochondria communication, including the apposition of mitochondria with the ER and ER homeostasis. In addition, in response to apoptotic inducer, translocates BIB to mitochondria, which initiates a sequence of events including the formation of mitochondrial truncated BID, the release of cytochrome c, the activation of caspase-3 thereby causing cell death. May also be involved in ion channel trafficking, directing acidic cluster-containing ion channels to distinct subcellular

compartments.

PACS2 Antibody (Internal) - References

Simmen T.,et al.EMBO J. 24:717-729(2005).

Xiang Y.,et al.Submitted (AUG-2007) to the EMBL/GenBank/DDBJ databases.

Nagase T.,et al.DNA Res. 5:31-39(1998).

Heilig R.,et al.Nature 421:601-607(2003).

Koettgen M.,et al.EMBO J. 24:705-716(2005).