

Aspartate Aminotransferase Antibody
Rabbit Polyclonal Antibody
Catalog # ALS16487**Specification**

Aspartate Aminotransferase Antibody - Product Information

Application	IHC
Primary Accession	P17174
Reactivity	Human
Host	Rabbit
Clonality	Polyclonal
Calculated MW	46kDa KDa

Aspartate Aminotransferase Antibody - Additional Information**Gene ID** 2805**Other Names**

Aspartate aminotransferase, cytoplasmic, cAspAT, 2.6.1.1, 2.6.1.3, Cysteine aminotransferase, cytoplasmic, Cysteine transaminase, cytoplasmic, cCAT, Glutamate oxaloacetate transaminase 1, Transaminase A, GOT1

Target/Specificity

Human Aspartate Aminotransferase.

Reconstitution & Storage

Long term: -20°C; Short term: +4°C. Avoid repeat freeze-thaw cycles.

Precautions

Aspartate Aminotransferase Antibody is for research use only and not for use in diagnostic or therapeutic procedures.

Aspartate Aminotransferase Antibody - Protein Information**Name** GOT1 ([HGNC:4432](#))**Function**

Biosynthesis of L-glutamate from L-aspartate or L-cysteine (PubMed:21900944). Important regulator of levels of glutamate, the major excitatory neurotransmitter of the vertebrate central nervous system. Acts as a scavenger of glutamate in brain neuroprotection. The aspartate aminotransferase activity is involved in hepatic glucose synthesis during development and in adipocyte glyceroneogenesis. Using L-cysteine as substrate, regulates levels of mercaptopyruvate, an important source of hydrogen sulfide. Mercaptopyruvate is converted into H₂S via the action of 3-mercaptopyruvate sulfurtransferase (3MST). Hydrogen sulfide is an important synaptic modulator and neuroprotectant in the brain. In addition, catalyzes (2S)-2- aminobutanoate, a by-product in the cysteine biosynthesis pathway (PubMed:27827456).

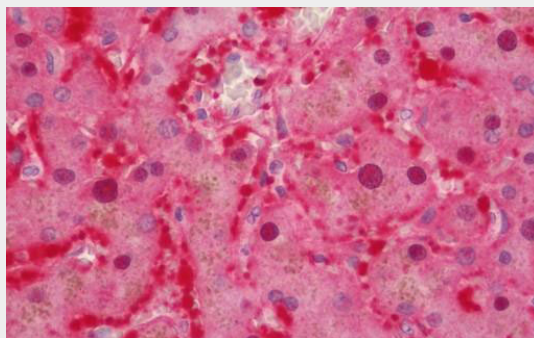
Cellular Location

Cytoplasm.

Aspartate Aminotransferase Antibody - Protocols

Provided below are standard protocols that you may find useful for product applications.

- [Western Blot](#)
- [Blocking Peptides](#)
- [Dot Blot](#)
- [Immunohistochemistry](#)
- [Immunofluorescence](#)
- [Immunoprecipitation](#)
- [Flow Cytometry](#)
- [Cell Culture](#)

Aspartate Aminotransferase Antibody - Images

Human Liver: Formalin-Fixed, Paraffin-Embedded (FFPE)

Aspartate Aminotransferase Antibody - Background

Biosynthesis of L-glutamate from L-aspartate or L- cysteine. Important regulator of levels of glutamate, the major excitatory neurotransmitter of the vertebrate central nervous system. Acts as a scavenger of glutamate in brain neuroprotection. The aspartate aminotransferase activity is involved in hepatic glucose synthesis during development and in adipocyte glyceroneogenesis. Using L-cysteine as substrate, regulates levels of mercaptopyruvate, an important source of hydrogen sulfide. Mercaptopyruvate is converted into H₂S via the action of 3- mercaptopyruvate sulfurtransferase (3MST). Hydrogen sulfide is an important synaptic modulator and neuroprotectant in the brain.