

**PTHLH / PTHRP Antibody**  
**Rabbit Polyclonal Antibody**  
**Catalog # ALS16492****Specification**

---

**PTHLH / PTHRP Antibody - Product Information**

Application	WB, IHC
Primary Accession	<a href="#">P12272</a>
Reactivity	Human, Mouse, Rat
Host	Rabbit
Clonality	Polyclonal
Calculated MW	20kDa KDa

**PTHLH / PTHRP Antibody - Additional Information****Gene ID** 5744**Other Names**

Parathyroid hormone-related protein, PTH-rP, PTHrP, Parathyroid hormone-like protein, PLP, PTHrP[1-36], PTHrP[38-94], Osteostatin, PTHrP[107-139], PTHLH, PTHRP

**Target/Specificity**

Human PTHLH / PTHRP

**Reconstitution & Storage**

Long term: -80°C; Short term: -20°C. Avoid freeze-thaw cycles.

**Precautions**

PTHLH / PTHRP Antibody is for research use only and not for use in diagnostic or therapeutic procedures.

**PTHLH / PTHRP Antibody - Protein Information****Name** PTHLH**Synonyms** PTHRP**Function**

Neuroendocrine peptide which is a critical regulator of cellular and organ growth, development, migration, differentiation and survival and of epithelial calcium ion transport. Regulates endochondral bone development and epithelial-mesenchymal interactions during the formation of the mammary glands and teeth. Required for skeletal homeostasis. Promotes mammary mesenchyme differentiation and bud outgrowth by modulating mesenchymal cell responsiveness to BMPs. Up-regulates BMPRI1A expression in the mammary mesenchyme and this increases the sensitivity of these cells to BMPs and allows them to respond to BMP4 in a paracrine and/or autocrine fashion. BMP4 signaling in the mesenchyme, in turn, triggers epithelial outgrowth and augments MSX2 expression, which causes the mammary mesenchyme to inhibit hair follicle formation within the nipple sheath (By similarity). Promotes colon cancer cell migration and

invasion in an integrin alpha-6/beta-1- dependent manner through activation of Rac1.

**Cellular Location**

Cytoplasm. Nucleus. Secreted.

**Tissue Location**

Ubiquitous. Also expressed in the mammary gland.

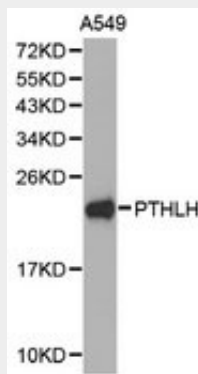
**Volume**

50  $\mu$ l

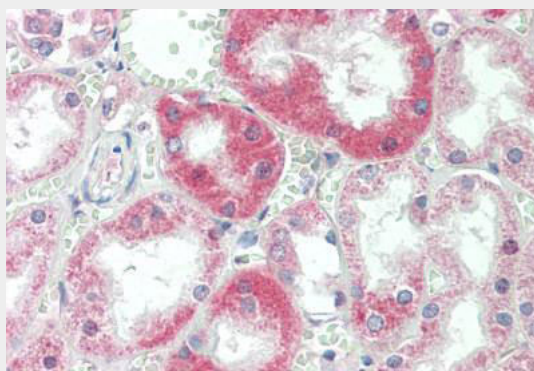
**PTHLH / PTHRP Antibody - Protocols**

Provided below are standard protocols that you may find useful for product applications.

- [Western Blot](#)
- [Blocking Peptides](#)
- [Dot Blot](#)
- [Immunohistochemistry](#)
- [Immunofluorescence](#)
- [Immunoprecipitation](#)
- [Flow Cytometry](#)
- [Cell Culture](#)

**PTHLH / PTHRP Antibody - Images**

Western blot analysis of extracts of A549 cell lines, using PTHLH antibody.



Human Kidney: Formalin-Fixed, Paraffin-Embedded (FFPE)

**PTHLH / PTHRP Antibody - Background**

Neuroendocrine peptide which is a critical regulator of cellular and organ growth, development, migration, differentiation and survival and of epithelial calcium ion transport. Regulates endochondral bone development and epithelial-mesenchymal interactions during the formation of the mammary glands and teeth. Required for skeletal homeostasis. Promotes mammary mesenchyme differentiation and bud outgrowth by modulating mesenchymal cell responsiveness to BMPs. Upregulates BMPR1A expression in the mammary mesenchyme and this increases the sensitivity of these cells to BMPs and allows them to respond to BMP4 in a paracrine and/or autocrine fashion. BMP4 signaling in the mesenchyme, in turn, triggers epithelial outgrowth and augments MSX2 expression, which causes the mammary mesenchyme to inhibit hair follicle formation within the nipple sheath (By similarity). Promotes colon cancer cell migration and invasion in an integrin alpha-6/beta-1- dependent manner through activation of Rac1.