

BPIFB1 Antibody (clone 2A5)
Mouse Monoclonal Antibody
Catalog # ALS16507**Specification**

BPIFB1 Antibody (clone 2A5) - Product Information

Application	IF, IHC
Primary Accession	Q8TDL5
Reactivity	Human
Host	Mouse
Clonality	Monoclonal
Calculated MW	52kDa KDa

BPIFB1 Antibody (clone 2A5) - Additional Information**Gene ID** 92747**Other Names**

BPI fold-containing family B member 1, Long palate, lung and nasal epithelium carcinoma-associated protein 1, Von Ebner minor salivary gland protein, VEMSGP, BPIFB1, C20orf114, LPLUNC1

Target/Specificity

Human BPIFB1

Reconstitution & Storage

Long term: -20°C; Short term: +4°C; Avoid freeze-thaw cycles.

Precautions

BPIFB1 Antibody (clone 2A5) is for research use only and not for use in diagnostic or therapeutic procedures.

BPIFB1 Antibody (clone 2A5) - Protein Information**Name** BPIFB1**Synonyms** C20orf114, LPLUNC1**Function**

May play a role in innate immunity in mouth, nose and lungs. Binds bacterial lipopolysaccharide (LPS) and modulates the cellular responses to LPS.

Cellular Location

Secreted.

Tissue Location

Detected in duodenum mucosal crypts of cholera patients, near Paneth cells (at protein level).
Detected in trachea, nasal septal epithelium and lung.

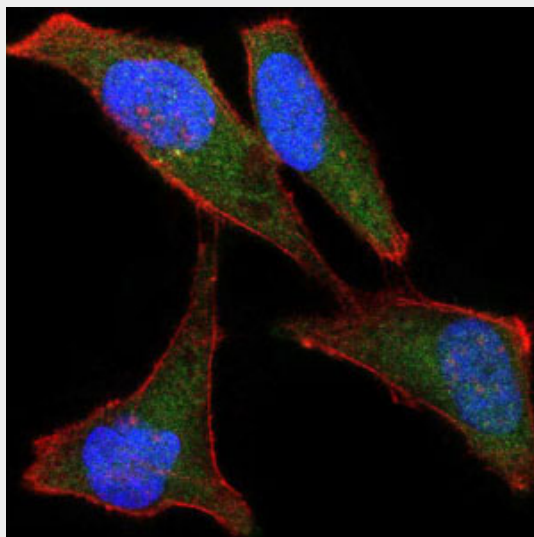
Volume
100 µl

BPIFB1 Antibody (clone 2A5) - Protocols

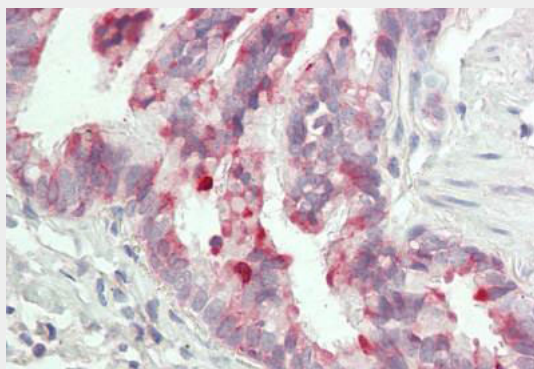
Provided below are standard protocols that you may find useful for product applications.

- [Western Blot](#)
- [Blocking Peptides](#)
- [Dot Blot](#)
- [Immunohistochemistry](#)
- [Immunofluorescence](#)
- [Immunoprecipitation](#)
- [Flow Cytometry](#)
- [Cell Culture](#)

BPIFB1 Antibody (clone 2A5) - Images



Immunofluorescence of HeLa cells using LPlunc1 mouse monoclonal antibody (green).



Human Lung, Respiratory Epithelium: Formalin-Fixed, Paraffin-Embedded (FFPE)

BPIFB1 Antibody (clone 2A5) - Background

May play a role in innate immunity in mouth, nose and lungs. Binds bacterial lipopolysaccharide

(LPS) and modulates the cellular responses to LPS.