

**RAB27A / RAB27 Antibody (C-Terminus)**  
**Goat Polyclonal Antibody**  
**Catalog # ALS16508****Specification**

---

**RAB27A / RAB27 Antibody (C-Terminus) - Product Information**

Application	WB, IHC
Primary Accession	<a href="#">P51159</a>
Reactivity	Human, Mouse, Rat, Monkey, Dog
Host	Goat
Clonality	Polyclonal
Calculated MW	25kDa KDa

**RAB27A / RAB27 Antibody (C-Terminus) - Additional Information****Gene ID** 5873**Other Names**

Ras-related protein Rab-27A, Rab-27, GTP-binding protein Ram, RAB27A, RAB27

**Target/Specificity**

Detects Rab27a by Western blot in the following human, rat and mouse whole cell lysates and transfected cells with GFP-Rab27a. This antibody is specific for Rab27a. It does not recognise Rab27b protein.

**Reconstitution & Storage**

Store at 4°C short term. Aliquot and store at -20°C long term. Avoid freeze-thaw cycles.

**Precautions**

RAB27A / RAB27 Antibody (C-Terminus) is for research use only and not for use in diagnostic or therapeutic procedures.

**RAB27A / RAB27 Antibody (C-Terminus) - Protein Information****Name** RAB27A**Synonyms** RAB27**Function**

Small GTPase which cycles between active GTP-bound and inactive GDP-bound states. In its active state, binds to a variety of effector proteins to regulate homeostasis of late endocytic pathway, including endosomal positioning, maturation and secretion (PubMed:<a href="http://www.uniprot.org/citations/30771381" target="\_blank">30771381</a>). Plays a role in cytotoxic granule exocytosis in lymphocytes. Required for both granule maturation and granule docking and priming at the immunologic synapse.

**Cellular Location**

Membrane; Lipid-anchor. Melanosome. Late endosome. Lysosome. Note=Identified by mass

spectrometry in melanosome fractions from stage I to stage IV (PubMed:12643545, PubMed:17081065). Localizes to endosomal exocytic vesicles (PubMed:17237785).

#### Tissue Location

Found in all the examined tissues except in brain. Low expression was found in thymus, kidney, muscle and placenta Detected in melanocytes, and in most tumor cell lines examined Expressed in cytotoxic T-lymphocytes (CTL) and mast cells

#### Volume

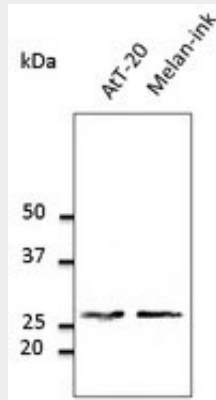
100  $\mu$ l

### RAB27A / RAB27 Antibody (C-Terminus) - Protocols

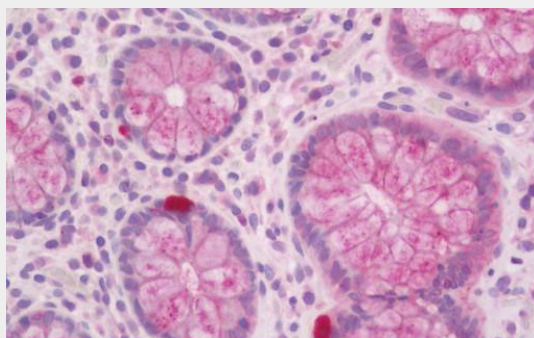
Provided below are standard protocols that you may find useful for product applications.

- [Western Blot](#)
- [Blocking Peptides](#)
- [Dot Blot](#)
- [Immunohistochemistry](#)
- [Immunofluorescence](#)
- [Immunoprecipitation](#)
- [Flow Cytometry](#)
- [Cell Culture](#)

### RAB27A / RAB27 Antibody (C-Terminus) - Images



Western blot.



Human Colon: Formalin-Fixed, Paraffin-Embedded (FFPE)



Human Prostate: Formalin-Fixed, Paraffin-Embedded (FFPE)

**RAB27A / RAB27 Antibody (C-Terminus) - Background**

Plays a role in cytotoxic granule exocytosis in lymphocytes. Required for both granule maturation and granule docking and priming at the immunologic synapse.