

**Muscle Actin Antibody (clone HHF35)**  
**Mouse Monoclonal Antibody**  
**Catalog # ALS16527****Specification**

---

**Muscle Actin Antibody (clone HHF35) - Product Information**

Application	IHC
Reactivity	Human, Rat, Rabbit, Zebrafish, Monkey, Pig, Chicken
Host	Mouse
Clonality	Monoclonal
Isotype	IgG1

**Muscle Actin Antibody (clone HHF35) - Additional Information****Target/Specificity**

Reacts with both alpha-muscle and gamma-smooth muscle actin, and therefore reacts with skeletal muscle, cardiac muscle, vascular and visceral smooth muscle cells, pericytes and myoepithelial cells. It is also reactive in myofibroblasts. It does not r ...

**Reconstitution & Storage**

PBS containing 0.09% sodium azide. +4°C, avoid freezing

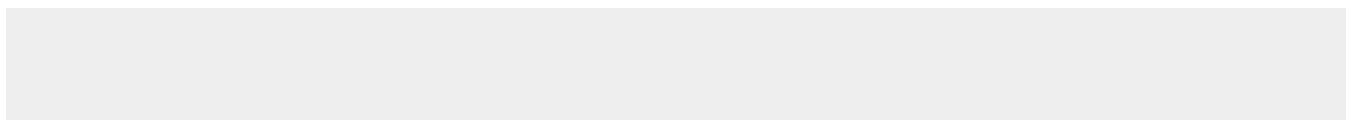
**Precautions**

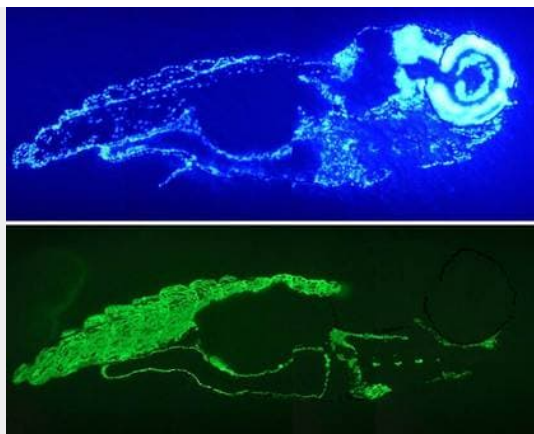
Muscle Actin Antibody (clone HHF35) is for research use only and not for use in diagnostic or therapeutic procedures.

**Muscle Actin Antibody (clone HHF35) - Protein Information****Muscle Actin Antibody (clone HHF35) - Protocols**

Provided below are standard protocols that you may find useful for product applications.

- [Western Blot](#)
- [Blocking Peptides](#)
- [Dot Blot](#)
- [Immunohistochemistry](#)
- [Immunofluorescence](#)
- [Immunoprecipitation](#)
- [Flow Cytometry](#)
- [Cell Culture](#)

**Muscle Actin Antibody (clone HHF35) - Images**



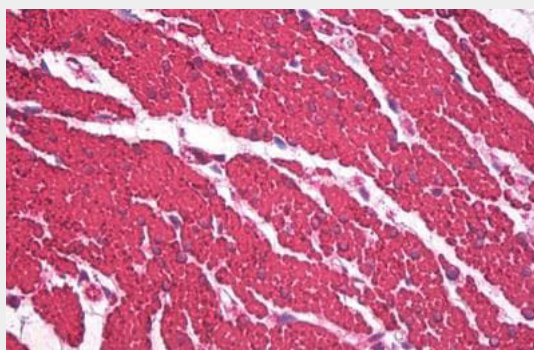
Immunofluorescence staining of muscle tissue of 7 days old zebrafish embryo.



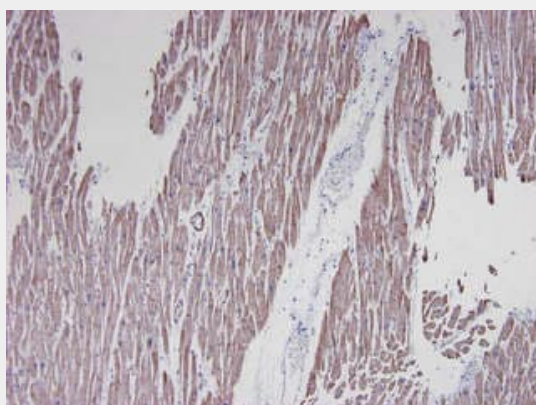
Immunofluorescence staining of intestinal muscle tissue in 1 month old zebrafish embryo



Immunofluorescence staining of muscle tissue in the tail of 3 days old zebrafish embryo



Anti-Muscle Actin antibody IHC staining of human colon, smooth muscle.



Paraffin section of human cardiac muscle immunostained with HHF35 (1:250)