

KSR2 Antibody (Ile694)
Rabbit Polyclonal Antibody
Catalog # ALS16559**Specification**

KSR2 Antibody (Ile694) - Product Information

Application	IHC, WB
Primary Accession	Q6VAB6
Other Accession	283455
Reactivity	Human, Mouse
Host	Rabbit
Clonality	Polyclonal
Calculated MW	107632

KSR2 Antibody (Ile694) - Additional Information**Gene ID** 283455**Other Names**

KSR2, Kinase suppressor of ras 2, HKSR2

Target/Specificity

Human KSR2

Reconstitution & Storage

PBS, pH 7.2, 0.05% sodium azide. Store at 4°C short term. Aliquot and store at -20°C long term. Avoid freeze-thaw cycles.

Precautions

KSR2 Antibody (Ile694) is for research use only and not for use in diagnostic or therapeutic procedures.

KSR2 Antibody (Ile694) - Protein Information**Name** KSR2 ([HGNC:18610](#))**Function**

Location-regulated scaffold connecting MEK to RAF. Has very low protein kinase activity and can phosphorylate MAP2K1 at several Ser and Thr residues with very low efficiency (in vitro). Acts as MAP2K1/MEK1-dependent allosteric activator of BRAF; upon binding to MAP2K1/MEK1, dimerizes with BRAF and promotes BRAF-mediated phosphorylation of MAP2K1/MEK1 (PubMed:29433126). Interaction with BRAF enhances KSR2-mediated phosphorylation of MAP2K1 (in vitro). Blocks MAP3K8 kinase activity and MAP3K8-mediated signaling. Acts as a negative regulator of MAP3K3-mediated activation of ERK, JNK and NF- kappa-B pathways, inhibiting MAP3K3-mediated interleukin-8 production.

Cellular Location

Cytoplasm. Membrane; Peripheral membrane protein

Tissue Location

Mainly expressed in brain and kidney.

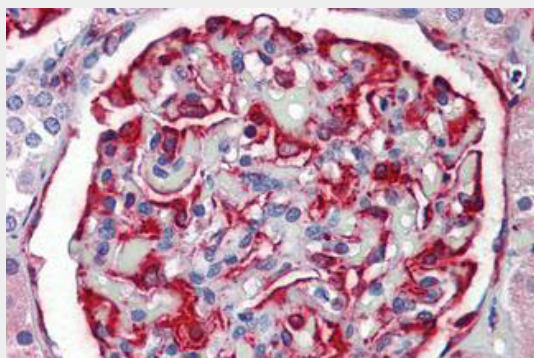
Volume

50 μ l

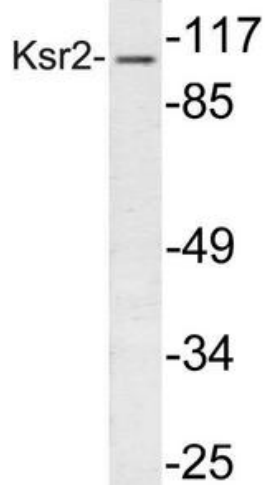
KSR2 Antibody (Ile694) - Protocols

Provided below are standard protocols that you may find useful for product applications.

- [Western Blot](#)
- [Blocking Peptides](#)
- [Dot Blot](#)
- [Immunohistochemistry](#)
- [Immunofluorescence](#)
- [Immunoprecipitation](#)
- [Flow Cytometry](#)
- [Cell Culture](#)

KSR2 Antibody (Ile694) - Images

Anti-KSR2 antibody IHC staining of human kidney.



Western blot analysis of Ksr2 (I694)antibody in extracts from 293 cells.

KSR2 Antibody (Ile694) - Background

Location-regulated scaffold connecting MEK to RAF. Has very low protein kinase activity and can phosphorylate MAP2K1 at several Ser and Thr residues with very low efficiency (in vitro). Interaction with BRAF enhances KSR2-mediated phosphorylation of MAP2K1 (in vitro). Blocks MAP3K8 kinase activity and MAP3K8- mediated signaling. Acts as a negative regulator of MAP3K3- mediated activation of ERK, JNK and NF-kappa-B pathways, inhibiting MAP3K3-mediated interleukin-8 production.

KSR2 Antibody (Ile694) - References

Ota T.,et al.Nat. Genet. 36:40-45(2004).
Scherer S.E.,et al.Nature 440:346-351(2006).
Channavajhala P.L.,et al.J. Biol. Chem. 278:47089-47097(2003).
Channavajhala P.L.,et al.Biochem. Biophys. Res. Commun. 334:1214-1218(2005).
Brennan D.F.,et al.Nature 472:366-369(2011).