

CALR / Calreticulin Antibody
Rabbit Polyclonal Antibody
Catalog # ALS16566**Specification**

CALR / Calreticulin Antibody - Product Information

Application	IHC, IF, WB
Primary Accession	P27797
Other Accession	811
Reactivity	Human, Mouse, Rat, Rabbit, Hamster, Monkey, Pig, Chicken, Sheep, Bovine, Guinea Pig, Dog
Host	Rabbit
Clonality	Polyclonal
Calculated MW	48142

CALR / Calreticulin Antibody - Additional Information**Gene ID** 811**Other Names**

CALR, Calregulin, CC1qR, CRP55, CRT, CRTC, ERp60, Grp60, RO, SSA, Calreticulin, HACBP

Target/Specificity

Detects ~63 kD protein.

Reconstitution & Storage

Antiserum. Store at -20°C.

Precautions

CALR / Calreticulin Antibody is for research use only and not for use in diagnostic or therapeutic procedures.

CALR / Calreticulin Antibody - Protein Information**Name** CALR ([HGNC:1455](#))**Synonyms** CRTC**Function**

Calcium-binding chaperone that promotes folding, oligomeric assembly and quality control in the endoplasmic reticulum (ER) via the calreticulin/calnexin cycle. This lectin interacts transiently with almost all of the monoglucosylated glycoproteins that are synthesized in the ER (PubMed:7876246). Interacts with the DNA-binding domain of NR3C1 and mediates its nuclear export (PubMed:11149926). Involved in maternal gene expression regulation. May participate in oocyte maturation via the regulation of calcium homeostasis (By similarity). Present in the cortical granules of non-activated oocytes, is

exocytosed during the cortical reaction in response to oocyte activation and might participate in the block to polyspermy (By similarity).

Cellular Location

Endoplasmic reticulum lumen. Cytoplasm, cytosol. Secreted, extracellular space, extracellular matrix. Cell surface. Sarcoplasmic reticulum lumen {ECO:0000250|UniProtKB:P28491}. Cytoplasmic vesicle, secretory vesicle, Cortical granule {ECO:0000250|UniProtKB:Q8K3H7}. Cytolytic granule. Note=Also found in cell surface (T cells), cytosol and extracellular matrix (PubMed:10358038). During oocyte maturation and after parthenogenetic activation accumulates in cortical granules. In pronuclear and early cleaved embryos localizes weakly to cytoplasm around nucleus and more strongly in the region near the cortex (By similarity). In cortical granules of non-activated oocytes, is exocytosed during the cortical reaction in response to oocyte activation (By similarity). {ECO:0000250|UniProtKB:P28491, ECO:0000250|UniProtKB:Q8K3H7, ECO:0000269|PubMed:8418194}

Volume

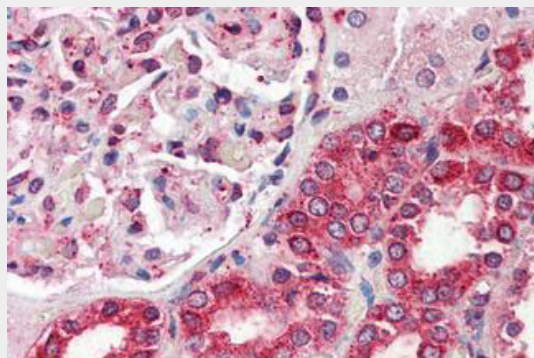
50 µl

CALR / Calreticulin Antibody - Protocols

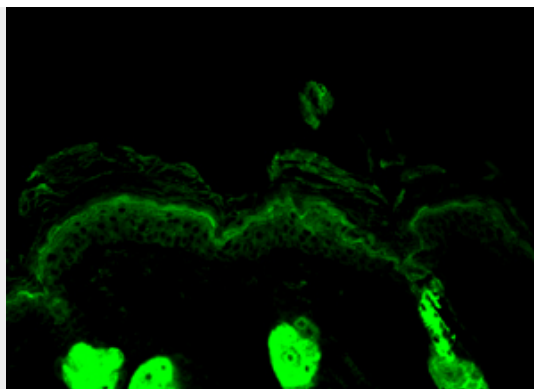
Provided below are standard protocols that you may find useful for product applications.

- [Western Blot](#)
- [Blocking Peptides](#)
- [Dot Blot](#)
- [Immunohistochemistry](#)
- [Immunofluorescence](#)
- [Immunoprecipitation](#)
- [Flow Cytometry](#)
- [Cell Culture](#)

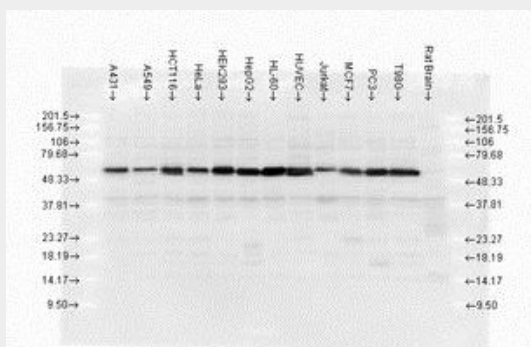
CALR / Calreticulin Antibody - Images



Anti-CALR / Calreticulin antibody IHC staining of human kidney.



Calreticulin, Mouse back skin.



Western blot analysis of Calreticulin in various cell lysates, using a 1:1000 dilution of...

CALR / Calreticulin Antibody - Background

Calcium-binding chaperone that promotes folding, oligomeric assembly and quality control in the endoplasmic reticulum (ER) via the calreticulin/calnexin cycle. This lectin interacts transiently with almost all of the monoglucosylated glycoproteins that are synthesized in the ER. Interacts with the DNA-binding domain of NR3C1 and mediates its nuclear export. Involved in maternal gene expression regulation. May participate in oocyte maturation via the regulation of calcium homeostasis (By similarity).

CALR / Calreticulin Antibody - References

- McCauliffe D.P.,et al.J. Clin. Invest. 85:1379-1391(1990).
- Rokeach L.A.,et al.J. Immunol. 147:3031-3039(1991).
- McCauliffe D.P.,et al.J. Biol. Chem. 267:2557-2562(1992).
- Liu J.,et al.Submitted (JUL-2001) to the EMBL/GenBank/DDBJ databases.
- Goshima N.,et al.Nat. Methods 5:1011-1017(2008).