

A1CF / ACF Antibody
Rabbit Polyclonal Antibody
Catalog # ALS16569**Specification**

A1CF / ACF Antibody - Product Information

| | |
|-------------------|------------------------|
| Application | IHC |
| Primary Accession | O9NQ94 |
| Other Accession | 29974 |
| Reactivity | Human |
| Host | Rabbit |
| Clonality | Polyclonal |
| Calculated MW | 65202 |

A1CF / ACF Antibody - Additional Information**Gene ID** 29974**Other Names**

A1CF, ACF65, ACF64, APOBEC-1 stimulating protein, APOBEC1 complementation factor, APOBEC1CF, ACF, Apo-B RNA editing protein, APOBEC1-stimulating protein, RP11-564C4.2, ASP

Reconstitution & Storage

PBS, pH 7.4, 0.02% sodium azide. Store at -20°C for up to one year.

Precautions

A1CF / ACF Antibody is for research use only and not for use in diagnostic or therapeutic procedures.

A1CF / ACF Antibody - Protein Information**Name** A1CF**Synonyms** ACF, ASP {ECO:0000312|EMBL:CAB94754.1}**Function**

Essential component of the apolipoprotein B mRNA editing enzyme complex which is responsible for the postranscriptional editing of a CAA codon for Gln to a UAA codon for stop in APOB mRNA. Binds to APOB mRNA and is probably responsible for docking the catalytic subunit, APOBEC1, to the mRNA to allow it to deaminate its target cytosine. The complex also protects the edited APOB mRNA from nonsense- mediated decay.

Cellular Location

Nucleus. Endoplasmic reticulum Cytoplasm. Note=Predominantly nuclear where it localizes to heterochromatin. Also cytoplasmic where it is found at the outer surface of the endoplasmic reticulum (By similarity). Shuttles between the nucleus and cytoplasm. May be transported into the nucleus by the nuclear import protein TNPO2/TRN2 or by APOBEC1.

Tissue Location

Widely expressed with highest levels in brain, liver, pancreas, colon and spleen.

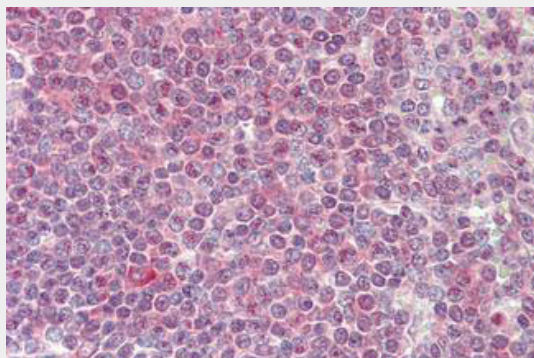
Volume

50 µl

A1CF / ACF Antibody - Protocols

Provided below are standard protocols that you may find useful for product applications.

- [Western Blot](#)
- [Blocking Peptides](#)
- [Dot Blot](#)
- [Immunohistochemistry](#)
- [Immunofluorescence](#)
- [Immunoprecipitation](#)
- [Flow Cytometry](#)
- [Cell Culture](#)

A1CF / ACF Antibody - Images

Anti-A1CF / ACF antibody IHC staining of human spleen.

A1CF / ACF Antibody - Background

Essential component of the apolipoprotein B mRNA editing enzyme complex which is responsible for the postranscriptional editing of a CAA codon for Gln to a UAA codon for stop in APOB mRNA. Binds to APOB mRNA and is probably responsible for docking the catalytic subunit, APOBEC1, to the mRNA to allow it to deaminate its target cytosine. The complex also protects the edited APOB mRNA from nonsense-mediated decay.

A1CF / ACF Antibody - References

Lellek H., et al. J. Biol. Chem. 275:19848-19856(2000).
Mehta A., et al. Mol. Cell. Biol. 20:1846-1854(2000).
Sowden M.P., et al. Submitted (MAY-2000) to the EMBL/GenBank/DDBJ databases.
Ota T., et al. Nat. Genet. 36:40-45(2004).
Deloukas P., et al. Nature 429:375-381(2004).