

CDX2 Antibody (C-Terminus)
Rabbit Polyclonal Antibody
Catalog # ALS16590**Specification**

CDX2 Antibody (C-Terminus) - Product Information

Application	IHC, IF, WB
Primary Accession	Q99626
Other Accession	1045
Reactivity	Human, Mouse, Rat
Host	Rabbit
Clonality	Polyclonal
Calculated MW	33520

CDX2 Antibody (C-Terminus) - Additional Information**Gene ID** 1045**Other Names**

CDX2, Caudal-type homeobox protein 2, CDX3, Homeobox protein CDX-2, Caudal type homeobox 2, CDX-3

Target/Specificity

Human CDX2

Reconstitution & Storage

PBS, 0.02% sodium azide. Short term 4°C, long term aliquot and store at -20°C, avoid freeze thaw cycles. Store undiluted.

Precautions

CDX2 Antibody (C-Terminus) is for research use only and not for use in diagnostic or therapeutic procedures.

CDX2 Antibody (C-Terminus) - Protein Information**Name** CDX2**Synonyms** CDX3**Function**

Transcription factor which regulates the transcription of multiple genes expressed in the intestinal epithelium (By similarity). Binds to the promoter of the intestinal sucrase-isomaltase SI and activates SI transcription (By similarity). Binds to the DNA sequence 5'-ATAAAACTTAT-3' in the promoter region of VDR and activates VDR transcription (By similarity). Binds to and activates transcription of LPH (By similarity). Activates transcription of CLDN2 and intestinal mucin MUC2 (By similarity). Binds to the 5'-AATTTTACACCT-3' DNA sequence in the promoter region of CA1 and activates CA1 transcription (By similarity). Important in broad range of functions from early differentiation to maintenance of the intestinal epithelial lining of both the small and large

intestine. Binds preferentially to methylated DNA (PubMed:28473536).

Cellular Location

Nucleus {ECO:0000250|UniProtKB:P43241}.

Tissue Location

Detected in small intestine, colon and pancreas.

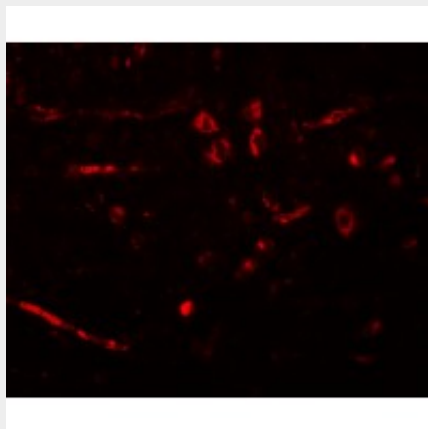
CDX2 Antibody (C-Terminus) - Protocols

Provided below are standard protocols that you may find useful for product applications.

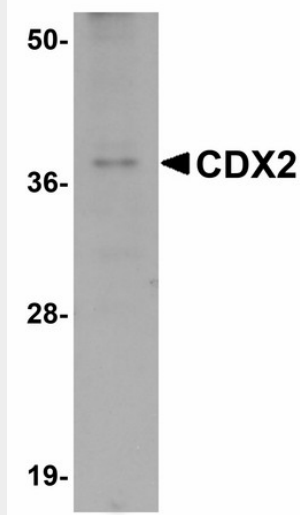
- [Western Blot](#)
- [Blocking Peptides](#)
- [Dot Blot](#)
- [Immunohistochemistry](#)
- [Immunofluorescence](#)
- [Immunoprecipitation](#)
- [Flow Cytometry](#)
- [Cell Culture](#)

CDX2 Antibody (C-Terminus) - Images

Anti-CDX2 antibody IHC staining of human small intestine.



Immunofluorescence of CDX2 in rat brain tissue with CDX2 antibody at 20 ug/ml



Western blot analysis of CDX2 in mouse brain tissue lysate with CDX2 antibody at 1 µg/mL.

CDX2 Antibody (C-Terminus) - Background

Involved in the transcriptional regulation of multiple genes expressed in the intestinal epithelium. Important in broad range of functions from early differentiation to maintenance of the intestinal epithelial lining of both the small and large intestine.

CDX2 Antibody (C-Terminus) - References

Drummond F.J., et al. Ann. Hum. Genet. 61:393-400(1997).
Mallo G.V., et al. Int. J. Cancer 74:35-44(1997).
Sivagnanasundaram S., et al. Br. J. Cancer 84:218-225(2001).
Tanizawa Y., et al. Submitted (JUN-1997) to the EMBL/GenBank/DDBJ databases.
Dunham A., et al. Nature 428:522-528(2004).