

GJA1 / CX43 / Connexin 43 Antibody (C-Terminus)
Goat Polyclonal Antibody
Catalog # ALS16651**Specification**

GJA1 / CX43 / Connexin 43 Antibody (C-Terminus) - Product Information

Application	IHC, IF, WB
Primary Accession	P17302
Other Accession	2697
Reactivity	Human, Mouse, Rat, Monkey, Dog
Host	Goat
Clonality	Polyclonal
Isotype	IgG
Calculated MW	43008

GJA1 / CX43 / Connexin 43 Antibody (C-Terminus) - Additional Information**Gene ID** 2697**Other Names**

GJA1, Connexin-43, DFNB38, Connexin 43, Gap junction alpha-1 protein, GJAL, HSS, Gap junction protein alpha 1, ODDD, ODD, AVSD3, CX43, HLHS1, ODOD, SDTY3

Target/Specificity

Detects endogenous levels of total connexin 43.

Reconstitution & Storage

PBS, 20% glycerol, 0.05% sodium azide. Store at 4°C short term. Aliquot and store at -20°C long term. Avoid freeze-thaw cycles.

Precautions

GJA1 / CX43 / Connexin 43 Antibody (C-Terminus) is for research use only and not for use in diagnostic or therapeutic procedures.

GJA1 / CX43 / Connexin 43 Antibody (C-Terminus) - Protein Information**Name** GJA1**Synonyms** GJAL**Function**

Gap junction protein that acts as a regulator of bladder capacity. A gap junction consists of a cluster of closely packed pairs of transmembrane channels, the connexons, through which materials of low MW diffuse from one cell to a neighboring cell. May play a critical role in the physiology of hearing by participating in the recycling of potassium to the cochlear endolymph. Negative regulator of bladder functional capacity: acts by enhancing intercellular electrical and chemical transmission, thus sensitizing bladder muscles to cholinergic neural stimuli and causing them to contract (By similarity). May play a role in cell growth inhibition through the regulation of

NOV expression and localization. Plays an essential role in gap junction communication in the ventricles (By similarity).

Cellular Location

Cell membrane; Multi-pass membrane protein. Cell junction, gap junction. Endoplasmic reticulum {ECO:0000250|UniProtKB:P23242}. Note=Localizes at the intercalated disk (ICD) in cardiomyocytes and the proper localization at ICD is dependent on TMEM65. {ECO:0000250|UniProtKB:P23242}

Tissue Location

Expressed in the heart and fetal cochlea.

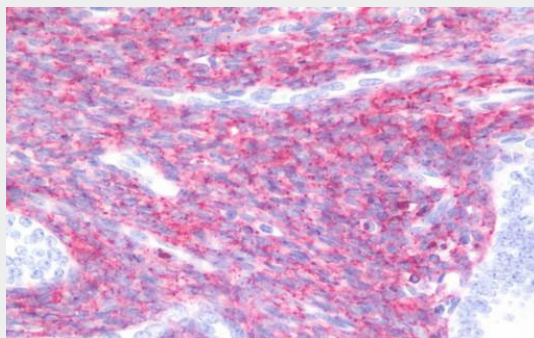
Volume

100 µl

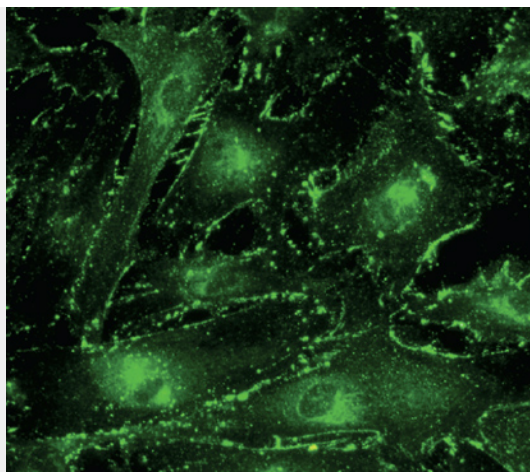
GJA1 / CX43 / Connexin 43 Antibody (C-Terminus) - Protocols

Provided below are standard protocols that you may find useful for product applications.

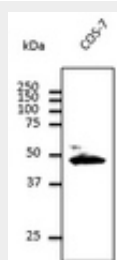
- [Western Blot](#)
- [Blocking Peptides](#)
- [Dot Blot](#)
- [Immunohistochemistry](#)
- [Immunofluorescence](#)
- [Immunoprecipitation](#)
- [Flow Cytometry](#)
- [Cell Culture](#)

GJA1 / CX43 / Connexin 43 Antibody (C-Terminus) - Images

Anti-GJA1 / CX43 / Connexin 43 antibody IHC staining of human uterus, endometrium.



Immunofluorescence. Immunostaining of primary RPE cells with CX43 antibody at 1:100 dilution.



Western blot.

GJA1 / CX43 / Connexin 43 Antibody (C-Terminus) - Background

Gap junction protein that acts as a regulator of bladder capacity. A gap junction consists of a cluster of closely packed pairs of transmembrane channels, the connexons, through which materials of low MW diffuse from one cell to a neighboring cell. May play a critical role in the physiology of hearing by participating in the recycling of potassium to the cochlear endolymph. Negative regulator of bladder functional capacity: acts by enhancing intercellular electrical and chemical transmission, thus sensitizing bladder muscles to cholinergic neural stimuli and causing them to contract (By similarity).

GJA1 / CX43 / Connexin 43 Antibody (C-Terminus) - References

- Fishman G.I.,et al.J. Cell Biol. 111:589-598(1990).
- Fishman G.I.,et al.Genomics 10:250-256(1991).
- Haefliger J.-A.,et al.Eur. Heart J. 20:1843-1843(1999).
- Halleck A.,et al.Submitted (JUN-2004) to the EMBL/GenBank/DDBJ databases.
- Ota T.,et al.Nat. Genet. 36:40-45(2004).