

JUP/CTNNG/Junction Plakoglobin Antibody
Rabbit Polyclonal Antibody
Catalog # ALS16659**Specification**

JUP/CTNNG/Junction Plakoglobin Antibody - Product Information

Application	IHC, WB
Primary Accession	P14923
Other Accession	3728
Reactivity	Human, Mouse, Rat
Host	Rabbit
Clonality	Polyclonal
Calculated MW	81745

JUP/CTNNG/Junction Plakoglobin Antibody - Additional Information**Gene ID** 3728**Other Names**

JUP, Desmoplakin-3, CTNNG, DP11, Gamma catenin, Junction plakoglobin, PKGB, ARVD12, Catenin gamma, Desmoplakin III, DP3, PDGB

Reconstitution & Storage

PBS, pH 7.2, 0.05% sodium azide. Store at 4°C short term. Aliquot and store at -20°C long term. Avoid freeze-thaw cycles.

Precautions

JUP/CTNNG/Junction Plakoglobin Antibody is for research use only and not for use in diagnostic or therapeutic procedures.

JUP/CTNNG/Junction Plakoglobin Antibody - Protein Information**Name** JUP ([HGNC:6207](#))**Function**

Common junctional plaque protein. The membrane-associated plaques are architectural elements in an important strategic position to influence the arrangement and function of both the cytoskeleton and the cells within the tissue. The presence of plakoglobin in both the desmosomes and in the intermediate junctions suggests that it plays a central role in the structure and function of submembranous plaques. Acts as a substrate for VE-PTP and is required by it to stimulate VE-cadherin function in endothelial cells. Can replace beta-catenin in E-cadherin/catenin adhesion complexes which are proposed to couple cadherins to the actin cytoskeleton (By similarity).

Cellular Location

Cell junction, adherens junction. Cell junction, desmosome. Cytoplasm, cytoskeleton. Membrane; Peripheral membrane protein. Note=Cytoplasmic in a soluble and membrane-associated form

Tissue Location

Expressed in the heart (at protein level).

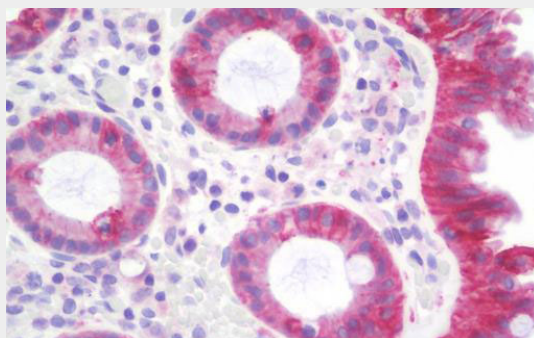
Volume
50 µl

JUP/CTNNG/Junction Plakoglobin Antibody - Protocols

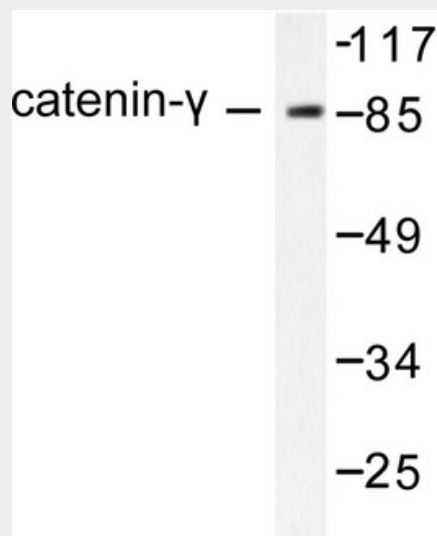
Provided below are standard protocols that you may find useful for product applications.

- [Western Blot](#)
- [Blocking Peptides](#)
- [Dot Blot](#)
- [Immunohistochemistry](#)
- [Immunofluorescence](#)
- [Immunoprecipitation](#)
- [Flow Cytometry](#)
- [Cell Culture](#)

JUP/CTNNG/Junction Plakoglobin Antibody - Images



Anti-JUP/CTNNG/Junction Plakoglobin antibody IHC staining of human colon.



Western blot of Catenin-/PLAK (731) pAb in extracts from HeLa cells.

JUP/CTNNG/Junction Plakoglobin Antibody - Background

Common junctional plaque protein. The membrane-associated plaques are architectural elements

in an important strategic position to influence the arrangement and function of both the cytoskeleton and the cells within the tissue. The presence of plakoglobin in both the desmosomes and in the intermediate junctions suggests that it plays a central role in the structure and function of submembranous plaques. Acts as a substrate for VE-PTP and is required by it to stimulate VE-cadherin function in endothelial cells. Can replace beta-catenin in E-cadherin/catenin adhesion complexes which are proposed to couple cadherins to the actin cytoskeleton (By similarity).

JUP/CTNNG/Junction Plakoglobin Antibody - References

Franke W.W., et al. Proc. Natl. Acad. Sci. U.S.A. 86:4027-4031(1989).
Zimbelmann R., et al. Submitted (DEC-1995) to the EMBL/GenBank/DDBJ databases.
Whitlock N.V., et al. Exp. Dermatol. 9:323-326(2000).
Liang X.-J., et al. Submitted (FEB-2003) to the EMBL/GenBank/DDBJ databases.
Zody M.C., et al. Nature 440:1045-1049(2006).

JUP/CTNNG/Junction Plakoglobin Antibody - Citations

- [Type II cGMP-dependent protein kinase inhibits EGF-induced JAK/STAT signaling in gastric cancer cells.](#)