

**TLK1 Antibody (aa730-779)**  
**Rabbit Polyclonal Antibody**  
**Catalog # ALS16679****Specification**

---

**TLK1 Antibody (aa730-779) - Product Information**

Application	IHC, IF
Primary Accession	<a href="#">O9UKI8</a>
Other Accession	<a href="#">9874</a>
Reactivity	Human, Mouse
Host	Rabbit
Clonality	Polyclonal
Isotype	IgG
Calculated MW	86700

**TLK1 Antibody (aa730-779) - Additional Information****Gene ID** 9874**Other Names**

TLK1, KIAA0137, Tousled-like kinase 1, Snare kinase snak, PKU-beta, SNARE protein kinase SNAK

**Target/Specificity**

TLK1 Antibody detects endogenous levels of total TLK1 protein.

**Reconstitution & Storage**PBS (without Mg<sup>2+</sup>, Ca<sup>2+</sup>), pH 7.4, 150 mM sodium chloride, 0.02% sodium azide, 50% glycerol.  
Store at -20°C for up to one year.**Precautions**

TLK1 Antibody (aa730-779) is for research use only and not for use in diagnostic or therapeutic procedures.

**TLK1 Antibody (aa730-779) - Protein Information****Name** TLK1**Synonyms** KIAA0137**Function**

Rapidly and transiently inhibited by phosphorylation following the generation of DNA double-stranded breaks during S-phase. This is cell cycle checkpoint and ATM-pathway dependent and appears to regulate processes involved in chromatin assembly. Isoform 3 phosphorylates and enhances the stability of the t-SNARE SNAP23, augmenting its assembly with syntaxin. Isoform 3 protects the cells from the ionizing radiation by facilitating the repair of DSBs. In vitro, phosphorylates histone H3 at 'Ser-10'.

**Cellular Location**

Nucleus

**Tissue Location**

Widely expressed. Present in fetal placenta, liver, kidney and pancreas but not heart or skeletal muscle. Also found in adult cell lines. Isoform 3 is ubiquitously expressed in all tissues examined.

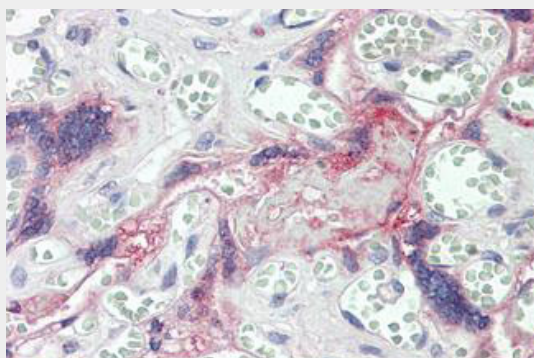
**Volume**

50  $\mu$ l

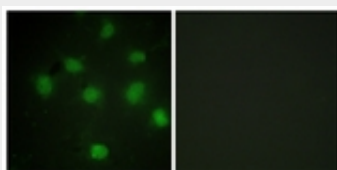
**TLK1 Antibody (aa730-779) - Protocols**

Provided below are standard protocols that you may find useful for product applications.

- [Western Blot](#)
- [Blocking Peptides](#)
- [Dot Blot](#)
- [Immunohistochemistry](#)
- [Immunofluorescence](#)
- [Immunoprecipitation](#)
- [Flow Cytometry](#)
- [Cell Culture](#)

**TLK1 Antibody (aa730-779) - Images**

Anti-TLK1 antibody IHC staining of human placenta.



Immunofluorescence of COS7 cells, using TLK1 Antibody.

**TLK1 Antibody (aa730-779) - Background**

Rapidly and transiently inhibited by phosphorylation following the generation of DNA double-stranded breaks during S- phase. This is cell cycle checkpoint and ATM-pathway dependent and appears to regulate processes involved in chromatin assembly. Isoform 3 phosphorylates and enhances the stability of the t-SNARE SNAP23, augmenting its assembly with syntaxin. Isoform 3 protects the cells from the ionizing radiation by facilitating the repair of DSBs. In vitro, phosphorylates histone H3 at 'Ser-10'.

**TLK1 Antibody (aa730-779) - References**

Yamakawa A.,et al.Gene 202:193-201(1997).  
Sillje H.H.W.,et al.EMBO J. 18:5691-5702(1999).  
Cabaniols J.-P.,et al.Mol. Biol. Cell 10:4033-4041(1999).  
Nagase T.,et al.DNA Res. 2:167-174(1995).  
Nakajima D.,et al.DNA Res. 9:99-106(2002).