

**MAPK6 / ERK3 Antibody (aa461-510)**  
**Rabbit Polyclonal Antibody**  
**Catalog # ALS16709****Specification**

---

**MAPK6 / ERK3 Antibody (aa461-510) - Product Information**

Application	IHC, IF, WB
Primary Accession	<a href="#">Q16659</a>
Other Accession	<a href="#">5597</a>
Reactivity	Human, Mouse, Rat
Host	Rabbit
Clonality	Polyclonal
Isotype	IgG
Calculated MW	82681

**MAPK6 / ERK3 Antibody (aa461-510) - Additional Information****Gene ID** 5597**Other Names**

MAPK6, ERK-3, MAP kinase 6, MAPK 6, p97-MAPK, PRKM6, MAP kinase isoform p97, ERK3, HsT17250, p97MAPK

**Target/Specificity**

p97 MAPK Antibody detects endogenous levels of total p97 MAPK protein.

**Reconstitution & Storage**PBS (without Mg<sup>2+</sup>, Ca<sup>2+</sup>), pH 7.4, 150 mM sodium chloride, 0.02% sodium azide, 50% glycerol.  
Store at -20°C for up to one year.**Precautions**

MAPK6 / ERK3 Antibody (aa461-510) is for research use only and not for use in diagnostic or therapeutic procedures.

**MAPK6 / ERK3 Antibody (aa461-510) - Protein Information****Name** MAPK6**Synonyms** ERK3, PRKM6**Function**

Atypical MAPK protein. Phosphorylates microtubule-associated protein 2 (MAP2) and MAPKAPK5. The precise role of the complex formed with MAPKAPK5 is still unclear, but the complex follows a complex set of phosphorylation events: upon interaction with atypical MAPKAPK5, ERK3/MAPK6 is phosphorylated at Ser-189 and then mediates phosphorylation and activation of MAPKAPK5, which in turn phosphorylates ERK3/MAPK6. May promote entry in the cell cycle (By similarity).

**Cellular Location**

Cytoplasm. Nucleus. Note=Translocates to the cytoplasm following interaction with MAPKAPK5

**Tissue Location**

Highest expression in the skeletal muscle, followed by the brain. Also found in heart, placenta, lung, liver, pancreas, kidney and skin fibroblasts

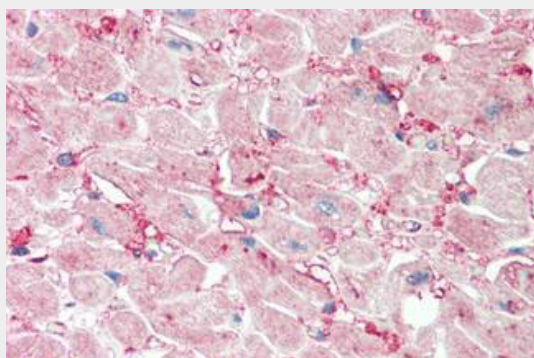
**Volume**

50 µl

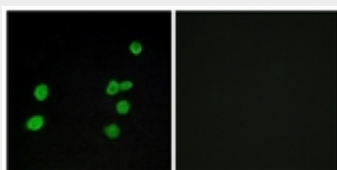
**MAPK6 / ERK3 Antibody (aa461-510) - Protocols**

Provided below are standard protocols that you may find useful for product applications.

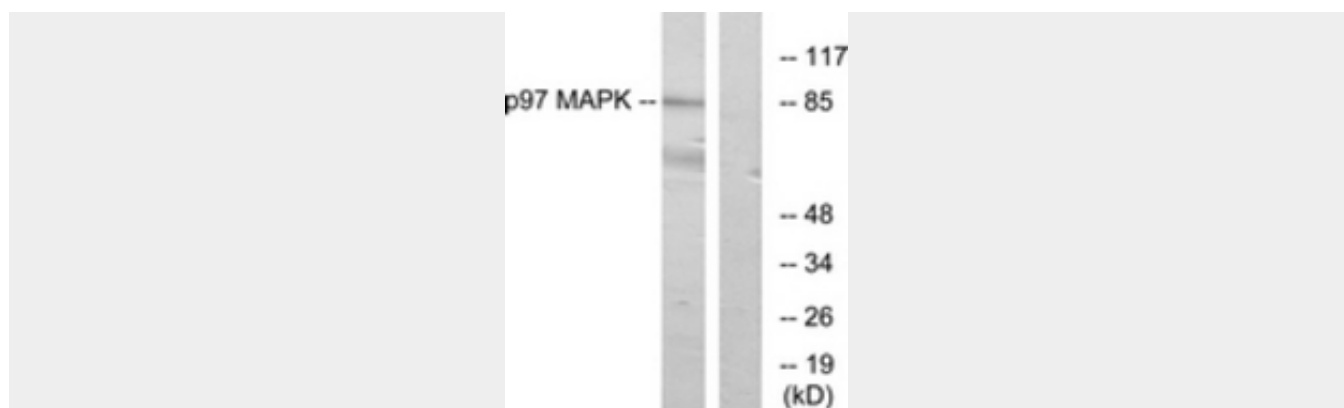
- [Western Blot](#)
- [Blocking Peptides](#)
- [Dot Blot](#)
- [Immunohistochemistry](#)
- [Immunofluorescence](#)
- [Immunoprecipitation](#)
- [Flow Cytometry](#)
- [Cell Culture](#)

**MAPK6 / ERK3 Antibody (aa461-510) - Images**

Anti-MAPK6 / ERK3 antibody IHC staining of human heart.



Immunofluorescence of MCF7 cells, using p97 MAPK Antibody.



Western blot of extracts from K562 cells, using p97 MAPK Antibody.

#### **MAPK6 / ERK3 Antibody (aa461-510) - Background**

Atypical MAPK protein. Phosphorylates microtubule-associated protein 2 (MAP2) and MAPKAPK5. The precise role of the complex formed with MAPKAPK5 is still unclear, but the complex follows a complex set of phosphorylation events: upon interaction with atypical MAPKAPK5, ERK3/MAPK6 is phosphorylated at Ser-189 and then mediates phosphorylation and activation of MAPKAPK5, which in turn phosphorylates ERK3/MAPK6. May promote entry in the cell cycle (By similarity).

#### **MAPK6 / ERK3 Antibody (aa461-510) - References**

- Zhu A.X., et al. Mol. Cell. Biol. 14:8202-8211(1994).  
Meloche S., et al. Oncogene 13:1575-1579(1996).  
Saranath D., et al. Submitted (SEP-2001) to the EMBL/GenBank/DDBJ databases.  
Ota T., et al. Nat. Genet. 36:40-45(2004).  
Bechtel S., et al. BMC Genomics 8:399-399(2007).