

**ENO2 / NSE Antibody**  
**Chicken Polyclonal Antibody**  
**Catalog # ALS16727****Specification**

---

**ENO2 / NSE Antibody - Product Information**

|                   |                        |
|-------------------|------------------------|
| Application       | IHC                    |
| Primary Accession | <a href="#">P09104</a> |
| Other Accession   | <a href="#">2026</a>   |
| Reactivity        | Human, Rat             |
| Host              | Chicken                |
| Clonality         | Polyclonal             |
| Isotype           | IgY                    |
| Calculated MW     | 47269                  |

**ENO2 / NSE Antibody - Additional Information****Gene ID** 2026**Other Names**

ENO2, Enolase 2, Enolase 2 (gamma, neuronal), Neurone-specific enolase, Gamma-enolase, Neural enolase, Neuron specific gamma enolase, Neuron-specific enolase, NSE

**Target/Specificity**

These synthetic peptides corresponded to different regions of the NSE-2 gene product, but are shared between the human (NP\_001966, NCBI) and rat (AAA41119, NCBI) sequences.

**Reconstitution & Storage**

Phosphate-buffered (10 mM) isotonic (0.9%, w/v) saline ("PBS," pH 7.2) with sodium azide (0.02%, w/v) added as a preservative. May be stored at 4°C. For long-term storage, aliquot and store at 4°C. Do not freeze. Aliquots are stable for at least 12 months. Sensitive to light.

**Precautions**

ENO2 / NSE Antibody is for research use only and not for use in diagnostic or therapeutic procedures.

**ENO2 / NSE Antibody - Protein Information****Name** ENO2**Function**

Has neurotrophic and neuroprotective properties on a broad spectrum of central nervous system (CNS) neurons. Binds, in a calcium- dependent manner, to cultured neocortical neurons and promotes cell survival (By similarity).

**Cellular Location**

Cytoplasm. Cell membrane. Note=Can translocate to the plasma membrane in either the homodimeric (alpha/alpha) or heterodimeric (alpha/gamma) form

**Tissue Location**

The alpha/alpha homodimer is expressed in embryo and in most adult tissues. The alpha/beta heterodimer and the beta/beta homodimer are found in striated muscle, and the alpha/gamma heterodimer and the gamma/gamma homodimer in neurons

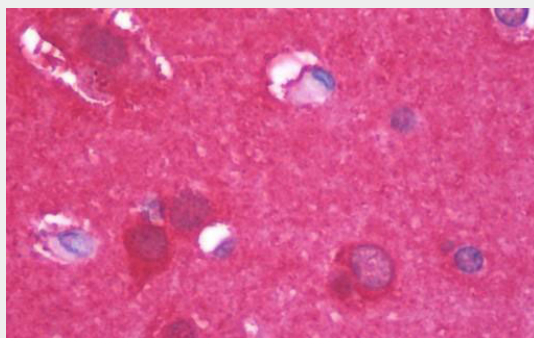
**Volume**

100 µl

**ENO2 / NSE Antibody - Protocols**

Provided below are standard protocols that you may find useful for product applications.

- [Western Blot](#)
- [Blocking Peptides](#)
- [Dot Blot](#)
- [Immunohistochemistry](#)
- [Immunofluorescence](#)
- [Immunoprecipitation](#)
- [Flow Cytometry](#)
- [Cell Culture](#)

**ENO2 / NSE Antibody - Images**

Anti-ENO2 / NSE antibody IHC staining of human brain, cortex.

**ENO2 / NSE Antibody - Background**

Has neurotrophic and neuroprotective properties on a broad spectrum of central nervous system (CNS) neurons. Binds, in a calcium-dependent manner, to cultured neocortical neurons and promotes cell survival (By similarity).

**ENO2 / NSE Antibody - References**

McAleese S.M., et al. Eur. J. Biochem. 178:413-417(1988).  
van Obberghen E., et al. J. Neurosci. Res. 19:450-456(1988).  
Oliva D., et al. Gene 79:355-360(1989).  
Oliva D., et al. Genomics 10:157-165(1991).  
Ansari-Lari M.A., et al. Genome Res. 7:268-280(1997).