

**IL36RN / IL1F5 Antibody (C-Terminus)**  
**Rabbit Polyclonal Antibody**  
**Catalog # ALS16775****Specification**

---

**IL36RN / IL1F5 Antibody (C-Terminus) - Product Information**

Application	IHC, IF, WB
Primary Accession	<a href="#">O9UBH0</a>
Other Accession	<a href="#">26525</a>
Reactivity	Human, Mouse
Host	Rabbit
Clonality	Polyclonal
Isotype	IgG
Calculated MW	16962

**IL36RN / IL1F5 Antibody (C-Terminus) - Additional Information****Gene ID** 26525**Other Names**

IL36RN, FIL1, FIL1D, IL-1 delta, IL-1 related protein 3, IL-1HY1, IL-1RP3, IL-1-related protein 3, IL1F5, IL1RP3, IL1L1, IL36RA, Interleukin-1 delta, Family of interleukin 1-delta, FIL1 delta, IL-1L1, IL-1ra homolog 1, Interleukin-1 family member 5, ...

**Target/Specificity**

IL-36RN antibody is human specific. At least two isoforms of IL-36RN are known to exist.

**Reconstitution & Storage**

PBS, 0.02% sodium azide. Long term: -20°C; Short term: +4°C. Avoid repeat freeze-thaw cycles.

**Precautions**

IL36RN / IL1F5 Antibody (C-Terminus) is for research use only and not for use in diagnostic or therapeutic procedures.

**IL36RN / IL1F5 Antibody (C-Terminus) - Protein Information****Name** IL36RN ([HGNC:15561](#))**Function**

Inhibits the activity of interleukin-36 (IL36A, IL36B and IL36G) by binding to receptor IL1RL2 and preventing its association with the coreceptor IL1RAP for signaling. Part of the IL-36 signaling system that is thought to be present in epithelial barriers and to take part in local inflammatory response; similar to the IL-1 system with which it shares the coreceptor. Proposed to play a role in skin inflammation. May be involved in the innate immune response to fungal pathogens, such as *Aspergillus fumigatus*. May activate an anti-inflammatory signaling pathway by recruiting SIGIRR.

**Cellular Location**

Cytoplasm. Secreted. Note=The secretion is dependent on protein unfolding and facilitated by the

cargo receptor TMED10; it results in protein translocation from the cytoplasm into the ERGIC (endoplasmic reticulum-Golgi intermediate compartment) followed by vesicle entry and secretion.

#### **Tissue Location**

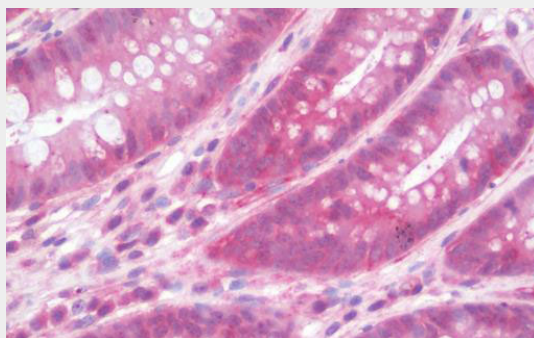
Predominantly expressed in skin keratinocytes but not in fibroblasts, endothelial cells or melanocytes. Detected also in the spleen, brain leukocyte and macrophage cell types. Increased in lesional psoriasis skin.

#### **IL36RN / IL1F5 Antibody (C-Terminus) - Protocols**

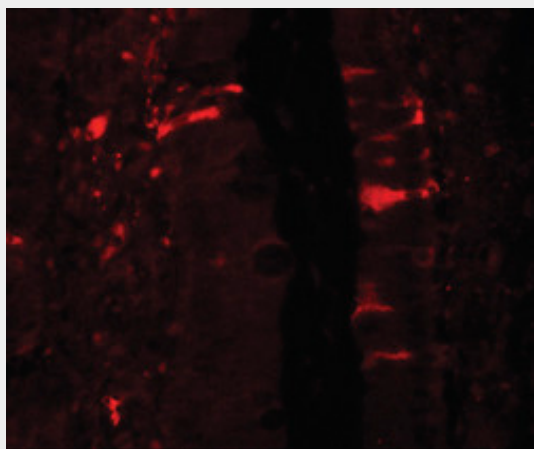
Provided below are standard protocols that you may find useful for product applications.

- [Western Blot](#)
- [Blocking Peptides](#)
- [Dot Blot](#)
- [Immunohistochemistry](#)
- [Immunofluorescence](#)
- [Immunoprecipitation](#)
- [Flow Cytometry](#)
- [Cell Culture](#)

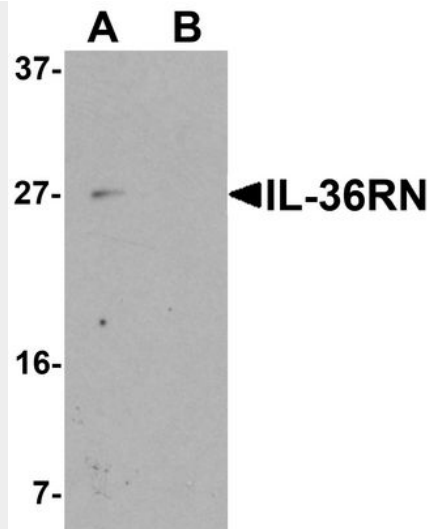
#### **IL36RN / IL1F5 Antibody (C-Terminus) - Images**



Anti-IL36RN / IL1F5 antibody IHC staining of human colon.



Immunofluorescence of IL-36RN in rat small intestine tissue with IL-36RN antibody at 20 ug/ml.



Western blot analysis of IL-36RN in 3T3 cell lysate with IL-36RN antibody at 1 ug/ml in (A) the...

#### **IL36RN / IL1F5 Antibody (C-Terminus) - Background**

Inhibits the activity of interleukin-36 (IL36A, IL36B and IL36G) by binding to receptor IL1RL2 and preventing its association with the coreceptor IL1RAP for signaling. Part of the IL-36 signaling system that is thought to be present in epithelial barriers and to take part in local inflammatory response; similar to the IL-1 system with which it shares the coreceptor. Proposed to play a role in skin inflammation. May be involved in the innate immune response to fungal pathogens, such as *Aspergillus fumigatus*. May activate an anti-inflammatory signaling pathway by recruiting SIGIRR.

#### **IL36RN / IL1F5 Antibody (C-Terminus) - References**

- Smith D.E., et al. *J. Biol. Chem.* 275:1169-1175(2000).
- Mulero J.J., et al. *Biochem. Biophys. Res. Commun.* 263:702-706(1999).
- Barton J.L., et al. *Eur. J. Immunol.* 30:3299-3308(2000).
- Debets R., et al. *J. Immunol.* 167:1440-1446(2001).
- Busfield S.J., et al. *Genomics* 66:213-216(2000).