

PLG / Plasmin / Plasminogen Antibody
Sheep Polyclonal Antibody
Catalog # ALS16803**Specification**

PLG / Plasmin / Plasminogen Antibody - Product Information

Application	IHC
Primary Accession	P00747
Other Accession	5340
Reactivity	Human, Mouse, Rat
Host	Sheep
Clonality	Polyclonal
Calculated MW	90569

PLG / Plasmin / Plasminogen Antibody - Additional Information**Gene ID** 5340**Other Names**

PLG, Plasmin, Plasminogen

Target/Specificity

Mouse PLG / Plasmin / Plasminogen

Reconstitution & Storage50% glycerol/H₂O (vol/vol). Store at -20°C.**Precautions**

PLG / Plasmin / Plasminogen Antibody is for research use only and not for use in diagnostic or therapeutic procedures.

PLG / Plasmin / Plasminogen Antibody - Protein Information**Name** PLG**Function**

Plasmin dissolves the fibrin of blood clots and acts as a proteolytic factor in a variety of other processes including embryonic development, tissue remodeling, tumor invasion, and inflammation. In ovulation, weakens the walls of the Graafian follicle. It activates the urokinase-type plasminogen activator, collagenases and several complement zymogens, such as C1 and C5. Cleavage of fibronectin and laminin leads to cell detachment and apoptosis. Also cleaves fibrin, thrombospondin and von Willebrand factor. Its role in tissue remodeling and tumor invasion may be modulated by CSPG4. Binds to cells.

Cellular Location

Secreted. Note=Locates to the cell surface where it is proteolytically cleaved to produce the active plasmin. Interaction with HRG tethers it to the cell surface

Tissue Location

Present in plasma and many other extracellular fluids. It is synthesized in the liver

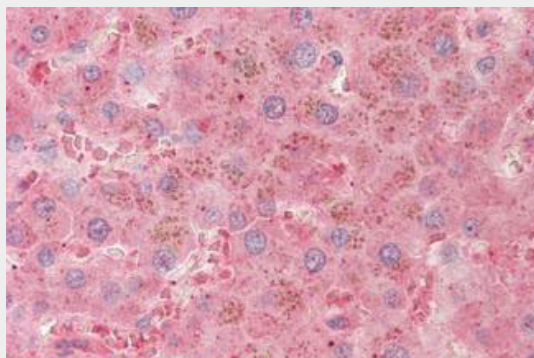
Volume

50 µl

PLG / Plasmin / Plasminogen Antibody - Protocols

Provided below are standard protocols that you may find useful for product applications.

- [Western Blot](#)
- [Blocking Peptides](#)
- [Dot Blot](#)
- [Immunohistochemistry](#)
- [Immunofluorescence](#)
- [Immunoprecipitation](#)
- [Flow Cytometry](#)
- [Cell Culture](#)

PLG / Plasmin / Plasminogen Antibody - Images

Anti-PLG / Plasmin / Plasminogen antibody IHC staining of human liver.

PLG / Plasmin / Plasminogen Antibody - Background

Plasmin dissolves the fibrin of blood clots and acts as a proteolytic factor in a variety of other processes including embryonic development, tissue remodeling, tumor invasion, and inflammation. In ovulation, weakens the walls of the Graafian follicle. It activates the urokinase-type plasminogen activator, collagenases and several complement zymogens, such as C1 and C5. Cleavage of fibronectin and laminin leads to cell detachment and apoptosis. Also cleaves fibrin, thrombospondin and von Willebrand factor. Its role in tissue remodeling and tumor invasion may be modulated by CSPG4. Binds to cells.

PLG / Plasmin / Plasminogen Antibody - References

Petersen T.E., et al. J. Biol. Chem. 265:6104-6111(1990).
Forsgren M., et al. FEBS Lett. 213:254-260(1987).
Browne M.J., et al. Submitted (OCT-1991) to the EMBL/GenBank/DDBJ databases.
Mungall A.J., et al. Nature 425:805-811(2003).
Sottrup-Jensen L., et al. Submitted (JUL-1977) to the PIR data bank.