

**MDFI / I-MF Antibody (Internal)**  
**Goat Polyclonal Antibody**  
**Catalog # ALS16812****Specification**

---

**MDFI / I-MF Antibody (Internal) - Product Information**

Application	IHC
Primary Accession	<a href="#">Q99750</a>
Other Accession	<a href="#">4188</a>
Reactivity	Human
Host	Goat
Clonality	Polyclonal
Calculated MW	25029

**MDFI / I-MF Antibody (Internal) - Additional Information****Gene ID** 4188**Other Names**

MDFI, I-MF, I-mfa, MyoD family inhibitor, Inhibitor of MyoD family a, Myogenic repressor I-mf

**Target/Specificity**

Human MDFI.

**Reconstitution & Storage**

Tris-buffered saline, pH 7.3, 0.5% BSA, 0.02% sodium azide. Store at -20°C. Minimize freezing and thawing.

**Precautions**

MDFI / I-MF Antibody (Internal) is for research use only and not for use in diagnostic or therapeutic procedures.

**MDFI / I-MF Antibody (Internal) - Protein Information****Name** MDFI**Function**

Inhibits the transactivation activity of the Myod family of myogenic factors and represses myogenesis. Acts by associating with Myod family members and retaining them in the cytoplasm by masking their nuclear localization signals. Can also interfere with the DNA- binding activity of Myod family members. Plays an important role in trophoblast and chondrogenic differentiation. Regulates the transcriptional activity of TCF7L1/TCF3 by interacting directly with TCF7L1/TCF3 and preventing it from binding DNA. Binds to the axin complex, resulting in an increase in the level of free beta-catenin. Affects axin regulation of the WNT and JNK signaling pathways (By similarity).

**Cellular Location**

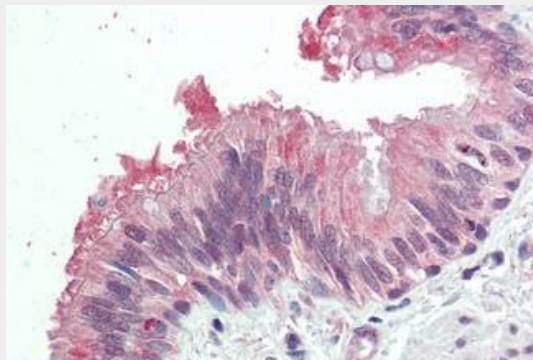
Nucleus. Cytoplasm.

## **MDFI / I-MF Antibody (Internal) - Protocols**

Provided below are standard protocols that you may find useful for product applications.

- [Western Blot](#)
- [Blocking Peptides](#)
- [Dot Blot](#)
- [Immunohistochemistry](#)
- [Immunofluorescence](#)
- [Immunoprecipitation](#)
- [Flow Cytometry](#)
- [Cell Culture](#)

## **MDFI / I-MF Antibody (Internal) - Images**



Anti-MDFI / I-MF antibody IHC staining of human bronchus.

## **MDFI / I-MF Antibody (Internal) - Background**

Inhibits the transactivation activity of the Myod family of myogenic factors and represses myogenesis. Acts by associating with Myod family members and retaining them in the cytoplasm by masking their nuclear localization signals. Can also interfere with the DNA-binding activity of Myod family members. Plays an important role in trophoblast and chondrogenic differentiation. Regulates the transcriptional activity of TCF7L1/TCF3 by interacting directly with TCF7L1/TCF3 and preventing it from binding DNA. Binds to the axin complex, resulting in an increase in the level of free beta-catenin. Affects axin regulation of the WNT and JNK signaling pathways (By similarity).

## **MDFI / I-MF Antibody (Internal) - References**

Kraut N., et al. Mamm. Genome 8:618-619(1997).  
Mungall A.J., et al. Nature 425:805-811(2003).