

APOA1 / Apolipoprotein A 1 Antibody
Mouse Monoclonal Antibody
Catalog # ALS16849**Specification**

APOA1 / Apolipoprotein A 1 Antibody - Product Information

Application	IHC
Primary Accession	P02647
Other Accession	335
Reactivity	Human
Host	Mouse
Clonality	Monoclonal
Isotype	IgG2a,k
Calculated MW	30778

APOA1 / Apolipoprotein A 1 Antibody - Additional Information**Gene ID** 335**Other Names**

APOA1, ApoA-I, APOAI, Apolipoprotein A-I, Apolipoprotein A1, Apo-AI

Target/Specificity

Recognizes Apolipoprotein A-I (Apo A-I). This product does not cross-react with APO A-II or APO B in competitive RIA.

Reconstitution & Storage

PBS, 0.1% sodium azide. Long term: -20°C; Short term: +4°C; Avoid freeze-thaw cycles.

Precautions

APOA1 / Apolipoprotein A 1 Antibody is for research use only and not for use in diagnostic or therapeutic procedures.

APOA1 / Apolipoprotein A 1 Antibody - Protein Information**Name** APOA1 ([HGNC:600](#))**Function**

Participates in the reverse transport of cholesterol from tissues to the liver for excretion by promoting cholesterol efflux from tissues and by acting as a cofactor for the lecithin cholesterol acyltransferase (LCAT). As part of the SPAP complex, activates spermatozoa motility.

Cellular Location

Secreted.

Tissue Location

Major protein of plasma HDL, also found in chylomicrons. Synthesized in the liver and small intestine. The oxidized form at Met-110 and Met-136 is increased in individuals with increased risk

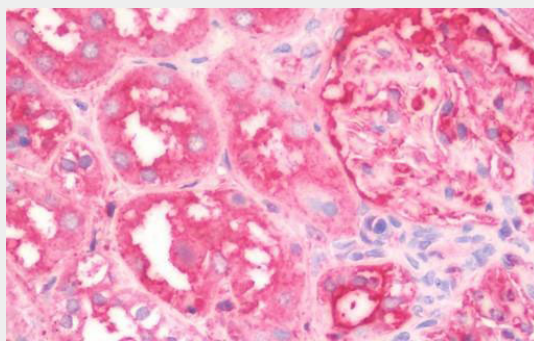
for coronary artery disease, such as in carrier of the eNOSa/b genotype and exposure to cigarette smoking. It is also present in increased levels in aortic lesions relative to native ApoA-I and increased levels are seen with increasing severity of disease

APOA1 / Apolipoprotein A 1 Antibody - Protocols

Provided below are standard protocols that you may find useful for product applications.

- [Western Blot](#)
- [Blocking Peptides](#)
- [Dot Blot](#)
- [Immunohistochemistry](#)
- [Immunofluorescence](#)
- [Immunoprecipitation](#)
- [Flow Cytometry](#)
- [Cell Culture](#)

APOA1 / Apolipoprotein A 1 Antibody - Images



Anti-APOA1 / Apolipoprotein A 1 antibody IHC staining of human kidney.

APOA1 / Apolipoprotein A 1 Antibody - Background

Participates in the reverse transport of cholesterol from tissues to the liver for excretion by promoting cholesterol efflux from tissues and by acting as a cofactor for the lecithin cholesterol acyltransferase (LCAT). As part of the SPAP complex, activates spermatozoa motility.

APOA1 / Apolipoprotein A 1 Antibody - References

- Shoulders C.C., et al. Nucleic Acids Res. 11:2827-2837(1983).
Cheung P., et al. Nucleic Acids Res. 11:3703-3715(1983).
Karathanasis S.K., et al. Proc. Natl. Acad. Sci. U.S.A. 80:6147-6151(1983).
Seilhamer J.J., et al. DNA 3:309-317(1984).
Sharpe C.R., et al. Nucleic Acids Res. 12:3917-3932(1984).