

BHMT Antibody (clone 3E11)
Mouse Monoclonal Antibody
Catalog # ALS16937**Specification**

BHMT Antibody (clone 3E11) - Product Information

Application	IHC, IF, WB, FC
Primary Accession	Q93088
Other Accession	635
Reactivity	Human
Host	Mouse
Clonality	Monoclonal
Isotype	IgG2a
Calculated MW	44998

BHMT Antibody (clone 3E11) - Additional Information**Gene ID** 635**Other Names**

BHMT, BHMT1

Target/Specificity

Human BHMT

Reconstitution & Storage

PBS, pH 7.3, 1% BSA, 50% glycerol, 0.02% sodium azide. Store at -20°C. Minimize freezing and thawing.

Precautions

BHMT Antibody (clone 3E11) is for research use only and not for use in diagnostic or therapeutic procedures.

BHMT Antibody (clone 3E11) - Protein Information**Name** BHMT {ECO:0000303|PubMed:8798461}**Function**

Involved in the regulation of homocysteine metabolism. Converts betaine and homocysteine to dimethylglycine and methionine, respectively. This reaction is also required for the irreversible oxidation of choline.

Cellular Location

Cytoplasm, cytosol {ECO:0000250|UniProtKB:O09171}. Nucleus {ECO:0000250|UniProtKB:O09171} Note=Predominantly localized in the cytoplasm with a small fraction detected in the nucleus. Translocates into the nucleus upon oxidative stress. {ECO:0000250|UniProtKB:O09171}

Tissue Location

Found exclusively in liver and kidney.

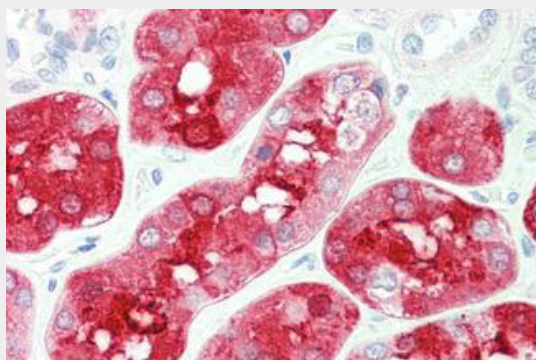
Volume

50 μ l

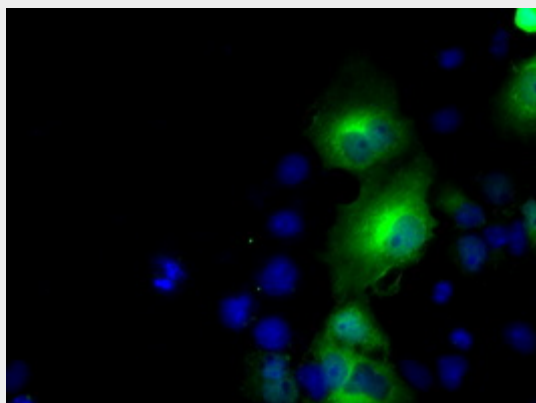
BHMT Antibody (clone 3E11) - Protocols

Provided below are standard protocols that you may find useful for product applications.

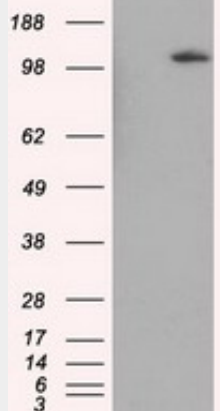
- [Western Blot](#)
- [Blocking Peptides](#)
- [Dot Blot](#)
- [Immunohistochemistry](#)
- [Immunofluorescence](#)
- [Immunoprecipitation](#)
- [Flow Cytometry](#)
- [Cell Culture](#)

BHMT Antibody (clone 3E11) - Images

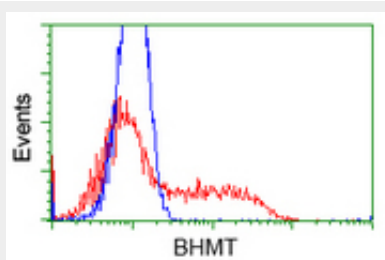
Anti-BHMT antibody IHC staining of human kidney.



Anti-BHMT mouse monoclonal antibody immunofluorescent staining of COS7 cells transiently...



HEK293T cells were transfected with the pCMV6-ENTRY control (Left lane) or pCMV6-ENTRY BHMT...



HEK293T cells transfected with either pCMV6-ENTRY BHMT (Red) or empty vector control plasmid...

BHMT Antibody (clone 3E11) - Background

Involved in the regulation of homocysteine metabolism. Converts betaine and homocysteine to dimethylglycine and methionine, respectively. This reaction is also required for the irreversible oxidation of choline.

BHMT Antibody (clone 3E11) - References

- Garrow T.A., et al. J. Biol. Chem. 271:22831-22838(1996).
- Park E.I., et al. J. Biol. Chem. 274:7816-7824(1999).
- Sunden S.L.F., et al. Arch. Biochem. Biophys. 345:171-174(1997).
- Millian N.S., et al. Arch. Biochem. Biophys. 356:93-98(1998).
- Evans J.C., et al. Structure 10:1159-1171(2002).