

ARF6 Antibody (aa84-113)
Rabbit Polyclonal Antibody
Catalog # ALS17032**Specification****ARF6 Antibody (aa84-113) - Product Information**

Application	IHC, WB, FC
Primary Accession	P62330
Other Accession	382
Reactivity	Human, Mouse
Host	Rabbit
Clonality	Polyclonal
Calculated MW	20082

ARF6 Antibody (aa84-113) - Additional Information**Gene ID** 382**Other Names**

ARF6, ADP-ribosylation factor 6

Target/Specificity

Human ARF6

Reconstitution & Storage

PBS, 0.09% sodium azide. Maintain refrigerated at 2-8°C for up to 6 months. For long term storage store at -20°C.

Precautions

ARF6 Antibody (aa84-113) is for research use only and not for use in diagnostic or therapeutic procedures.

ARF6 Antibody (aa84-113) - Protein Information**Name** ARF6 {ECO:0000303|Ref.6, ECO:0000312|HGNC:HGNC:659}**Function**

GTP-binding protein involved in protein trafficking that regulates endocytic recycling and cytoskeleton remodeling (PubMed:11266366, PubMed:21170023, PubMed:16737952, PubMed:7589240, PubMed:18400762, PubMed:32103017). GTP-bound form plays an important role in the transport of multiple palmitoylated proteins from the Golgi to the plasma membrane (PubMed:37461827). Required for normal completion of mitotic cytokinesis (By similarity). Plays a role in the reorganization of the

actin cytoskeleton and the formation of stress fibers (By similarity). Involved in the regulation of dendritic spine development, contributing to the regulation of dendritic branching and filopodia extension (PubMed:14978216). Potentiates the neurite outgrowth in primary neurons by interacting with the molecular adapter APBB1 (PubMed:36250347). Plays an important role in membrane trafficking, during junctional remodeling and epithelial polarization (PubMed:36017701). Regulates surface levels of adherens junction proteins such as CDH1 (By similarity). Required for NTRK1 sorting to the recycling pathway from early endosomes (By similarity).

Cellular Location

Cytoplasm, cytosol. Cell membrane; Lipid-anchor. Endosome membrane; Lipid-anchor. Recycling endosome membrane; Lipid-anchor. Cell projection, filopodium membrane; Lipid- anchor. Cell projection, ruffle. Cleavage furrow. Midbody, Midbody ring. Early endosome membrane {ECO:0000250|UniProtKB:P62331}; Lipid-anchor {ECO:0000250|UniProtKB:P62331}. Golgi apparatus, trans-Golgi network membrane {ECO:0000250|UniProtKB:P62331}; Lipid-anchor {ECO:0000250|UniProtKB:P62331}. Note=Distributed uniformly on the plasma membrane, as well as throughout the cytoplasm during metaphase Subsequently concentrated at patches in the equatorial region at the onset of cytokinesis, and becomes distributed in the equatorial region concurrent with cleavage furrow ingression. In late stages of cytokinesis, concentrates at the midbody ring/Flemming body (PubMed:23603394). Recruitment to the midbody ring requires both activation by PSD/EFA6A and interaction with KIF23/MKLP1 (PubMed:23603394). After abscission of the intercellular bridge, incorporated into one of the daughter cells as a midbody remnant and localizes to punctate structures beneath the plasma membrane (PubMed:23603394). Recruited to the cell membrane in association with CYTH2 and ARL4C (PubMed:17398095). Colocalizes with DAB2IP at the plasma membrane and endocytic vesicles (PubMed:19948740) Myristoylation is required for proper localization to membranes: myristoylation on Lys-3 allows ARF6 to remain on membranes during the GTPase cycle (PubMed:7589240, PubMed:32103017)

Tissue Location

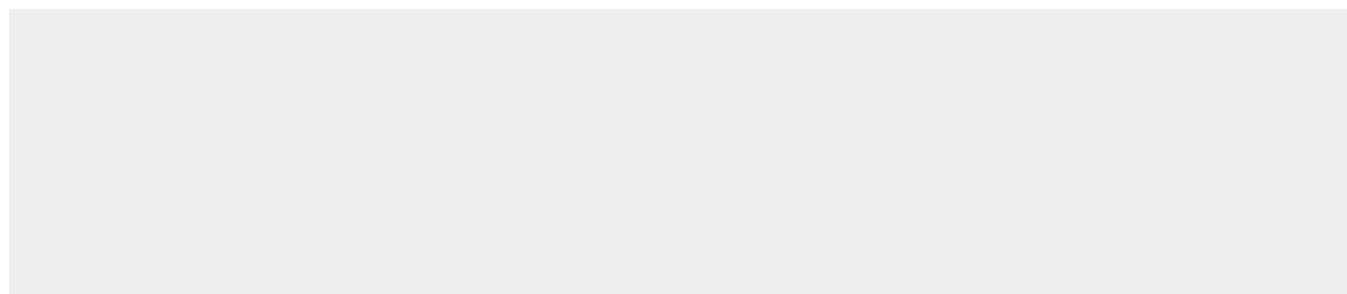
Ubiquitous, with higher levels in heart, substantia nigra, and kidney.

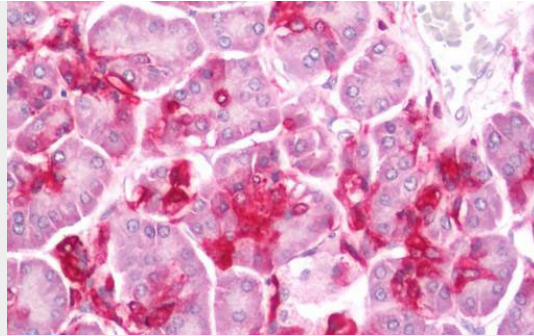
ARF6 Antibody (aa84-113) - Protocols

Provided below are standard protocols that you may find useful for product applications.

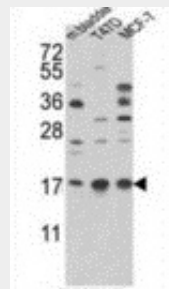
- [Western Blot](#)
- [Blocking Peptides](#)
- [Dot Blot](#)
- [Immunohistochemistry](#)
- [Immunofluorescence](#)
- [Immunoprecipitation](#)
- [Flow Cytometry](#)
- [Cell Culture](#)

ARF6 Antibody (aa84-113) - Images

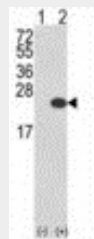




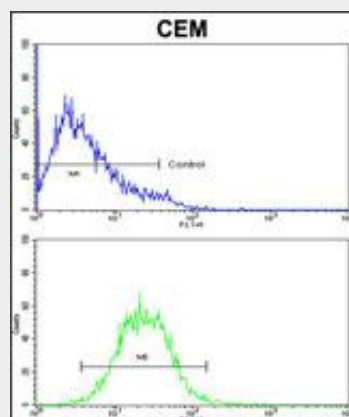
Human Pancreas: Formalin-Fixed, Paraffin-Embedded (FFPE)



Western blot of ARF6 Antibody (Center) in T47D, MCF-7 cell line and mouse bladder tissue lysates...



Western blot of ARF6 (arrow) using rabbit polyclonal ARF6 Antibody (Center).



ARF6 Antibody (Center) flow cytometry of CEM cells (bottom histogram) compared to a negative...

ARF6 Antibody (aa84-113) - Background

GTP-binding protein involved in protein trafficking that regulates endocytic recycling and cytoskeleton remodeling. Required for normal completion of mitotic cytokinesis. Plays a role in the reorganization of the actin cytoskeleton and the formation of stress fibers. May also modulate vesicle budding and uncoating within the Golgi apparatus. Involved in the regulation of dendritic

spine development, contributing to the regulation of dendritic branching and filopodia extension. Functions as an allosteric activator of the cholera toxin catalytic subunit, an ADP-ribosyltransferase.

ARF6 Antibody (aa84-113) - References

Tsuchiya M., et al. J. Biol. Chem. 266:2772-2777(1991).
Lebeda R.A., et al. DNA Cell Biol. 22:737-741(2003).
Mao M., et al. Proc. Natl. Acad. Sci. U.S.A. 95:8175-8180(1998).
Puhl H.L. III, et al. Submitted (MAR-2002) to the EMBL/GenBank/DDBJ databases.
Ota T., et al. Nat. Genet. 36:40-45(2004).