

WTAP Antibody (His351)
Rabbit Polyclonal Antibody
Catalog # ALS17051**Specification**

WTAP Antibody (His351) - Product Information

Application	IHC, WB
Primary Accession	Q15007
Other Accession	9589
Reactivity	Human, Mouse, Rat
Host	Rabbit
Clonality	Polyclonal
Calculated MW	44244

WTAP Antibody (His351) - Additional Information**Gene ID** 9589**Other Names**

WTAP, HFL(2)D, KIAA0105, PNAS-132, WT1-associated protein, Female-lethal(2)D homolog

Target/Specificity

Human WTAP

Reconstitution & Storage

PBS, pH 7.2, 0.05% sodium azide. Store at 4°C short term. Aliquot and store at -20°C long term. Avoid freeze-thaw cycles.

Precautions

WTAP Antibody (His351) is for research use only and not for use in diagnostic or therapeutic procedures.

WTAP Antibody (His351) - Protein Information**Name** WTAP {ECO:0000303|PubMed:11001926, ECO:0000312|HGNC:HGNC:16846}**Function**

Associated component of the WMM complex, a complex that mediates N6-methyladenosine (m6A) methylation of RNAs, a modification that plays a role in the efficiency of mRNA splicing and RNA processing (PubMed: [29507755](http://www.uniprot.org/citations/29507755)). Required for accumulation of METTL3 and METTL14 to nuclear speckle (PubMed: [24316715](http://www.uniprot.org/citations/24316715), PubMed: [24407421](http://www.uniprot.org/citations/24407421), PubMed: [24981863](http://www.uniprot.org/citations/24981863)). Acts as a mRNA splicing regulator (PubMed: [12444081](http://www.uniprot.org/citations/12444081)). Regulates G2/M cell-cycle transition by binding to the 3' UTR of CCNA2, which enhances its stability (PubMed: [17088532](http://www.uniprot.org/citations/17088532)).

Impairs WT1 DNA-binding ability and inhibits expression of WT1 target genes (PubMed:17095724).

Cellular Location

Nucleus speckle. Nucleus, nucleoplasm. Cytoplasm {ECO:0000250|UniProtKB:Q9ER69}.
Note=Mainly nuclear with some fraction located in the cytoplasm. ZC3H13 is required to anchor component of the MACOM subcomplex, such as VIRMA, in the nucleus {ECO:0000250|UniProtKB:Q9ER69}

Tissue Location

Ubiquitously expressed.

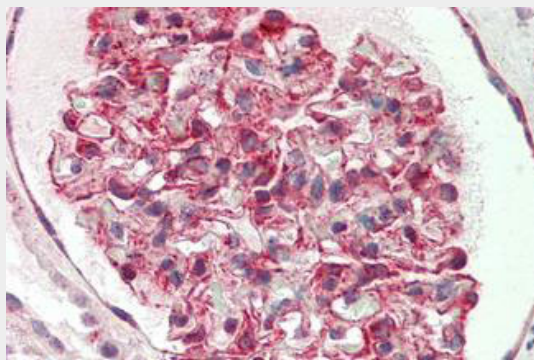
Volume

50 µl

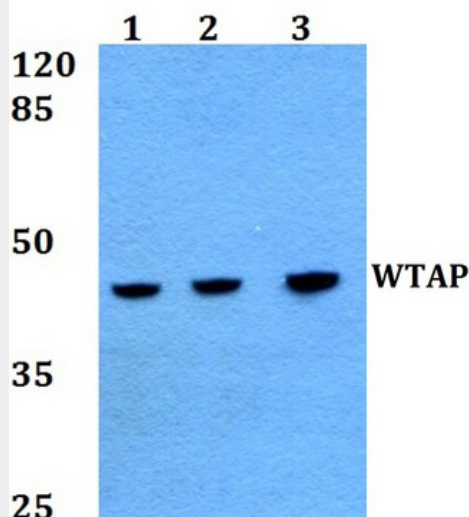
WTAP Antibody (His351) - Protocols

Provided below are standard protocols that you may find useful for product applications.

- [Western Blot](#)
- [Blocking Peptides](#)
- [Dot Blot](#)
- [Immunohistochemistry](#)
- [Immunofluorescence](#)
- [Immunoprecipitation](#)
- [Flow Cytometry](#)
- [Cell Culture](#)

WTAP Antibody (His351) - Images

Human Kidney: Formalin-Fixed, Paraffin-Embedded (FFPE)



Western blot analysis of WTAP Antibody at 1:500 dilution.

WTAP Antibody (His351) - Background

Regulatory subunit of the WMM N6-methyltransferase complex, a multiprotein complex that mediates N6-methyladenosine (m6A) methylation of some adenosine residues of some mRNAs and plays a role in the efficiency of mRNA splicing and processing and mRNA stability. Required for accumulation of METTL3 and METTL14 to nuclear speckle. Acts as a mRNA splicing regulator. Regulates G2/M cell-cycle transition by binding to the 3' UTR of CCNA2, which enhances its stability. Impairs WT1 DNA-binding ability and inhibits expression of WT1 target genes.

WTAP Antibody (His351) - References

Ortega A.,et al.J. Biol. Chem. 278:3040-3047(2003).
Nagase T.,et al.DNA Res. 2:37-43(1995).
Ota T.,et al.Nat. Genet. 36:40-45(2004).
Mungall A.J.,et al.Nature 425:805-811(2003).
Mural R.J.,et al.Submitted (SEP-2005) to the EMBL/GenBank/DDBJ databases.