

Vimentin Antibody (clone 2A52)
Mouse Monoclonal Antibody
Catalog # ALS17067**Specification**

Vimentin Antibody (clone 2A52) - Product Information

Application	IHC, ICC, WB
Primary Accession	P08670
Other Accession	7431
Reactivity	Human, Mouse, Rat, Pig, Bovine
Host	Mouse
Clonality	Monoclonal
Isotype	IgG1,k
Calculated MW	53652

Vimentin Antibody (clone 2A52) - Additional Information**Gene ID** 7431**Other Names**

VIM, Vimentin

Target/Specificity

Clone 2A52 is known to react with vimentin from human, cow, pig, mouse, rat and other mammals. Since vimentin is highly conserved, it is likely that the antibody is effective on other species also.

Reconstitution & Storage

PBS, 10 mM sodium azide. +4°C or -20°C, Avoid repeated freezing and thawing.

Precautions

Vimentin Antibody (clone 2A52) is for research use only and not for use in diagnostic or therapeutic procedures.

Vimentin Antibody (clone 2A52) - Protein Information**Name** VIM**Function**

Vimentins are class-III intermediate filaments found in various non-epithelial cells, especially mesenchymal cells. Vimentin is attached to the nucleus, endoplasmic reticulum, and mitochondria, either laterally or terminally.

Cellular Location

Cytoplasm. Cytoplasm, cytoskeleton. Nucleus matrix {ECO:0000250|UniProtKB:P31000}. Cell membrane {ECO:0000250|UniProtKB:P20152}

Tissue Location

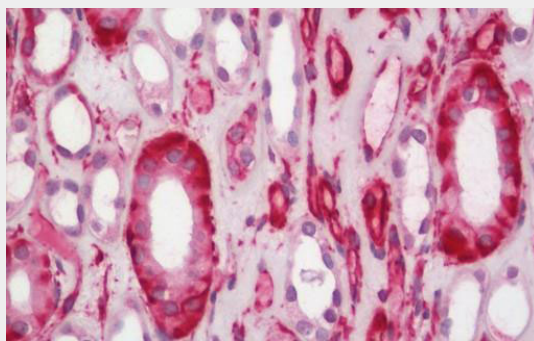
Highly expressed in fibroblasts, some expression in T- and B-lymphocytes, and little or no expression in Burkitt's lymphoma cell lines. Expressed in many hormone-independent mammary carcinoma cell lines.

Vimentin Antibody (clone 2A52) - Protocols

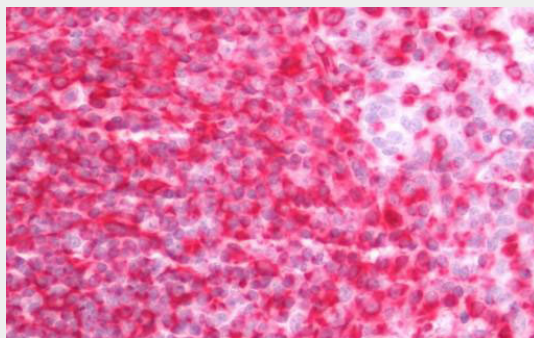
Provided below are standard protocols that you may find useful for product applications.

- [Western Blot](#)
- [Blocking Peptides](#)
- [Dot Blot](#)
- [Immunohistochemistry](#)
- [Immunofluorescence](#)
- [Immunoprecipitation](#)
- [Flow Cytometry](#)
- [Cell Culture](#)

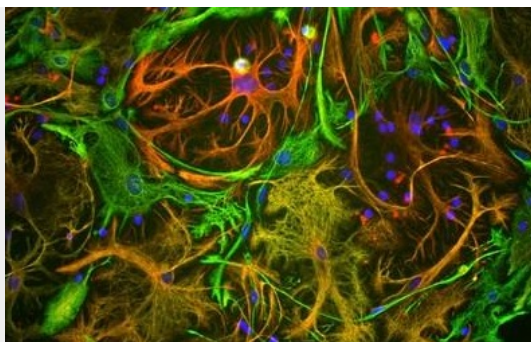
Vimentin Antibody (clone 2A52) - Images



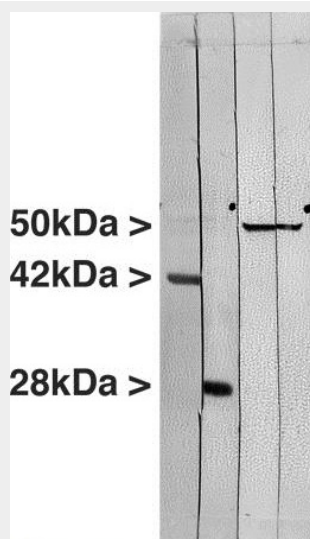
Human Kidney: Formalin-Fixed, Paraffin-Embedded (FFPE)



Human Tonsil: Formalin-Fixed, Paraffin-Embedded (FFPE)



View of mixed neuron/glial cultures stained with vimentin antibody (green) and rabbit antibody...



Western blot of crude extract of the human carcinoma HeLa cell line.

Vimentin Antibody (clone 2A52) - Background

Vimentins are class-III intermediate filaments found in various non-epithelial cells, especially mesenchymal cells. Vimentin is attached to the nucleus, endoplasmic reticulum, and mitochondria, either laterally or terminally.

Vimentin Antibody (clone 2A52) - References

- Ferrari S.,et al.Mol. Cell. Biol. 6:3614-3620(1986).
- Honore B.,et al.Nucleic Acids Res. 18:6692-6692(1990).
- Hartmann T.B.,et al.Br. J. Dermatol. 150:252-258(2004).
- Zimbelmann R.,et al.Submitted (JUN-2007) to the EMBL/GenBank/DDBJ databases.
- Ota T.,et al.Nat. Genet. 36:40-45(2004).