

PRX-1 / PRRX1 Antibody (Internal)
Rabbit Polyclonal Antibody
Catalog # ALS17105**Specification**

PRX-1 / PRRX1 Antibody (Internal) - Product Information

Application	IHC
Primary Accession	P54821
Other Accession	5396
Reactivity	Human, Mouse, Rat
Host	Rabbit
Clonality	Polyclonal
Calculated MW	27296

PRX-1 / PRRX1 Antibody (Internal) - Additional Information**Gene ID** [5396](#)**Other Names**

PRRX1, AGOTC, Homeobox protein PHOX1, Paired related homeobox 1, PHOX1, PRX1, Paired mesoderm homeo box 1, PRX-1, PMX1

Target/Specificity

PRRX1 antibody is human, mouse and rat reactive. At least two isoforms of PRRX1 are known to exist; this antibody will detect both isoforms.

Reconstitution & Storage

PBS, 0.02% sodium azide. Long term: -20°C; Short term: +4°C. Avoid repeat freeze-thaw cycles.

Precautions

PRX-1 / PRRX1 Antibody (Internal) is for research use only and not for use in diagnostic or therapeutic procedures.

PRX-1 / PRRX1 Antibody (Internal) - Protein Information**Name** PRRX1**Synonyms** PMX1**Function**

Master transcription factor of stromal fibroblasts for myofibroblastic lineage progression. Orchestrates the functional drift of fibroblasts into myofibroblastic phenotype via TGF-beta signaling by remodeling a super-enhancer landscape. Through this function, plays an essential role in wound healing process (PubMed: <http://www.uniprot.org/citations/35589735> target="_blank">35589735). Acts as a transcriptional regulator of muscle creatine kinase (MCK) and so has a role in the establishment of diverse mesodermal muscle types. The protein binds to an A/T-rich element in the muscle creatine enhancer (By similarity). May play a role in homeostasis and regeneration of bone, white adipose tissue and derm (By similarity).

Cellular Location

Nucleus {ECO:0000250|UniProtKB:P63013}.

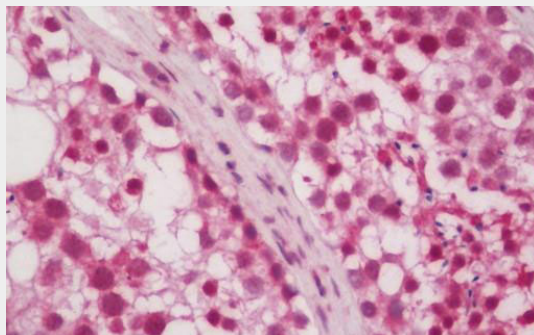
Tissue Location

[Isoform 1]: Widely expressed in embryonic and adult tissues, with highest levels in skeletal muscle. Isoform 1 is either expressed at similar or higher levels compared to isoform 2 in all embryonic tissues but skeletal muscle and heart. In adult tissues, expressed at lower levels compared to isoform 2

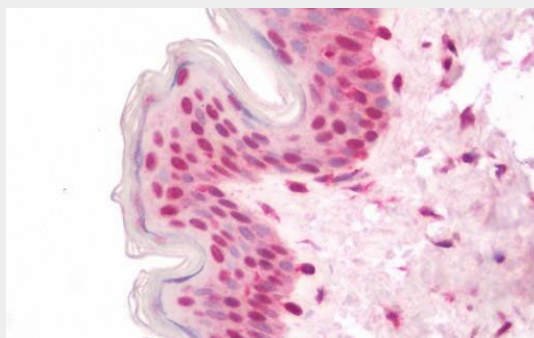
PRX-1 / PRRX1 Antibody (Internal) - Protocols

Provided below are standard protocols that you may find useful for product applications.

- [Western Blot](#)
- [Blocking Peptides](#)
- [Dot Blot](#)
- [Immunohistochemistry](#)
- [Immunofluorescence](#)
- [Immunoprecipitation](#)
- [Flow Cytometry](#)
- [Cell Culture](#)

PRX-1 / PRRX1 Antibody (Internal) - Images

Human Testis: Formalin-Fixed, Paraffin-Embedded (FFPE)



Human Skin: Formalin-Fixed, Paraffin-Embedded (FFPE)

PRX-1 / PRRX1 Antibody (Internal) - Background

Acts as a transcriptional regulator of muscle creatine kinase (MCK) and so has a role in the establishment of diverse mesodermal muscle types. The protein binds to an A/T-rich element in the muscle creatine enhancer (By similarity).

PRX-1 / PRRX1 Antibody (Internal) - References

Goshima N.,et al.Nat. Methods 5:1011-1017(2008).
Gregory S.G.,et al.Nature 441:315-321(2006).
Grueneberg D.A.,et al.Science 257:1089-1095(1992).
Sergi C.,et al.Clin. Genet. 79:293-295(2011).