

PACS1 Antibody (Internal)
Rabbit Polyclonal Antibody
Catalog # ALS17141**Specification**

PACS1 Antibody (Internal) - Product Information

Application	IHC-P
Primary Accession	Q6VY07
Other Accession	55690
Reactivity	Human, Mouse, Rat
Host	Rabbit
Clonality	Polyclonal
Calculated MW	104898

PACS1 Antibody (Internal) - Additional Information**Gene ID** 55690**Other Names**

PACS1, KIAA1175, PACS-1

Target/Specificity

PACS1 antibody is human, mouse and rat reactive. Multiple isoforms of PACS1 are known to exist. PACS1 antibody is predicted to not cross-react with PACS2.

Reconstitution & Storage

PBS, 0.02% sodium azide. Long term: -20°C; Short term: +4°C. Avoid repeat freeze-thaw cycles.

Precautions

PACS1 Antibody (Internal) is for research use only and not for use in diagnostic or therapeutic procedures.

PACS1 Antibody (Internal) - Protein Information**Name** PACS1**Synonyms** KIAA1175**Function**

Coat protein that is involved in the localization of trans- Golgi network (TGN) membrane proteins that contain acidic cluster sorting motifs. Controls the endosome-to-Golgi trafficking of furin and mannose-6-phosphate receptor by connecting the acidic-cluster- containing cytoplasmic domain of these molecules with the adapter- protein complex-1 (AP-1) of endosomal clathrin-coated membrane pits. Involved in HIV-1 nef-mediated removal of MHC-I from the cell surface to the TGN. Required for normal ER Ca²⁺ handling in lymphocytes. Together with WDR37, it plays an essential role in lymphocyte development, quiescence and survival. Required for stabilizing peripheral lymphocyte populations (By similarity).

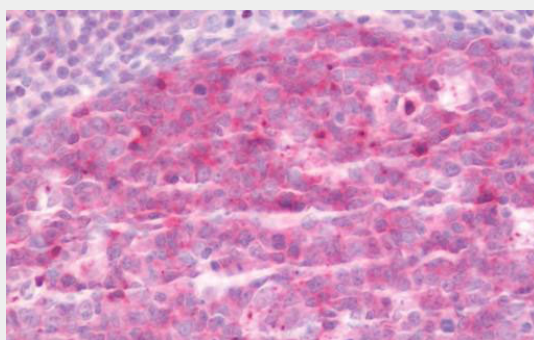
Cellular Location

Golgi apparatus, trans-Golgi network {ECO:0000250|UniProtKB:O88588}. Note=Localizes in the perinuclear region, probably the TGN.

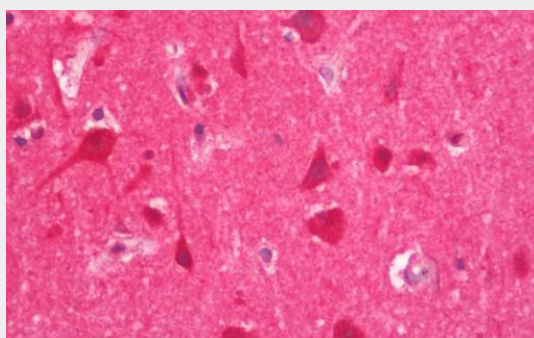
PACS1 Antibody (Internal) - Protocols

Provided below are standard protocols that you may find useful for product applications.

- [Western Blot](#)
- [Blocking Peptides](#)
- [Dot Blot](#)
- [Immunohistochemistry](#)
- [Immunofluorescence](#)
- [Immunoprecipitation](#)
- [Flow Cytometry](#)
- [Cell Culture](#)

PACS1 Antibody (Internal) - Images

Human Tonsil: Formalin-Fixed, Paraffin-Embedded (FFPE)



Human Brain, Cortex: Formalin-Fixed, Paraffin-Embedded (FFPE)

PACS1 Antibody (Internal) - Background

Coat protein that is involved in the localization of trans-Golgi network (TGN) membrane proteins that contain acidic cluster sorting motifs. Controls the endosome-to-Golgi trafficking of furin and mannose-6-phosphate receptor by connecting the acidic-cluster-containing cytoplasmic domain of these molecules with the adapter-protein complex-1 (AP-1) of endosomal clathrin-coated membrane pits. Involved in HIV-1 nef-mediated removal of MHC-I from the cell surface to the TGN.

PACS1 Antibody (Internal) - References

Wan L.,et al.Submitted (JUN-2003) to the EMBL/GenBank/DDBJ databases.
Ota T.,et al.Nat. Genet. 36:40-45(2004).
Hirosawa M.,et al.DNA Res. 6:329-336(1999).
Crump C.M.,et al.EMBO J. 20:2191-2201(2001).
Piguet V.,et al.Nat. Cell Biol. 2:163-167(2000).