

**C1D Antibody (aa1-135)
Rabbit Polyclonal Antibody
Catalog # ALS17149****Specification**

C1D Antibody (aa1-135) - Product Information

Application	IHC-P
Primary Accession	Q13901
Other Accession	10438
Reactivity	Human
Host	Rabbit
Clonality	Polyclonal
Isotype	IgG
Calculated MW	16019

C1D Antibody (aa1-135) - Additional Information**Gene ID** 10438**Other Names**

C1D, C1D DNA-binding protein, HC1D, Nuclear DNA-binding protein, SUNCOR, SUN-CoR

Target/Specificity

Human C1D

Reconstitution & Storage

PBS, pH 7.4, 0.03% Proclin 300, 50% glycerol. Aliquot and store at -20°C or -80°C. Avoid freeze-thaw cycles.

Precautions

C1D Antibody (aa1-135) is for research use only and not for use in diagnostic or therapeutic procedures.

C1D Antibody (aa1-135) - Protein Information**Name** C1D**Function**

Plays a role in the recruitment of the RNA exosome complex to pre-rRNA to mediate the 3'-5' end processing of the 5.8S rRNA; this function may include MPHOSPH6. Can activate PRKDC not only in the presence of linear DNA but also in the presence of supercoiled DNA. Can induce apoptosis in a p53/TP53 dependent manner. May regulate the TRAX/TSN complex formation. Potentiates transcriptional repression by NR1D1 and THRB (By similarity).

Cellular Location

Nucleus. Cytoplasm. Nucleus, nucleolus. Note=EXOSC10 is required for nucleolar localization (PubMed:17412707). Colocalizes with TSNA1 in the nucleus (PubMed:11801738).

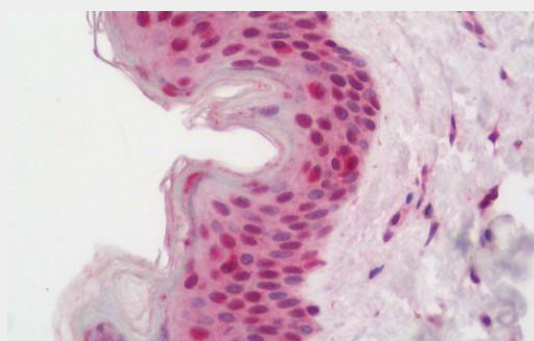
Tissue Location

Ubiquitous. Expressed at very high levels in the hippocampus, medulla oblongata, mammary gland, thyroid and salivary gland. Expressed at high levels in the fetal; lung, liver and kidney. Expressed at low levels in skeletal muscle, appendix, heart, lung and colon.

C1D Antibody (aa1-135) - Protocols

Provided below are standard protocols that you may find useful for product applications.

- [Western Blot](#)
- [Blocking Peptides](#)
- [Dot Blot](#)
- [Immunohistochemistry](#)
- [Immunofluorescence](#)
- [Immunoprecipitation](#)
- [Flow Cytometry](#)
- [Cell Culture](#)

C1D Antibody (aa1-135) - Images

Human Skin: Formalin-Fixed, Paraffin-Embedded (FFPE)

C1D Antibody (aa1-135) - Background

Plays a role in the recruitment of the RNA exosome complex to pre-rRNA to mediate the 3'-5' end processing of the 5.8S rRNA; this function may include MPHOSPH6. Can activate PRKDC not only in the presence of linear DNA but also in the presence of supercoiled DNA. Can induce apoptosis in a p53/TP53 dependent manner. May regulate the TRAX/TSN complex formation. Potentiates transcriptional repression by NR1D1 and THRB (By similarity).

C1D Antibody (aa1-135) - References

- Nehls P., et al. Nucleic Acids Res. 26:1160-1166(1998).
Ota T., et al. Nat. Genet. 36:40-45(2004).
Hillier L.W., et al. Nature 434:724-731(2005).
Mural R.J., et al. Submitted (SEP-2005) to the EMBL/GenBank/DDBJ databases.
Yavuzer U., et al. Genes Dev. 12:2188-2199(1998).