

CDH1 / E Cadherin Antibody
Goat Polyclonal Antibody
Catalog # ALS17189**Specification**

CDH1 / E Cadherin Antibody - Product Information

| | |
|-------------------|--------------------------------|
| Application | IHC-P, WB |
| Primary Accession | P12830 |
| Other Accession | 999 |
| Reactivity | Human, Mouse, Rat, Monkey, Dog |
| Host | Goat |
| Clonality | Polyclonal |
| Calculated MW | 97456 |

CDH1 / E Cadherin Antibody - Additional Information**Gene ID** 999**Other Names**

CDH1, CD324, CDHE, Cell-CAM 120/80, E Cadherin, E-Cadherin, ECAD, Epithelial cadherin, Arc-1, UVO, Cadherin-1, CAM 120/80, CD324 antigen, LCAM, Uvomorulin

Target/Specificity

Detects endogenous levels of total E-cadherin protein by Western blot in the whole cell lysates (e.g. HeLa and COS-7). This Ab does not recognize CDH2.

Reconstitution & Storage

PBS, 20% glycerol, 0.05% sodium azide. Store at 4°C for one month or -20°C for longer. Avoid freeze/thaw cycles.

Precautions

CDH1 / E Cadherin Antibody is for research use only and not for use in diagnostic or therapeutic procedures.

CDH1 / E Cadherin Antibody - Protein Information**Name** CDH1**Synonyms** CDHE, UVO**Function**

Cadherins are calcium-dependent cell adhesion proteins (PubMed:[11976333](http://www.uniprot.org/citations/11976333)). They preferentially interact with themselves in a homophilic manner in connecting cells; cadherins may thus contribute to the sorting of heterogeneous cell types. CDH1 is involved in mechanisms regulating cell-cell adhesions, mobility and proliferation of epithelial cells (PubMed:[11976333](http://www.uniprot.org/citations/11976333)). Has a potent invasive suppressor role. It is a ligand for integrin alpha-E/beta-7.

Cellular Location

Cell junction, adherens junction. Cell membrane; Single-pass type I membrane protein. Endosome. Golgi apparatus, trans-Golgi network. Note=Colocalizes with DLGAP5 at sites of cell-cell contact in intestinal epithelial cells. Anchored to actin microfilaments through association with alpha-, beta- and gamma-catenin. Sequential proteolysis induced by apoptosis or calcium influx, results in translocation from sites of cell-cell contact to the cytoplasm Colocalizes with RAB11A endosomes during its transport from the Golgi apparatus to the plasma membrane

Tissue Location

Non-neural epithelial tissues.

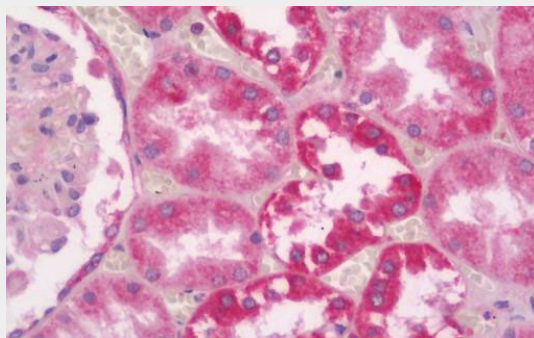
Volume

100 µl

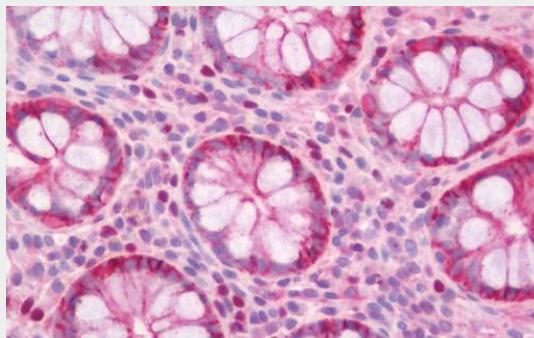
CDH1 / E Cadherin Antibody - Protocols

Provided below are standard protocols that you may find useful for product applications.

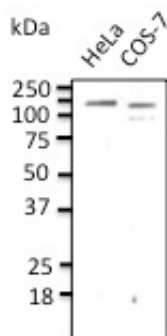
- [Western Blot](#)
- [Blocking Peptides](#)
- [Dot Blot](#)
- [Immunohistochemistry](#)
- [Immunofluorescence](#)
- [Immunoprecipitation](#)
- [Flow Cytometry](#)
- [Cell Culture](#)

CDH1 / E Cadherin Antibody - Images

Human Kidney: Formalin-Fixed, Paraffin-Embedded (FFPE)



Human Colon: Formalin-Fixed, Paraffin-Embedded (FFPE)



Endogenous CDH1 detected with Anti-CDH1 Ab at 1:500 dilution. Lysate at 100ug per lane.

CDH1 / E Cadherin Antibody - Background

Cadherins are calcium-dependent cell adhesion proteins. They preferentially interact with themselves in a homophilic manner in connecting cells; cadherins may thus contribute to the sorting of heterogeneous cell types. CDH1 is involved in mechanisms regulating cell-cell adhesions, mobility and proliferation of epithelial cells. Has a potent invasive suppressor role. It is a ligand for integrin alpha-E/beta-7.

CDH1 / E Cadherin Antibody - References

Bussemakers M.J.G.,et al.Mol. Biol. Rep. 17:123-128(1993).
Oda T.,et al.Proc. Natl. Acad. Sci. U.S.A. 91:1858-1862(1994).
Rimm D.L.,et al.Biochem. Biophys. Res. Commun. 200:1754-1761(1994).
Ito K.,et al.Oncogene 18:7080-7090(1999).
Shibamoto S.,et al.Submitted (MAR-1999) to the EMBL/GenBank/DDBJ databases.