

**FOXL2 Antibody (C-Terminus)**  
**Goat Polyclonal Antibody**  
**Catalog # ALS17229****Specification**

---

**FOXL2 Antibody (C-Terminus) - Product Information**

Application	IHC-P, WB
Primary Accession	<a href="#">P58012</a>
Other Accession	<a href="#">668</a>
Reactivity	Human, Mouse, Rat, Rabbit, Monkey, Pig, Bovine
Host	Goat
Clonality	Polyclonal
Calculated MW	38772

**FOXL2 Antibody (C-Terminus) - Additional Information****Gene ID** 668**Other Names**

FOXL2, BPES, BPES1, Forkhead box L2, Forkhead box protein L2, PFRK, PINTO, POF3

**Target/Specificity**

Human FOXL2.

**Reconstitution & Storage**

Tris-buffered saline, pH 7.3, 0.5% BSA, 0.02% sodium azide. Store at -20°C. Minimize freezing and thawing.

**Precautions**

FOXL2 Antibody (C-Terminus) is for research use only and not for use in diagnostic or therapeutic procedures.

**FOXL2 Antibody (C-Terminus) - Protein Information****Name** FOXL2**Function**

Transcriptional regulator. Critical factor essential for ovary differentiation and maintenance, and repression of the genetic program for somatic testis determination. Prevents trans- differentiation of ovary to testis through transcriptional repression of the Sertoli cell-promoting gene SOX9 (By similarity). Has apoptotic activity in ovarian cells. Suppresses ESR1-mediated transcription of PTGS2/COX2 stimulated by tamoxifen (By similarity). Is a regulator of CYP19 expression (By similarity). Participates in SMAD3-dependent transcription of FST via the intronic SMAD-binding element (By similarity). Is a transcriptional repressor of STAR. Activates SIRT1 transcription under cellular stress conditions. Activates transcription of OSR2.

**Cellular Location**

Nucleus {ECO:0000255|PROSITE-ProRule:PRU00089, ECO:0000269|PubMed:19744555}

#### Tissue Location

In addition to its expression in the developing eyelid, it is transcribed very early in somatic cells of the developing gonad (before sex determination) and its expression persists in the follicular cells of the adult ovary

#### Volume

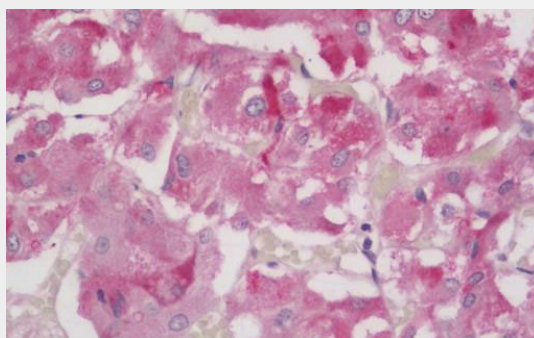
50  $\mu$ l

### FOXL2 Antibody (C-Terminus) - Protocols

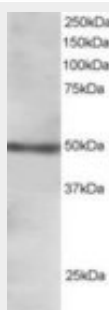
Provided below are standard protocols that you may find useful for product applications.

- [Western Blot](#)
- [Blocking Peptides](#)
- [Dot Blot](#)
- [Immunohistochemistry](#)
- [Immunofluorescence](#)
- [Immunoprecipitation](#)
- [Flow Cytometry](#)
- [Cell Culture](#)

### FOXL2 Antibody (C-Terminus) - Images



Human Adrenal: Formalin-Fixed, Paraffin-Embedded (FFPE)



Antibody staining (1.5  $\mu$ g/ml) of Human Ovary extracts (RIPA buffer, 30  $\mu$ g total protein per lane).

### FOXL2 Antibody (C-Terminus) - Background

Transcriptional regulator. Critical factor essential for ovary differentiation and maintenance, and repression of the genetic program for somatic testis determination. Prevents trans- differentiation of ovary to testis through transcriptional repression of the Sertoli cell-promoting gene SOX9 (By

similarity). Has apoptotic activity in ovarian cells. Suppresses ESR1-mediated transcription of PTGS2/COX2 stimulated by tamoxifen (By similarity). Is a regulator of CYP19 expression (By similarity). Participates in SMAD3-dependent transcription of FST via the intronic SMAD-binding element (By similarity). Is a transcriptional repressor of STAR. Activates SIRT1 transcription under cellular stress conditions. Activates transcription of OSR2.

#### **FOXL2 Antibody (C-Terminus) - References**

Crisponi L.,et al.Nat. Genet. 27:159-166(2001).  
Xu Y.,et al.Submitted (MAR-2005) to the EMBL/GenBank/DDBJ databases.  
Lee K.,et al.Biochem. Biophys. Res. Commun. 336:876-881(2005).  
Kuo F.T.,et al.Cell. Signal. 21:1935-1944(2009).  
Benayoun B.A.,et al.Hum. Mol. Genet. 18:632-644(2009).