

NDRG1 Antibody
Rabbit Polyclonal Antibody
Catalog # ALS17242**Specification**

NDRG1 Antibody - Product Information

Application	IHC-P, IF, WB
Primary Accession	O92597
Other Accession	10397
Reactivity	Human, Mouse, Rat
Host	Rabbit
Clonality	Polyclonal
Isotype	IgG
Calculated MW	42835

NDRG1 Antibody - Additional Information**Gene ID** 10397**Other Names**

NDRG1, CMT4D, DRG-1, GC4, HMSNL, Protein regulated by oxygen-1, PROXY1, Protein NDRG1, TARG1, TDD5, NDR1, RTP, CAP43, N-myc downstream regulated 1, NMSL, RIT42

Target/Specificity

Human NDRG1

Reconstitution & Storage

PBS, pH 7.3, 0.02% sodium azide, 50% glycerol. Long term: -80°C; Short term: -20°C. Avoid freeze-thaw cycles.

Precautions

NDRG1 Antibody is for research use only and not for use in diagnostic or therapeutic procedures.

NDRG1 Antibody - Protein Information**Name** NDRG1**Synonyms** CAP43, DRG1, RTP**Function**

Stress-responsive protein involved in hormone responses, cell growth, and differentiation. Acts as a tumor suppressor in many cell types. Necessary but not sufficient for p53/TP53-mediated caspase activation and apoptosis. Has a role in cell trafficking, notably of the Schwann cell, and is necessary for the maintenance and development of the peripheral nerve myelin sheath. Required for vesicular recycling of CDH1 and TF. May also function in lipid trafficking. Protects cells from spindle disruption damage. Functions in p53/TP53-dependent mitotic spindle checkpoint. Regulates microtubule dynamics and maintains euploidy.

Cellular Location

Cytoplasm, cytosol. Cytoplasm, cytoskeleton, microtubule organizing center, centrosome. Nucleus. Cell membrane Note=Mainly cytoplasmic but differentially localized to other regions Associates with the plasma membrane in intestinal epithelia and lactating mammary gland. Translocated to the nucleus in a p53/TP53- dependent manner. In prostate epithelium and placental chorion, located in both the cytoplasm and in the nucleus. No nuclear localization in colon epithelium cells. In intestinal mucosa, prostate and renal cortex, located predominantly adjacent to adherens junctions Cytoplasmic with granular staining in proximal tubular cells of the kidney and salivary gland ducts. Recruits to the membrane of recycling/sorting and late endosomes via binding to phosphatidylinositol 4-phosphate. Associates with microtubules Colocalizes with TUBG1 in the centrosome. Cytoplasmic location increased with hypoxia. Phosphorylated form found associated with centromeres during S-phase of mitosis and with the plasma membrane

Tissue Location

Ubiquitous; expressed most prominently in placental membranes and prostate, kidney, small intestine, and ovary tissues Also expressed in heart, brain, skeletal muscle, lung, liver and pancreas. Low levels in peripheral blood leukocytes and in tissues of the immune system. Expressed mainly in epithelial cells. Also found in Schwann cells of peripheral neurons. Reduced expression in adenocarcinomas compared to normal tissues. In colon, prostate and placental membranes, the cells that border the lumen show the highest expression.

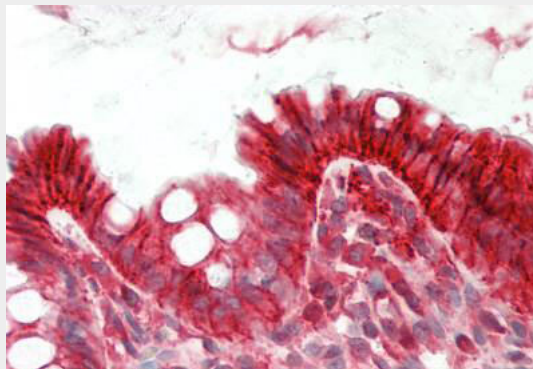
Volume

50 µl

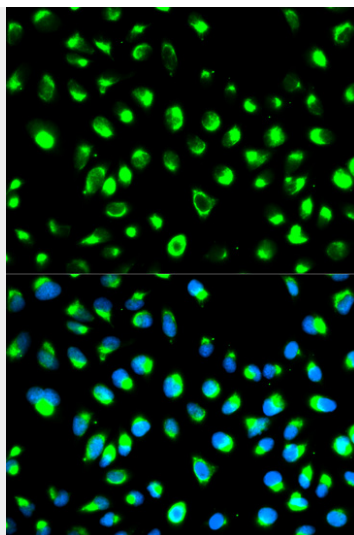
NDRG1 Antibody - Protocols

Provided below are standard protocols that you may find useful for product applications.

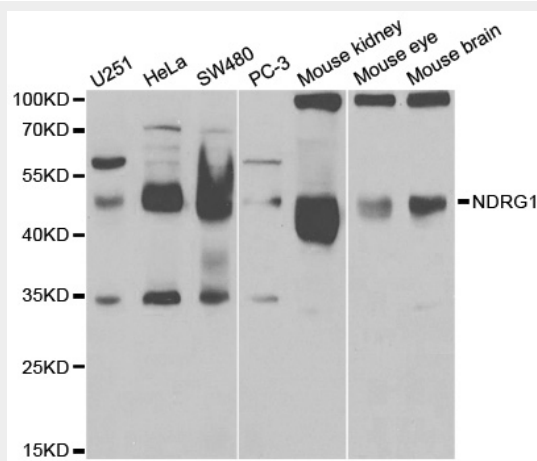
- [Western Blot](#)
- [Blocking Peptides](#)
- [Dot Blot](#)
- [Immunohistochemistry](#)
- [Immunofluorescence](#)
- [Immunoprecipitation](#)
- [Flow Cytometry](#)
- [Cell Culture](#)

NDRG1 Antibody - Images

Human Colon: Formalin-Fixed, Paraffin-Embedded (FFPE)



Immunofluorescence analysis of MCF7 cell using NDRG1 antibody. Blue: DAPI for nuclear staining.



Western blot analysis of extracts of various cell lines, using NDRG1 antibody.

NDRG1 Antibody - Background

Stress-responsive protein involved in hormone responses, cell growth, and differentiation. Acts as a tumor suppressor in many cell types. Necessary but not sufficient for p53/TP53- mediated caspase activation and apoptosis. Has a role in cell trafficking, notably of the Schwann cell, and is necessary for the maintenance and development of the peripheral nerve myelin sheath. Required for vesicular recycling of CDH1 and TF. May also function in lipid trafficking. Protects cells from spindle disruption damage. Functions in p53/TP53-dependent mitotic spindle checkpoint. Regulates microtubule dynamics and maintains euploidy.

NDRG1 Antibody - References

Kokame K.,et al.J. Biol. Chem. 271:29659-29665(1996).
van Belzen N.,et al.Lab. Invest. 77:85-92(1997).
Zhou D.,et al.Cancer Res. 58:2182-2189(1998).
Piquemal D.,et al.Biochim. Biophys. Acta 1450:364-373(1999).
Ebert L.,et al.Submitted (JUN-2004) to the EMBL/GenBank/DDBJ databases.