

**Anti-TBCC Antibody**  
**Rabbit Anti Human Polyclonal Antibody**  
**Catalog # ALS17268****Specification**

---

**Anti-TBCC Antibody - Product Information**

Application	IHC-P
Primary Accession	<a href="#">Q15814</a>
Predicted	Human, Mouse
Host	Rabbit
Clonality	Polyclonal
Isotype	IgG
Calculated MW	39248

**Anti-TBCC Antibody - Additional Information****Gene ID** 6903**Alias Symbol** TBCC**Other Names**

TBCC, CFC, Cofactor c, Tubulin-specific chaperone C, Tubulin-folding cofactor C, Tubulin folding cofactor C

**Target/Specificity**

Human TBCC

**Reconstitution & Storage**

PBS, pH 7.4, 0.03% Proclin 300, 50% glycerol. Long term: -20°C; Short term: +4°C. Avoid repeat freeze-thaw cycles.

**Precautions**

Anti-TBCC Antibody is for research use only and not for use in diagnostic or therapeutic procedures.

**Anti-TBCC Antibody - Protein Information****Name** TBCC**Function**

Tubulin-folding protein; involved in the final step of the tubulin folding pathway.

**Cellular Location**

Cytoplasm. Note=Detected predominantly in the photoreceptor connecting cilium

**Tissue Location**

Expressed in the retina. Expressed in the rod and cone photoreceptors, extending from the inner segments (IS), through the outer nuclear layer (ONL) and into the synapses in the outer plexiform layer (OPL). Strongly expressed to the photoreceptor connecting cilium at the tips of the IS (at

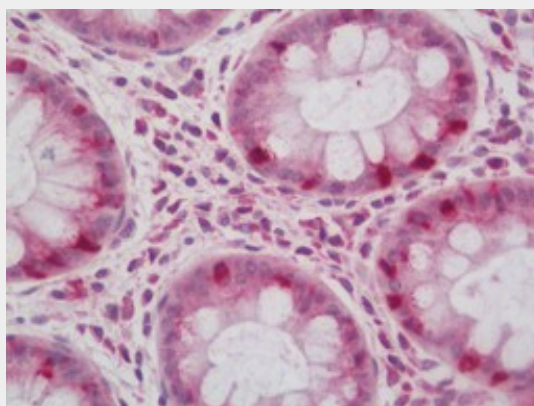
protein level)

### Anti-TBCC Antibody - Protocols

Provided below are standard protocols that you may find useful for product applications.

- [Western Blot](#)
- [Blocking Peptides](#)
- [Dot Blot](#)
- [Immunohistochemistry](#)
- [Immunofluorescence](#)
- [Immunoprecipitation](#)
- [Flow Cytometry](#)
- [Cell Culture](#)

### Anti-TBCC Antibody - Images



Human Colon: Formalin-Fixed, Paraffin-Embedded (FFPE)