

**Anti-TMED9 Antibody**  
**Rabbit Anti Human Polyclonal Antibody**  
**Catalog # ALS17271****Specification**

---

**Anti-TMED9 Antibody - Product Information**

Application	IHC-P
Primary Accession	<a href="#">Q9BVK6</a>
Predicted	Human
Host	Rabbit
Clonality	Polyclonal
Isotype	IgG
Calculated MW	27277

**Anti-TMED9 Antibody - Additional Information****Gene ID** 54732**Alias Symbol** **TMED9****Other Names**

TMED9, gp25L2 protein, Glycoprotein 25L2, gp25L2, HSGP25L2G, p24 family protein alpha-2, p24alpha2, p25, GMP25

**Target/Specificity**

Human TMED9

**Reconstitution & Storage**

PBS, pH 7.4, 0.03% Proclin 300, 50% glycerol. Long term: -20°C; Short term: +4°C. Avoid repeat freeze-thaw cycles.

**Precautions**

Anti-TMED9 Antibody is for research use only and not for use in diagnostic or therapeutic procedures.

**Anti-TMED9 Antibody - Protein Information****Name** TMED9**Synonyms** GP25L2**Function**

Appears to be involved in vesicular protein trafficking, mainly in the early secretory pathway. In COPI vesicle-mediated retrograde transport involved in the coatomer recruitment to membranes of the early secretory pathway. Increases coatomer-dependent activity of ARFGAP2. Thought to play a crucial role in the specific retention of p24 complexes in cis-Golgi membranes; specifically contributes to the coupled localization of TMED2 and TMED10 in the cis-Golgi network. May be involved in organization of intracellular membranes, such as of the ER-Golgi intermediate compartment and the Golgi apparatus. Involved in ER localization of PTPN2 isoform PTPB.

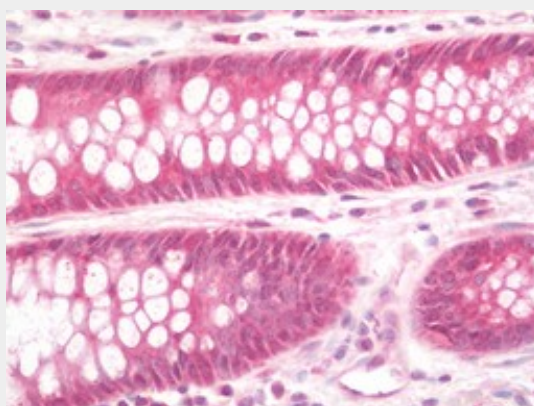
**Cellular Location**

Endoplasmic reticulum membrane; Single-pass type I membrane protein. Golgi apparatus, cis-Golgi network membrane; Single-pass type I membrane protein. Endoplasmic reticulum-Golgi intermediate compartment membrane; Single-pass type I membrane protein Golgi apparatus, trans-Golgi network membrane; Single-pass type I membrane protein. Note=Cycles between compartments of the early secretatory pathway

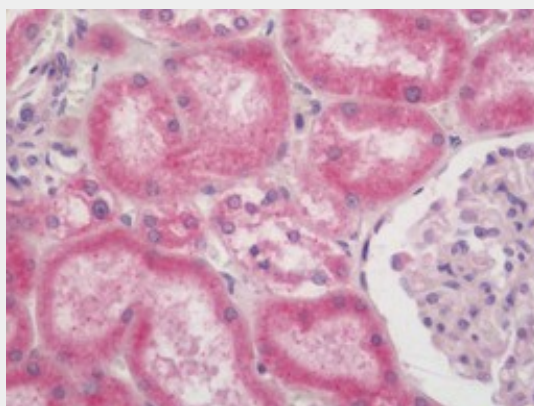
**Anti-TMED9 Antibody - Protocols**

Provided below are standard protocols that you may find useful for product applications.

- [Western Blot](#)
- [Blocking Peptides](#)
- [Dot Blot](#)
- [Immunohistochemistry](#)
- [Immunofluorescence](#)
- [Immunoprecipitation](#)
- [Flow Cytometry](#)
- [Cell Culture](#)

**Anti-TMED9 Antibody - Images**

Human Colon: Formalin-Fixed, Paraffin-Embedded (FFPE)



Human Kidney: Formalin-Fixed, Paraffin-Embedded (FFPE)