

Anti-IL18 Antibody
Rabbit Anti Human Polyclonal Antibody
Catalog # ALS17279**Specification**

Anti-IL18 Antibody - Product Information

Application	IHC-P
Primary Accession	Q14116
Predicted	Human
Host	Rabbit
Clonality	Polyclonal
Isotype	IgG
Calculated MW	22326

Anti-IL18 Antibody - Additional Information**Gene ID** 3606**Alias Symbol** **IL18****Other Names**

IL18, IGIF, IL-1g, Interleukin-18, IFN-gamma-inducing factor, IL-1 gamma, IL-18, Iboctadekin, IL1F4, Interleukin-1 gamma

Target/Specificity

Human Interleukin 18

Reconstitution & Storage

PBS, pH 7.4, 0.03% Proclin 300, 50% glycerol. Long term: -20°C; Short term: +4°C. Avoid repeat freeze-thaw cycles.

Precautions

Anti-IL18 Antibody is for research use only and not for use in diagnostic or therapeutic procedures.

Anti-IL18 Antibody - Protein Information**Name** IL18 ([HGNC:5986](#))**Synonyms** IGIF, IL1F4**Function**

Pro-inflammatory cytokine primarily involved in epithelial barrier repair, polarized T-helper 1 (Th1) cell and natural killer (NK) cell immune responses (PubMed:[10653850](http://www.uniprot.org/citations/10653850)). Upon binding to IL18R1 and IL18RAP, forms a signaling ternary complex which activates NF-kappa-B, triggering synthesis of inflammatory mediators (PubMed:[14528293](http://www.uniprot.org/citations/14528293), PubMed:[25500532](http://www.uniprot.org/citations/25500532), PubMed:[37993714](http://www.uniprot.org/citations/37993714)). Synergizes

with IL12/interleukin-12 to induce IFNG synthesis from T-helper 1 (Th1) cells and natural killer (NK) cells (PubMed:10653850). Involved in transduction of inflammation downstream of pyroptosis: its mature form is specifically released in the extracellular milieu by passing through the gasdermin-D (GSDMD) pore (PubMed:33883744).

Cellular Location

Cytoplasm, cytosol. Secreted. Note=The precursor is cytosolic (PubMed:33883744). In response to inflammasome-activating signals, cleaved and secreted (PubMed:33883744, PubMed:37993712, PubMed:37993714). Mature form is secreted and released in the extracellular milieu by passing through the gasdermin-D (GSDMD) pore (PubMed:33883744, PubMed:37993714). In contrast, the precursor form is not released, due to the presence of an acidic region that is proteolytically removed by CASP1, CASP4 or CASP5 during maturation (PubMed:33883744, PubMed:37993714). The secretion is dependent on protein unfolding and facilitated by the cargo receptor TMED10 (PubMed:32272059).

Tissue Location

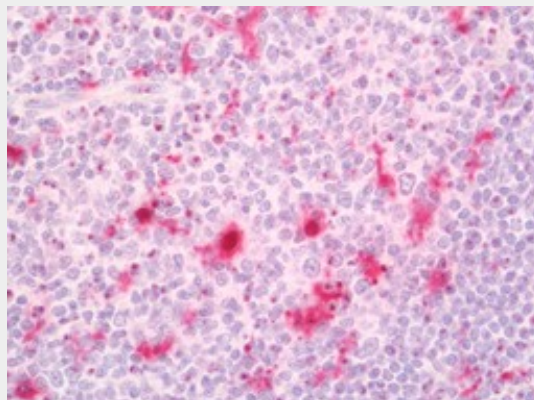
[Isoform 2]: Expressed in ovarian carcinoma but undetectable in normal ovarian epithelial cells. Resistant to proteolytic activation by caspase-1 and -4

Anti-IL18 Antibody - Protocols

Provided below are standard protocols that you may find useful for product applications.

- [Western Blot](#)
- [Blocking Peptides](#)
- [Dot Blot](#)
- [Immunohistochemistry](#)
- [Immunofluorescence](#)
- [Immunoprecipitation](#)
- [Flow Cytometry](#)
- [Cell Culture](#)

Anti-IL18 Antibody - Images



Human Tonsil: Formalin-Fixed, Paraffin-Embedded (FFPE)