

Anti-Complement C3 Antibody
Rabbit Anti Human Polyclonal Antibody
Catalog # ALS17285**Specification**

Anti-Complement C3 Antibody - Product Information

Application	IHC-P
Primary Accession	P01024
Predicted	Human
Host	Rabbit
Clonality	Polyclonal
Isotype	IgG
Calculated MW	187148

Anti-Complement C3 Antibody - Additional Information**Gene ID 718**Alias Symbol **C3****Other Names**

C3, AHUS5, ARMD9, Complement component C3, CPAMD1, Complement C3, ASP, Complement component 3

Target/Specificity

Human Complement C3

Reconstitution & Storage

PBS, pH 7.4, 0.03% Proclin 300, 50% glycerol. Long term: -20°C; Short term: +4°C. Avoid repeat freeze-thaw cycles.

Precautions

Anti-Complement C3 Antibody is for research use only and not for use in diagnostic or therapeutic procedures.

Anti-Complement C3 Antibody - Protein Information**Name C3****Synonyms CPAMD1****Function**

C3 plays a central role in the activation of the complement system. Its processing by C3 convertase is the central reaction in both classical and alternative complement pathways. After activation C3b can bind covalently, via its reactive thioester, to cell surface carbohydrates or immune aggregates. [C3-beta-c]: Acts as a chemoattractant for neutrophils in chronic inflammation.

Cellular Location

Secreted.

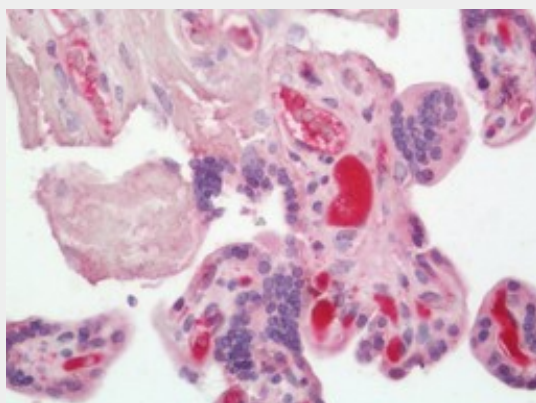
Tissue Location

Plasma. The acylation stimulating protein (ASP) is expressed in adipocytes and released into the plasma during both the fasting and postprandial periods.

Anti-Complement C3 Antibody - Protocols

Provided below are standard protocols that you may find useful for product applications.

- [Western Blot](#)
- [Blocking Peptides](#)
- [Dot Blot](#)
- [Immunohistochemistry](#)
- [Immunofluorescence](#)
- [Immunoprecipitation](#)
- [Flow Cytometry](#)
- [Cell Culture](#)

Anti-Complement C3 Antibody - Images

Human Placenta: Formalin-Fixed, Paraffin-Embedded (FFPE)