

**Anti-SLC36A2 Antibody**  
**Rabbit Anti Human Polyclonal Antibody**  
**Catalog # ALS17306****Specification**

---

**Anti-SLC36A2 Antibody - Product Information**

Application	IHC-P
Primary Accession	<a href="#">Q495M3</a>
Predicted	Human
Host	Rabbit
Clonality	Polyclonal
Isotype	IgG
Calculated MW	53216

**Anti-SLC36A2 Antibody - Additional Information****Gene ID** 153201**Alias Symbol** **SLC36A2****Other Names**

SLC36A2, PAT2, Tramdorin-1, TRAMD1, Tramdorin

**Target/Specificity**

SLC36A2 antibody is human specific. SLC36A2 is predicted to not cross-react with other members of the SLC36 protein family.

**Reconstitution & Storage**

PBS, 0.02% sodium azide. Store at 4°C for three months and -20°C, stable for up to one year. Avoid repeated freeze thaw cycles.

**Precautions**

Anti-SLC36A2 Antibody is for research use only and not for use in diagnostic or therapeutic procedures.

**Anti-SLC36A2 Antibody - Protein Information****Name** SLC36A2 ([HGNC:18762](#))**Function**

Electrogenic proton/amino acid symporter with a high selectivity for the small side chains amino acids glycine, alanine and proline, where both L- and D-enantiomers are transported. Extension of the backbone length, as in beta-alanine and 4-aminobutanoate or methylation of the amino group, as in sarcosine and N,N- dimethylglycine, are also tolerated but decrease transport efficiency. A free carboxyl group is preferred.

**Cellular Location**

Cell membrane; Multi-pass membrane protein. Endoplasmic reticulum membrane {ECO:0000250|UniProtKB:Q8BHK3}. Recycling endosome membrane

{ECO:0000250|UniProtKB:Q8BHK3}

#### **Tissue Location**

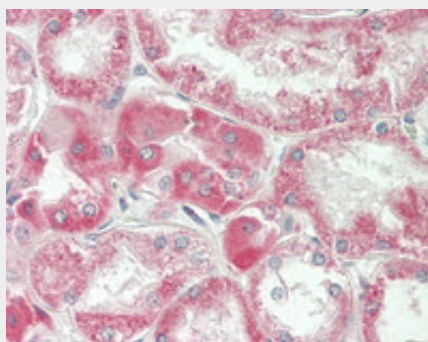
Abundantly expressed in kidney and muscle. Expressed in the S1 segment of the proximal tubule close to the glomerulus.

#### **Anti-SLC36A2 Antibody - Protocols**

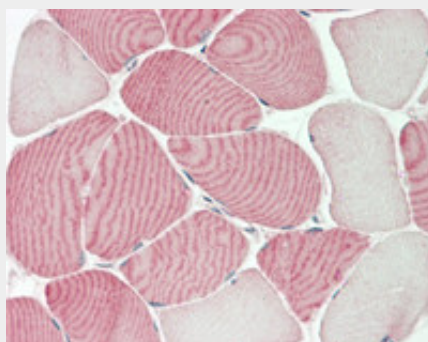
Provided below are standard protocols that you may find useful for product applications.

- [Western Blot](#)
- [Blocking Peptides](#)
- [Dot Blot](#)
- [Immunohistochemistry](#)
- [Immunofluorescence](#)
- [Immunoprecipitation](#)
- [Flow Cytometry](#)
- [Cell Culture](#)

#### **Anti-SLC36A2 Antibody - Images**



Human Kidney: Formalin-Fixed, Paraffin-Embedded (FFPE)



Human Skeletal Muscle: Formalin-Fixed, Paraffin-Embedded (FFPE)