

**Anti-DIS3L2 Antibody**  
**Rabbit Anti Human Polyclonal Antibody**  
**Catalog # ALS17307****Specification**

---

**Anti-DIS3L2 Antibody - Product Information**

Application	IHC-P
Primary Accession	<a href="#">Q8IYB7</a>
Predicted	Human, Mouse, Rat
Host	Rabbit
Clonality	Polyclonal
Isotype	IgG
Calculated MW	99279

**Anti-DIS3L2 Antibody - Additional Information****Gene ID** 129563**Alias Symbol** **DIS3L2****Other Names**

DIS3L2, DIS3-like exonuclease 2, PRLMNS, FAM6A

**Target/Specificity**

DIS3L2 antibody is human, mouse and rat reactive. At least three isoforms of DIS3L2 are known to exist; this antibody will only detect the longest isoform. DIS3L2 is predicted to not cross-react with DIS3 or DIS3L.

**Reconstitution & Storage**

PBS, 0.02% sodium azide. Store at 4°C for three months and -20°C, stable for up to one year. Avoid repeated freeze thaw cycles.

**Precautions**

Anti-DIS3L2 Antibody is for research use only and not for use in diagnostic or therapeutic procedures.

**Anti-DIS3L2 Antibody - Protein Information****Name** DIS3L2 {ECO:0000255|HAMAP-Rule:MF\_03045}**Synonyms** FAM6A**Function**

3'-5'-exoribonuclease that specifically recognizes RNAs polyuridylated at their 3' end and mediates their degradation. Component of an exosome-independent RNA degradation pathway that mediates degradation of both mRNAs and miRNAs that have been polyuridylated by a terminal uridylyltransferase, such as ZCCHC11/TUT4. Mediates degradation of cytoplasmic mRNAs that have been deadenylated and subsequently uridylated at their 3'. Mediates degradation of uridylated pre-let-7 miRNAs, contributing to the maintenance of embryonic stem (ES) cells.

Essential for correct mitosis, and negatively regulates cell proliferation.

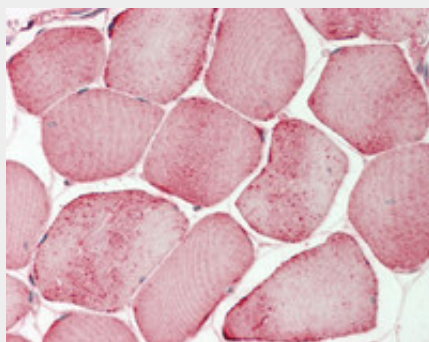
**Cellular Location**

Cytoplasm. Cytoplasm, P-body

**Anti-DIS3L2 Antibody - Protocols**

Provided below are standard protocols that you may find useful for product applications.

- [Western Blot](#)
- [Blocking Peptides](#)
- [Dot Blot](#)
- [Immunohistochemistry](#)
- [Immunofluorescence](#)
- [Immunoprecipitation](#)
- [Flow Cytometry](#)
- [Cell Culture](#)

**Anti-DIS3L2 Antibody - Images**

Human Skeletal Muscle: Formalin-Fixed, Paraffin-Embedded (FFPE)