

**Anti-SERPING1 / C1 Inhibitor Antibody (clone KT28)**  
**Mouse Anti Human Monoclonal Antibody**  
**Catalog # ALS17315****Specification**

---

**Anti-SERPING1 / C1 Inhibitor Antibody (clone KT28) - Product Information**

Application	IHC-P
Primary Accession	<a href="#">P05155</a>
Predicted	Human
Host	Mouse
Clonality	Monoclonal
Isotype	IgG1
Calculated MW	55154

**Anti-SERPING1 / C1 Inhibitor Antibody (clone KT28) - Additional Information****Gene ID 710**Alias Symbol **SERPING1****Other Names**

SERPING1, C1-inhibiting factor, C1IN, C1 Inh, C1-INH, C1INH, C1INH, C1 Inhibitor, HAE1, HAE2, Plasma protease C1 inhibitor, C1 esterase inhibitor, Serpin G1

**Target/Specificity**

Human SERPING1/C1INH/C1 Inhibitor

**Reconstitution & Storage**

PBS, 0.09% sodium azide Short term 4°C, long term aliquot and store at -20°C, avoid freeze thaw cycles.

**Precautions**

Anti-SERPING1 / C1 Inhibitor Antibody (clone KT28) is for research use only and not for use in diagnostic or therapeutic procedures.

**Anti-SERPING1 / C1 Inhibitor Antibody (clone KT28) - Protein Information****Name** SERPING1**Synonyms** C1IN, C1NH**Function**

Activation of the C1 complex is under control of the C1- inhibitor. It forms a proteolytically inactive stoichiometric complex with the C1r or C1s proteases. May play a potentially crucial role in regulating important physiological pathways including complement activation, blood coagulation, fibrinolysis and the generation of kinins. Very efficient inhibitor of FXIIa. Inhibits chymotrypsin and kallikrein.

**Cellular Location**

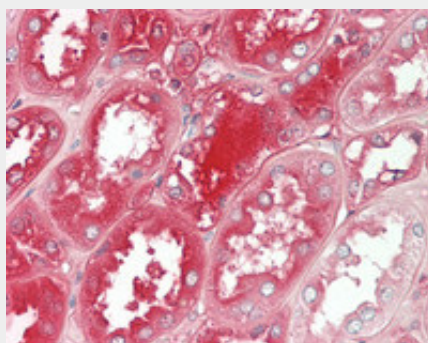
Secreted.

### **Anti-SERPING1 / C1 Inhibitor Antibody (clone KT28) - Protocols**

Provided below are standard protocols that you may find useful for product applications.

- [Western Blot](#)
- [Blocking Peptides](#)
- [Dot Blot](#)
- [Immunohistochemistry](#)
- [Immunofluorescence](#)
- [Immunoprecipitation](#)
- [Flow Cytometry](#)
- [Cell Culture](#)

### **Anti-SERPING1 / C1 Inhibitor Antibody (clone KT28) - Images**



Human Kidney: Formalin-Fixed, Paraffin-Embedded (FFPE)