

**Anti-APOA1 / Apolipoprotein A 1 Antibody**  
**Mouse Anti Human Monoclonal Antibody**  
**Catalog # ALS17317****Specification**

---

**Anti-APOA1 / Apolipoprotein A 1 Antibody - Product Information**

Application	IHC-P
Primary Accession	<a href="#">P02647</a>
Predicted	Human
Host	Mouse
Clonality	Monoclonal
Isotype	IgG2a
Calculated MW	30778

**Anti-APOA1 / Apolipoprotein A 1 Antibody - Additional Information****Gene ID** 335**Alias Symbol** **APOA1****Other Names**

APOA1, ApoA-I, APOAI, Apolipoprotein A-I, Apolipoprotein A1, Apo-AI

**Target/Specificity**

Specific for ApoA1, No cross reaction to Apo AII or Apo B

**Reconstitution & Storage**

15mM Potassium Phosphate, 0.85% Sodium Chloride, pH 7.5, 0.1% NaN3 Short term 4°C, long term aliquot and store at -20°C, avoid freeze thaw cycles.

**Precautions**

Anti-APOA1 / Apolipoprotein A 1 Antibody is for research use only and not for use in diagnostic or therapeutic procedures.

**Anti-APOA1 / Apolipoprotein A 1 Antibody - Protein Information****Name** APOA1 ([HGNC:600](#))**Function**

Participates in the reverse transport of cholesterol from tissues to the liver for excretion by promoting cholesterol efflux from tissues and by acting as a cofactor for the lecithin cholesterol acyltransferase (LCAT). As part of the SPAP complex, activates spermatozoa motility.

**Cellular Location**

Secreted.

**Tissue Location**

Major protein of plasma HDL, also found in chylomicrons. Synthesized in the liver and small intestine. The oxidized form at Met-110 and Met-136 is increased in individuals with increased risk

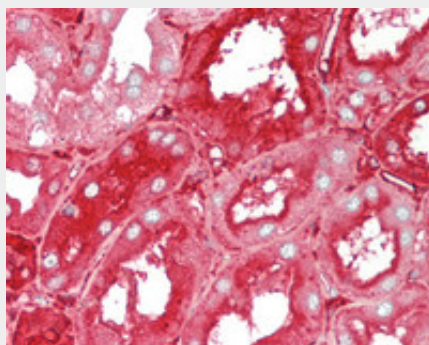
for coronary artery disease, such as in carrier of the eNOSa/b genotype and exposure to cigarette smoking. It is also present in increased levels in aortic lesions relative to native ApoA-I and increased levels are seen with increasing severity of disease

### **Anti-APOA1 / Apolipoprotein A 1 Antibody - Protocols**

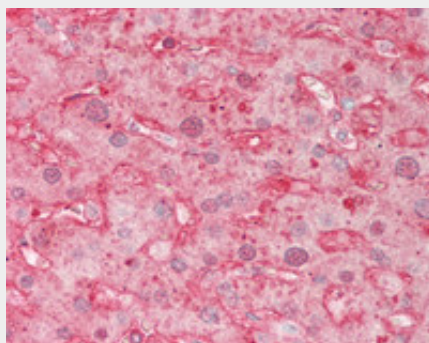
Provided below are standard protocols that you may find useful for product applications.

- [Western Blot](#)
- [Blocking Peptides](#)
- [Dot Blot](#)
- [Immunohistochemistry](#)
- [Immunofluorescence](#)
- [Immunoprecipitation](#)
- [Flow Cytometry](#)
- [Cell Culture](#)

### **Anti-APOA1 / Apolipoprotein A 1 Antibody - Images**



Human Kidney: Formalin-Fixed, Paraffin-Embedded (FFPE)



Human Liver: Formalin-Fixed, Paraffin-Embedded (FFPE)