

**Anti-FKSG80 / GPR81 Antibody (Cytoplasmic Domain)**  
**Rabbit Anti Human Polyclonal Antibody**  
**Catalog # ALS17319****Specification**

---

**Anti-FKSG80 / GPR81 Antibody (Cytoplasmic Domain) - Product Information**

Application	IHC-P
Primary Accession	<a href="#">Q9BXC0</a>
Predicted	Human, Monkey
Host	Rabbit
Clonality	Polyclonal
Calculated MW	39295

**Anti-FKSG80 / GPR81 Antibody (Cytoplasmic Domain) - Additional Information****Gene ID** 27198**Alias Symbol** **HCAR1****Other Names**

HCAR1, FKSG80, G protein-coupled receptor 81, G-protein coupled receptor 104, G protein-coupled receptor 104, G-protein coupled receptor 81, GPR81, GPR104, LACR1, HCA1, TA-GPCR, Lactate receptor 1

**Target/Specificity**

Human GPR81. BLAST analysis of the peptide immunogen showed no homology with other human proteins.

**Reconstitution & Storage**

PBS, less than 0.1% sodium azide. Aliquot and store undiluted at -20°C or below for up to 1 year. Can be stored undiluted at 4°C for up to 1 month. Avoid freeze thaw cycles.

**Precautions**

Anti-FKSG80 / GPR81 Antibody (Cytoplasmic Domain) is for research use only and not for use in diagnostic or therapeutic procedures.

**Anti-FKSG80 / GPR81 Antibody (Cytoplasmic Domain) - Protein Information****Name** HCAR1**Synonyms** GPR104, GPR81, HCA1**Function**

Acts as a receptor for L-lactate and mediates its anti- lipolytic effect through a G(i)-protein-mediated pathway.

**Cellular Location**

Cell membrane; Multi-pass membrane protein.

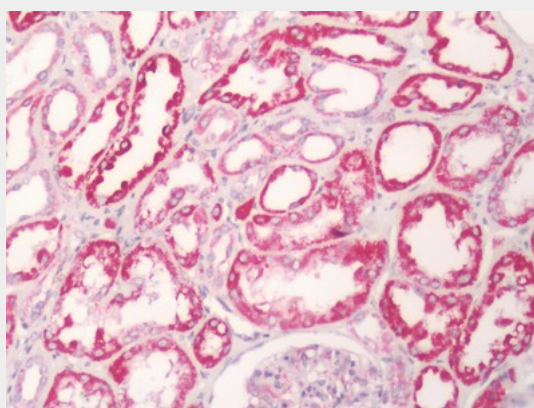
**Tissue Location**

Expressed abundantly in brown and white fat. It also detectable at lower levels in liver, kidney, skeletal muscle, brain and pituitary. Not detected in frontal, temporal and occipital lobes of the cortex, basal forebrain, caudate nucleus, nucleus accumbens and hippocampus.

**Anti-FKSG80 / GPR81 Antibody (Cytoplasmic Domain) - Protocols**

Provided below are standard protocols that you may find useful for product applications.

- [Western Blot](#)
- [Blocking Peptides](#)
- [Dot Blot](#)
- [Immunohistochemistry](#)
- [Immunofluorescence](#)
- [Immunoprecipitation](#)
- [Flow Cytometry](#)
- [Cell Culture](#)

**Anti-FKSG80 / GPR81 Antibody (Cytoplasmic Domain) - Images**

Human Kidney: Formalin-Fixed, Paraffin-Embedded (FFPE)