

**Anti-PTHR2 / PTH2R Antibody (N-Terminus)**  
**Rabbit Anti Human Polyclonal Antibody**  
**Catalog # ALS17320****Specification**

---

**Anti-PTHR2 / PTH2R Antibody (N-Terminus) - Product Information**

Application	IHC-P
Primary Accession	<a href="#">P49190</a>
Predicted	Human, Monkey, Bovine
Host	Rabbit
Clonality	Polyclonal
Calculated MW	62236

**Anti-PTHR2 / PTH2R Antibody (N-Terminus) - Additional Information****Gene ID** 5746**Alias Symbol** PTH2R**Other Names**

PTH2R, Parathyroid hormone 2 receptor, Parathyroid hormone receptor 2, PTH2 receptor, PTHR2, Hpth2 receptor

**Target/Specificity**

Human PTH2R / PTHR2. BLAST analysis of the peptide immunogen showed no homology with other human proteins.

**Reconstitution & Storage**

PBS, less than 0.1% sodium azide. Aliquot and store undiluted at -20°C or below for up to 1 year. Can be stored undiluted at 4°C for up to 1 month. Avoid freeze thaw cycles.

**Precautions**

Anti-PTHR2 / PTH2R Antibody (N-Terminus) is for research use only and not for use in diagnostic or therapeutic procedures.

**Anti-PTHR2 / PTH2R Antibody (N-Terminus) - Protein Information****Name** PTH2R**Synonyms** PTHR2**Function**

This is a specific receptor for parathyroid hormone. The activity of this receptor is mediated by G proteins which activate adenylyl cyclase. PTH2R may be responsible for PTH effects in a number of physiological systems. It may play a significant role in pancreatic function. PTH2R presence in neurons indicates that it may function as a neurotransmitter receptor (By similarity).

**Cellular Location**

Cell membrane; Multi-pass membrane protein.

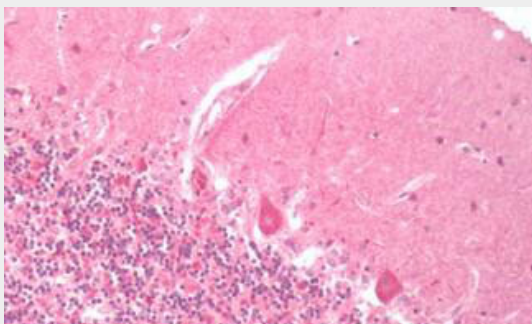
**Tissue Location**

Expressed abundantly in brain and pancreas. Also expressed in the testis.

**Anti-PTHR2 / PTH2R Antibody (N-Terminus) - Protocols**

Provided below are standard protocols that you may find useful for product applications.

- [Western Blot](#)
- [Blocking Peptides](#)
- [Dot Blot](#)
- [Immunohistochemistry](#)
- [Immunofluorescence](#)
- [Immunoprecipitation](#)
- [Flow Cytometry](#)
- [Cell Culture](#)

**Anti-PTHR2 / PTH2R Antibody (N-Terminus) - Images**

Human Brain, Cerebellum: Formalin-Fixed, Paraffin-Embedded (FFPE)