

MET/HGFR Antibody
Purified Mouse Monoclonal Antibody (Mab)
Catalog # AM1001a**Specification**

MET/HGFR Antibody - Product Information

Application	IF, WB, IHC-P,E
Primary Accession	P08581
Reactivity	Human, Mouse
Host	Mouse
Clonality	Monoclonal
Isotype	Mouse IgG1
Antigen Region	Unknown

MET/HGFR Antibody - Additional Information**Gene ID** 4233**Other Names**

Hepatocyte growth factor receptor, HGF receptor, HGF/SF receptor, Proto-oncogene c-Met, Scatter factor receptor, SF receptor, Tyrosine-protein kinase Met, MET

Target/Specificity

This monoclonal antibody is generated from mice immunized with purified recombinant protein encoding the catalytic domain of human Met.

Dilution

IF~~1:100

WB~~1:8000

IHC-P~~1:25

Format

Purified monoclonal antibody supplied in PBS with 0.09% (W/V) sodium azide. This antibody is purified through a protein G column, followed by dialysis against PBS.

Storage

Maintain refrigerated at 2-8°C for up to 2 weeks. For long term storage store at -20°C in small aliquots to prevent freeze-thaw cycles.

Precautions

MET/HGFR Antibody is for research use only and not for use in diagnostic or therapeutic procedures.

MET/HGFR Antibody - Protein Information**Name** MET**Function** Receptor tyrosine kinase that transduces signals from the extracellular matrix into the

cytoplasm by binding to hepatocyte growth factor/HGF ligand. Regulates many physiological processes including proliferation, scattering, morphogenesis and survival. Ligand binding at the cell surface induces autophosphorylation of MET on its intracellular domain that provides docking sites for downstream signaling molecules. Following activation by ligand, interacts with the PI3-kinase subunit PIK3R1, PLCG1, SRC, GRB2, STAT3 or the adapter GAB1. Recruitment of these downstream effectors by MET leads to the activation of several signaling cascades including the RAS-ERK, PI3 kinase-AKT, or PLCgamma-PKC. The RAS-ERK activation is associated with the morphogenetic effects while PI3K/AKT coordinates prosurvival effects. During embryonic development, MET signaling plays a role in gastrulation, development and migration of neuronal precursors, angiogenesis and kidney formation. During skeletal muscle development, it is crucial for the migration of muscle progenitor cells and for the proliferation of secondary myoblasts (By similarity). In adults, participates in wound healing as well as organ regeneration and tissue remodeling. Promotes also differentiation and proliferation of hematopoietic cells. May regulate cortical bone osteogenesis (By similarity).

Cellular Location

Membrane; Single-pass type I membrane protein.

Tissue Location

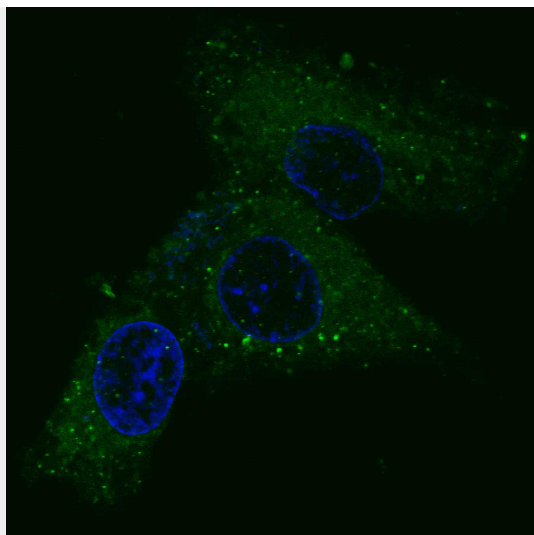
Expressed in normal hepatocytes as well as in epithelial cells lining the stomach, the small and the large intestine Found also in basal keratinocytes of esophagus and skin. High levels are found in liver, gastrointestinal tract, thyroid and kidney. Also present in the brain. Expressed in metaphyseal bone (at protein level) (PubMed:26637977).

MET/HGFR Antibody - Protocols

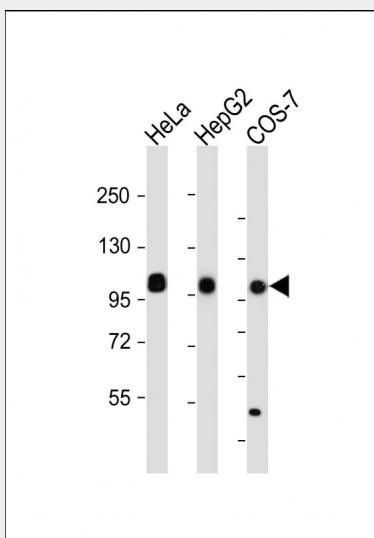
Provided below are standard protocols that you may find useful for product applications.

- [Western Blot](#)
- [Blocking Peptides](#)
- [Dot Blot](#)
- [Immunohistochemistry](#)
- [Immunofluorescence](#)
- [Immunoprecipitation](#)
- [Flow Cytometry](#)
- [Cell Culture](#)

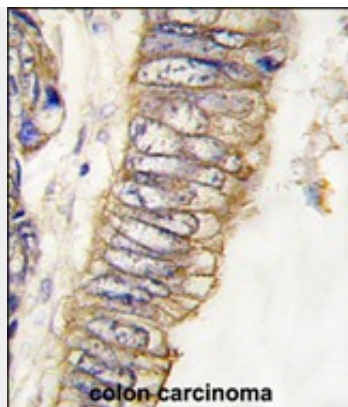
MET/HGFR Antibody - Images



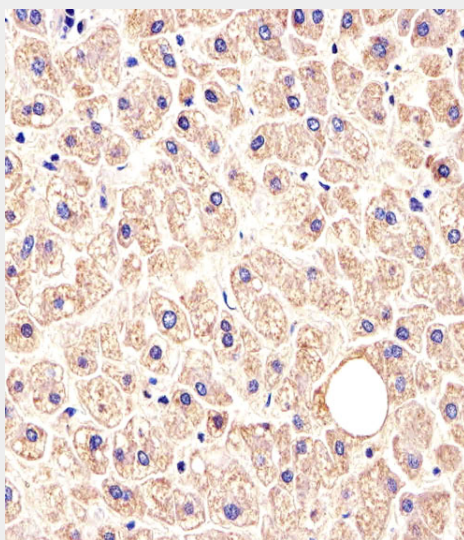
Fluorescent confocal image of HepG2 cells stained with MET/HGFR antibody. HepG2 cells were fixed with 4% PFA (20 min), permeabilized with Triton X-100 (0.2%, 30 min). Cells were then incubated with AM1001a MET/HGFR primary antibody (1:100, 2 h at room temperature). For secondary antibody, Alexa Fluor® 488 conjugated donkey anti-mouse antibody (green) was used (1:1000, 1h). Nuclei were counterstained with Hoechst 33342 (blue) (10 µg/ml, 5 min). Note the highly specific localization of the MET immunosignal to the cytoplasm, supported by Human Protein Atlas Data (<http://www.proteinatlas.org/ENSG00000105976>).



All lanes : Anti-MET/HGFR Antibody at dilution Lane 1: HeLa whole cell lysate Lane 2: HepG2 whole cell lysate Lane 3: COS-7 whole cell lysate Lysates/proteins at 20 µg per lane. Secondary Goat Anti-mouse IgG, (H+L), Peroxidase conjugated at 1/10000 dilution. Predicted band size : 156 kDa Blocking/Dilution buffer: 5% NFDM/TBST.



Formalin-fixed and paraffin-embedded human colon carcinoma tissue reacted with MET/HGFR Antibody (Cat.#AM1001a), which was peroxidase-conjugated to the secondary antibody, followed by DAB staining. This data demonstrates the use of this antibody for immunohistochemistry; clinical relevance has not been evaluated.



Immunohistochemical analysis of paraffin-embedded H.liver section using MET/HGFR Antibody(Cat#AM1001a). AM1001a was diluted at 1:25 dilution. A peroxidase-conjugated goat anti-mouse IgG at 1:400 dilution was used as the secondary antibody, followed by DAB staining.

MET/HGFR Antibody - Background

The proto-oncogene MET product is the hepatocyte growth factor receptor and encodes tyrosine-kinase activity. The primary single chain precursor protein is post-translationally cleaved to produce the alpha and beta subunits, which are disulfide linked to form the mature receptor. Various mutations in the MET gene are associated with papillary renal carcinoma. Two transcript variants encoding different isoforms have been found for this gene.

MET/HGFR Antibody - References

References for protein:

- 1.MET receptor sequence variants R970C and T992I lack transforming capacity. Tyner JW, et al. Cancer Res, 2010 Aug 1. PMID 20670955.
- 2.Further evidence for the role of MET in autism susceptibility. Thanseem I, et al. Neurosci Res, 2010 Oct. PMID 20615438.
- 3.Increased HGF and c-Met in muscle tissues of polymyositis and dermatomyositis patients: beneficial roles of HGF in muscle regeneration. Sugiura T, et al. Clin Immunol, 2010 Sep. PMID

20580899.

4. Correlation between hepatocyte growth factor receptor and vascular endothelial growth factor-A in breast carcinoma. Gisterek I, et al. Folia Histochem Cytobiol, 2010 Jan 1. PMID 20529820.

5. MET overexpressing chordomas frequently exhibit polysomy of chromosome 7 but no MET activation through sarcoma-specific gene fusions. Grabellus F, et al. Tumour Biol, 2010 Jun. PMID 20512480.

References for HepG2 cell line:

1. Knowles BB, et al. (1980). Human hepatocellular carcinoma cell lines secrete the major plasma proteins and hepatitis B surface antigen. Science 209: 497-499. [PubMed: 6248960].

2. Darlington GJ, et al. (1987). Growth and hepatospecific gene expression of human hepatoma cells in a defined medium. In Vitro Cell. Dev. Biol. 23: 349-354. [PubMed: 3034851].

3. Ihrke, G; Neufeld, EB; Meads, T; Shanks, MR; Cassio, D; Laurent, M; Schroer, TA; Pagano, RE et al. (1993). "WIF-B cells: an in vitro model for studies of hepatocyte polarity". Journal of Cell Biology 123 (6): 1761-1775. [PubMed: 7506266].

4. Mersch-Sundermann, V.; Knasmüller, S.; Wu, X. J.; Darroudi, F.; Kassie, F. (2004). "Use of a human-derived liver cell line for the detection of cytoprotective, antigenotoxic and cogenotoxic agents". Toxicology 198 (1-3): 329-340. [PubMed: 15138059].