

NLRP12 Antibody
Mouse Monoclonal Antibody (Mab)
Catalog # AM1894b**Specification**

NLRP12 Antibody - Product Information

Application	WB,E
Primary Accession	P59046
Other Accession	NP_150639.1 , NP_653288.1
Reactivity	Mouse
Host	Mouse
Clonality	Monoclonal
Isotype	IgM,K
Calculated MW	120173

NLRP12 Antibody - Additional Information**Gene ID** 91662**Other Names**

NACHT, LRR and PYD domains-containing protein 12, Monarch-1, PYRIN-containing APAF1-like protein 7, Regulated by nitric oxide, NLRP12, NALP12, PYPAF7, RNO

Target/Specificity

This NLRP12 monoclonal antibody is generated from mouse immunized with NLRP12 recombinant protein.

Dilution

WB~~1:500~1500

Format

Purified polyclonal antibody supplied in PBS with 0.09% (W/V) sodium azide. This antibody is prepared by Saturated Ammonium Sulfate (SAS) precipitation followed by dialysis against PBS.

Storage

Maintain refrigerated at 2-8°C for up to 2 weeks. For long term storage store at -20°C in small aliquots to prevent freeze-thaw cycles.

Precautions

NLRP12 Antibody is for research use only and not for use in diagnostic or therapeutic procedures.

NLRP12 Antibody - Protein Information**Name** NLRP12**Synonyms** NALP12, PYPAF7, RNO**Function** Plays an essential role as an potent mitigator of inflammation (PubMed:[30559449](#)).

Primarily expressed in dendritic cells and macrophages, inhibits both canonical and non-canonical NF-kappa-B and ERK activation pathways (PubMed:[15489334](#), PubMed:[17947705](#)). Functions as a negative regulator of NOD2 by targeting it to degradation via the proteasome pathway (PubMed:[30559449](#)). In turn, promotes bacterial tolerance (PubMed:[30559449](#)). Inhibits also the RIGI- mediated immune signaling against RNA viruses by reducing the E3 ubiquitin ligase TRIM25-mediated 'Lys-63'-linked RIGI activation but enhancing the E3 ubiquitin ligase RNF125-mediated 'Lys-48'-linked RIGI degradation (PubMed:[30902577](#)). Acts also as a negative regulator of inflammatory response to mitigate obesity and obesity-associated diseases in adipose tissue (By similarity).

Cellular Location

Cytoplasm.

Tissue Location

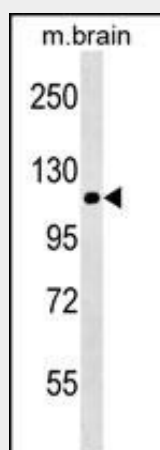
Detected only in peripheral blood leukocytes, predominantly in eosinophils and granulocytes, and at lower levels in monocytes.

NLRP12 Antibody - Protocols

Provided below are standard protocols that you may find useful for product applications.

- [Western Blot](#)
- [Blocking Peptides](#)
- [Dot Blot](#)
- [Immunohistochemistry](#)
- [Immunofluorescence](#)
- [Immunoprecipitation](#)
- [Flow Cytometry](#)
- [Cell Culture](#)

NLRP12 Antibody - Images



NLRP12/MB10187 antibody (Cat. #AM1894b) western blot analysis in mouse brain tissue lysates (35µg/lane). This demonstrates the NLRP12/MB10187 antibody detected the NLRP12/MB10187 protein (arrow).

NLRP12 Antibody - Background

This gene encodes a member of the CATERPILLER family of cytoplasmic proteins. The encoded protein, which contains an N-terminal pyrin domain, a NACHT domain, a NACHT-associated domain,

and a C-terminus leucine-rich repeat region, functions as an attenuating factor of inflammation by suppressing inflammatory responses in activated monocytes. Alternatively spliced transcript variants encoding distinct isoforms have been described but the full-length nature of some of these has not been determined.

NLRP12 Antibody - References

Bailey, S.D., et al. Diabetes Care (2010) In press : Cummings, J.R., et al. Tissue Antigens 76(1):48-56(2010) Talmud, P.J., et al. Am. J. Hum. Genet. 85(5):628-642(2009) Fahy, R.J., et al. Am. J. Respir. Crit. Care Med. 177(9):983-988(2008) Jeru, I., et al. Proc. Natl. Acad. Sci. U.S.A. 105(5):1614-1619(2008)