

STC2 Antibody
Mouse Monoclonal Antibody (Mab)
Catalog # AM1955b**Specification**

STC2 Antibody - Product Information

Application	WB,E
Primary Accession	O76061
Other Accession	NP_003705.1
Reactivity	Human
Host	Mouse
Clonality	Monoclonal
Isotype	IgA,k
Calculated MW	33249

STC2 Antibody - Additional Information**Gene ID** 8614**Other Names**

Stanniocalcin-2, STC-2, Stanniocalcin-related protein, STC-related protein, STCRP, STC2

Target/Specificity

This STC2 monoclonal antibody is generated from mouse immunized with STC2 recombinant protein.

Dilution

WB~~1:500~1000

Format

Purified polyclonal antibody supplied in PBS with 0.09% (W/V) sodium azide. This antibody is prepared by Saturated Ammonium Sulfate (SAS) precipitation followed by dialysis against PBS.

Storage

Maintain refrigerated at 2-8°C for up to 2 weeks. For long term storage store at -20°C in small aliquots to prevent freeze-thaw cycles.

Precautions

STC2 Antibody is for research use only and not for use in diagnostic or therapeutic procedures.

STC2 Antibody - Protein Information**Name** STC2**Function** Has an anti-hypocalcemic action on calcium and phosphate homeostasis.**Cellular Location**

Secreted.

Tissue Location

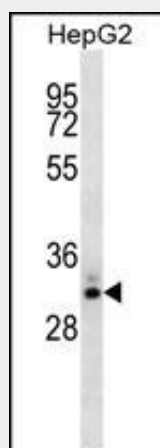
Expressed in a variety of tissues including muscle, heart, pancreas, kidney, spleen, prostate, small intestine, colon and peripheral blood leukocytes

STC2 Antibody - Protocols

Provided below are standard protocols that you may find useful for product applications.

- [Western Blot](#)
- [Blocking Peptides](#)
- [Dot Blot](#)
- [Immunohistochemistry](#)
- [Immunofluorescence](#)
- [Immunoprecipitation](#)
- [Flow Cytometry](#)
- [Cell Culture](#)

STC2 Antibody - Images



STC2 Antibody (Cat. #AM1955b) western blot analysis in HepG2 cell line lysates (35µg/lane). This demonstrates the STC2 antibody detected the STC2 protein (arrow).

STC2 Antibody - Background

This gene encodes a secreted, homodimeric glycoprotein that is expressed in a wide variety of tissues and may have autocrine or paracrine functions. The encoded protein has 10 of its 15 cysteine residues conserved among stanniocalcin family members and is phosphorylated by casein kinase 2 exclusively on its serine residues. Its C-terminus contains a cluster of histidine residues which may interact with metal ions. The protein may play a role in the regulation of renal and intestinal calcium and phosphate transport, cell metabolism, or cellular calcium/phosphate homeostasis. Constitutive overexpression of human stanniocalcin 2 in mice resulted in pre- and postnatal growth restriction, reduced bone and skeletal muscle growth, and organomegaly. Expression of this gene is induced by estrogen and altered in some breast cancers.

STC2 Antibody - References

Yokoyama, K., et al. Nephron Clin Pract 115 (4), C237-C243 (2010) :
Law, A.Y., et al. Exp. Cell Res. 316(3):466-476(2010)
Volland, S., et al. Int. J. Cancer 125(9):2049-2057(2009)
Ieta, K., et al. Int. J. Cancer 125(4):926-931(2009)
Tamura, K., et al. Cancer Sci. 100(5):914-919(2009)