

APOA1 Antibody (N-term)
Mouse Monoclonal Antibody (Mab)
Catalog # AM2045b**Specification**

APOA1 Antibody (N-term) - Product Information

Application	WB,E
Primary Accession	P02647
Other Accession	NP_000030.1
Reactivity	Human, Mouse
Host	Mouse
Clonality	Monoclonal
Isotype	IgG1
Antigen Region	10-37

APOA1 Antibody (N-term) - Additional Information**Gene ID** 335**Other Names**

Apolipoprotein A-I, Apo-AI, ApoA-I, Apolipoprotein A1, Proapolipoprotein A-I, ProapoA-I, Truncated apolipoprotein A-I, Apolipoprotein A-I(1-242), APOA1

Target/Specificity

This APOA1 antibody is generated from mice immunized with a KLH conjugated synthetic peptide between 10-37 amino acids from the N-terminal region of human APOA1.

Dilution

WB~~1:500~1000

Format

Purified monoclonal antibody supplied in PBS with 0.09% (W/V) sodium azide. This antibody is purified through a protein G column, followed by dialysis against PBS.

Storage

Maintain refrigerated at 2-8°C for up to 2 weeks. For long term storage store at -20°C in small aliquots to prevent freeze-thaw cycles.

Precautions

APOA1 Antibody (N-term) is for research use only and not for use in diagnostic or therapeutic procedures.

APOA1 Antibody (N-term) - Protein Information**Name** APOA1 ([HGNC:600](#))

Function Participates in the reverse transport of cholesterol from tissues to the liver for excretion by promoting cholesterol efflux from tissues and by acting as a cofactor for the lecithin cholesterol

acyltransferase (LCAT). As part of the SPAP complex, activates spermatozoa motility.

Cellular Location

Secreted.

Tissue Location

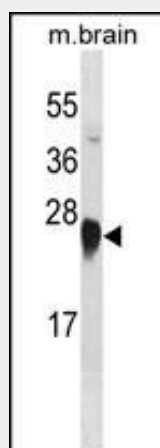
Major protein of plasma HDL, also found in chylomicrons. Synthesized in the liver and small intestine. The oxidized form at Met-110 and Met-136 is increased in individuals with increased risk for coronary artery disease, such as in carrier of the eNOSa/b genotype and exposure to cigarette smoking. It is also present in increased levels in aortic lesions relative to native ApoA-I and increased levels are seen with increasing severity of disease

APOA1 Antibody (N-term) - Protocols

Provided below are standard protocols that you may find useful for product applications.

- [Western Blot](#)
- [Blocking Peptides](#)
- [Dot Blot](#)
- [Immunohistochemistry](#)
- [Immunofluorescence](#)
- [Immunoprecipitation](#)
- [Flow Cytometry](#)
- [Cell Culture](#)

APOA1 Antibody (N-term) - Images



APOA1 Antibody (N-term) (Cat. #AM2045b) western blot analysis in mouse brain tissue lysates (35µg/lane). This demonstrates the APOA1 antibody detected the APOA1 protein (arrow).

APOA1 Antibody (N-term) - Background

This gene encodes apolipoprotein A-I, which is the major protein component of high density lipoprotein (HDL) in plasma. The protein promotes cholesterol efflux from tissues to the liver for excretion, and it is a cofactor for lecithin cholesterolacyltransferase (LCAT) which is responsible for the formation of most plasma cholesteryl esters. This gene is closely linked with two other apolipoprotein genes on chromosome 11. Defects in this gene are associated with HDL deficiencies,

including Tangier disease, and with systemic non-neuropathic amyloidosis.

APOA1 Antibody (N-term) - References

Clemente-Postigo, M., et al. Clin. Biochem. 43 (16-17), 1300-1304 (2010) :
Romero, R., et al. Am. J. Obstet. Gynecol. 203 (4), 361 (2010) :
Dawar, R., et al. Am. J. Clin. Pathol. 134(2):249-255(2010)
Mattei, J., et al. Nutr Metab Cardiovasc Dis (2010) In press :
Bencharif, K., et al. Lipids Health Dis 9, 75 (2010) :