

CST3 Antibody
Mouse Monoclonal Antibody (Mab)
Catalog # AM2096a**Specification**

CST3 Antibody - Product Information

Application	WB,E
Primary Accession	P01034
Other Accession	NP_000090.1
Reactivity	Human
Host	Mouse
Clonality	Monoclonal
Isotype	IgG1
Calculated MW	15799
Antigen Region	95-122

CST3 Antibody - Additional Information**Gene ID** 1471**Other Names**

Cystatin-C, Cystatin-3, Gamma-trace, Neuroendocrine basic polypeptide, Post-gamma-globulin, CST3

Target/Specificity

This CST3 antibody is generated from mice immunized with a KLH conjugated synthetic peptide between 95-122 amino acids from human CST3.

Dilution

WB~~1:500~1000

Format

Mouse monoclonal antibody supplied in crude ascites with 0.09% (W/V) sodium azide.

Storage

Maintain refrigerated at 2-8°C for up to 2 weeks. For long term storage store at -20°C in small aliquots to prevent freeze-thaw cycles.

Precautions

CST3 Antibody is for research use only and not for use in diagnostic or therapeutic procedures.

CST3 Antibody - Protein Information**Name** CST3**Function** As an inhibitor of cysteine proteinases, this protein is thought to serve an important physiological role as a local regulator of this enzyme activity.

Cellular Location

Secreted.

Tissue Location

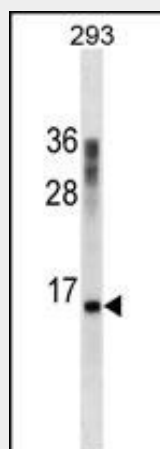
Expressed in submandibular and sublingual saliva but not in parotid saliva (at protein level).
Expressed in various body fluids, such as the cerebrospinal fluid and plasma. Expressed in highest levels in the epididymis, vas deferens, brain, thymus, and ovary and the lowest in the submandibular gland

CST3 Antibody - Protocols

Provided below are standard protocols that you may find useful for product applications.

- [Western Blot](#)
- [Blocking Peptides](#)
- [Dot Blot](#)
- [Immunohistochemistry](#)
- [Immunofluorescence](#)
- [Immunoprecipitation](#)
- [Flow Cytometry](#)
- [Cell Culture](#)

CST3 Antibody - Images



CST3 Antibody (Cat. #AM2096a) western blot analysis in 293 cell line lysates (35µg/lane). This demonstrates the CST3 antibody detected the CST3 protein (arrow).

CST3 Antibody - Background

The cystatin superfamily encompasses proteins that contain multiple cystatin-like sequences. Some of the members are active cysteine protease inhibitors, while others have lost or perhaps never acquired this inhibitory activity. There are three inhibitory families in the superfamily, including the type 1 cystatins (stefins), type 2 cystatins and the kininogens. The type 2 cystatin proteins are a class of cysteine proteinase inhibitors found in a variety of human fluids and secretions, where they appear to provide protective functions. The cystatin locus on chromosome 20 contains the majority of the type 2 cystatin genes and pseudogenes. This gene is located in the cystatin locus and encodes the most

abundant extracellular inhibitor of cysteine proteases, which is found in high concentrations in biological fluids and is expressed in virtually all organs of the body. A mutation in this gene has been associated with amyloid angiopathy. Expression of this protein in vascular wall smooth muscle cells is severely reduced in both atherosclerotic and aneurysmal aortic lesions, establishing its role in vascular disease.

CST3 Antibody - References

Kiyosue, A., et al. Circ. J. 74(11):2441-2447(2010)
Corneveaux, J.J., et al. Hum. Mol. Genet. 19(16):3295-3301(2010)
Ma, Y., et al. Biomarkers 15(5):410-417(2010)
Sloan, C.D., et al. Am. J. Med. Genet. B Neuropsychiatr. Genet. 153B (5), 1060-1069 (2010) :
Thilaganathan, B., et al. Obstet Gynecol 115(6):1233-1238(2010)